

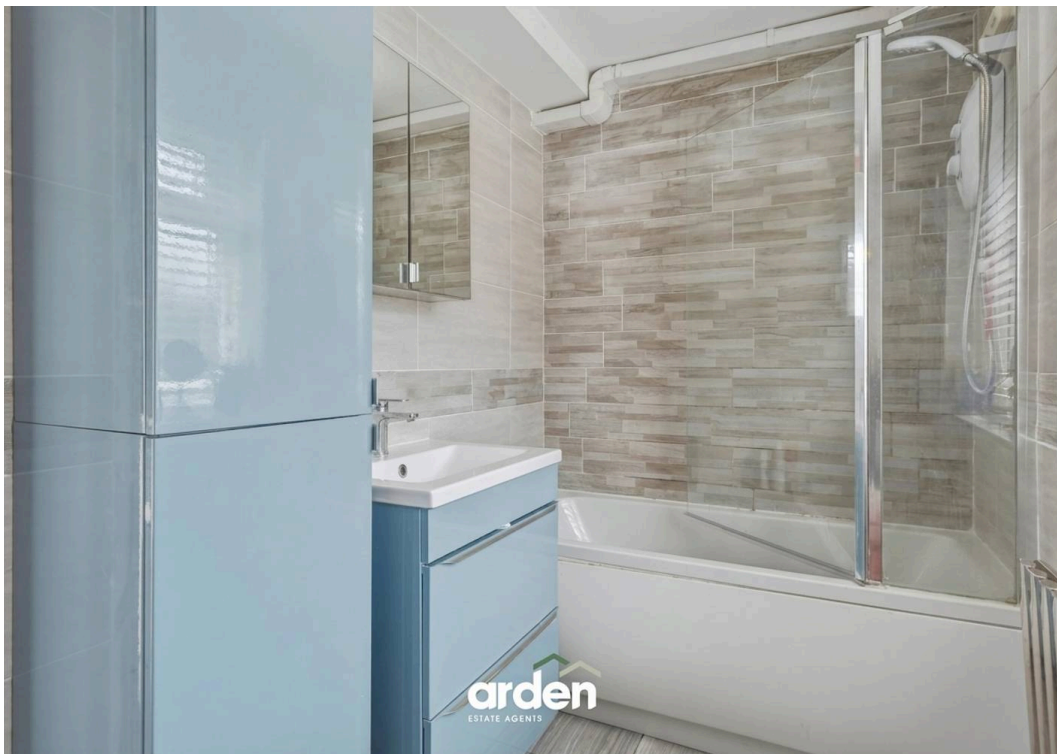
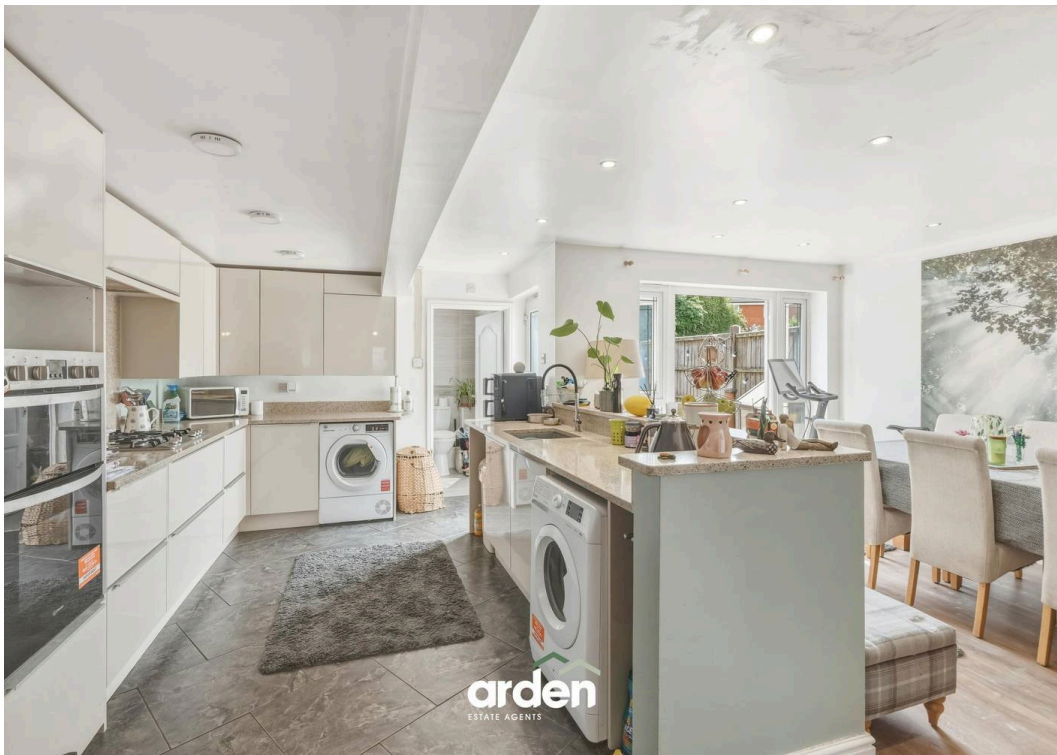


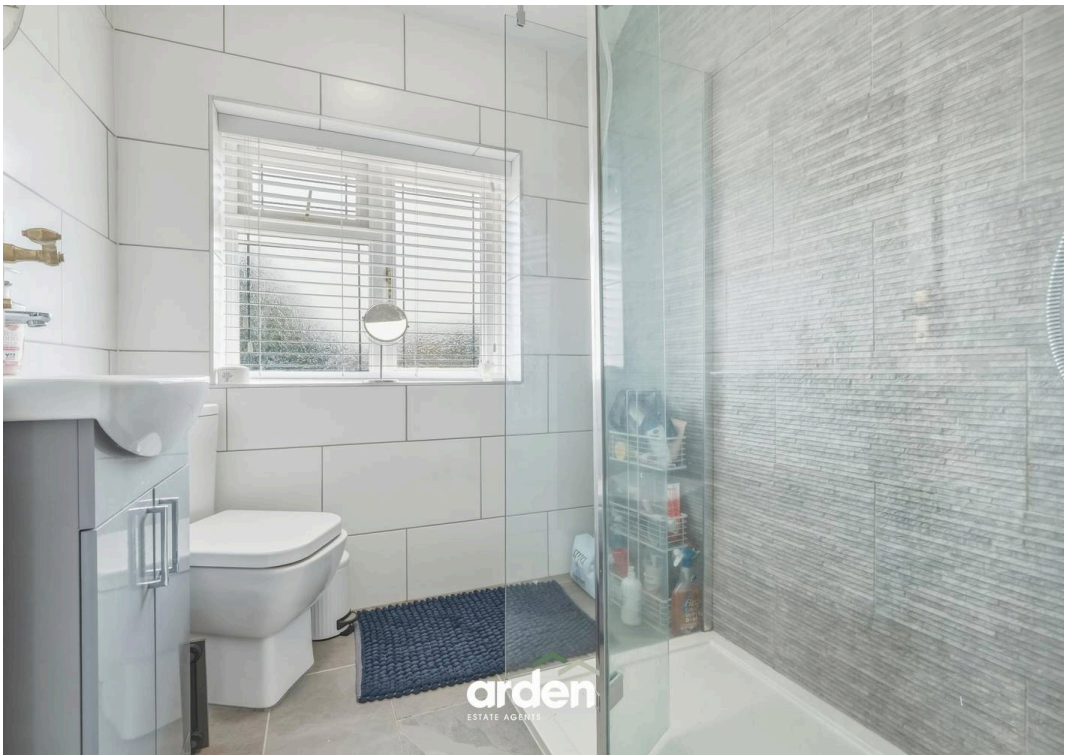
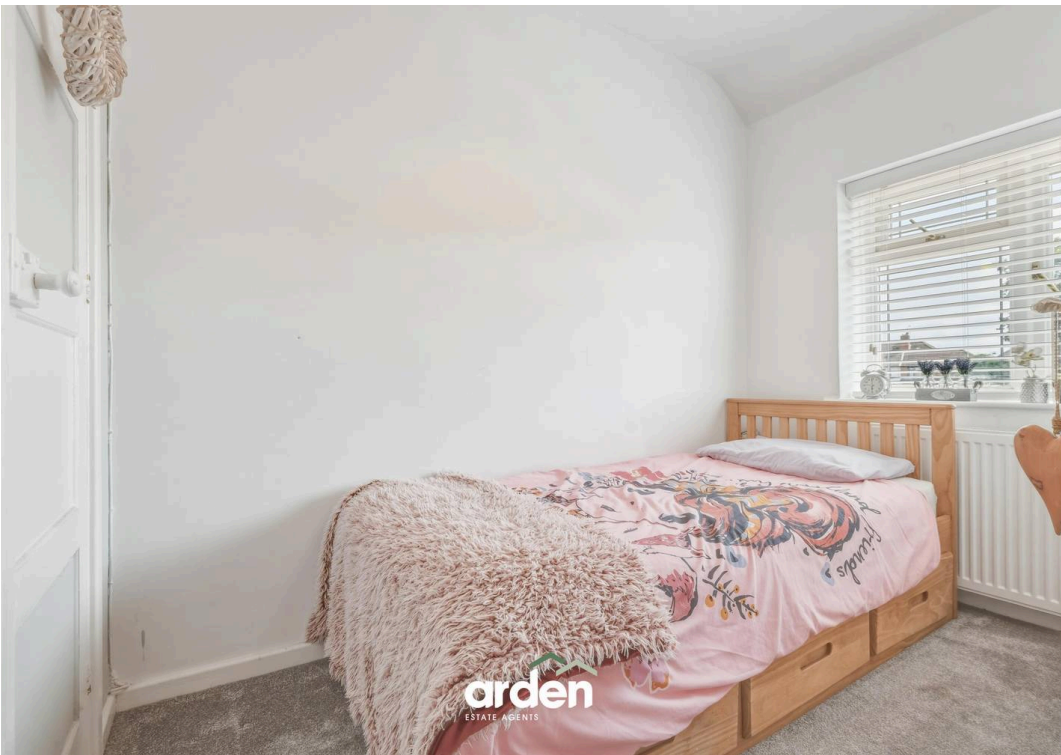
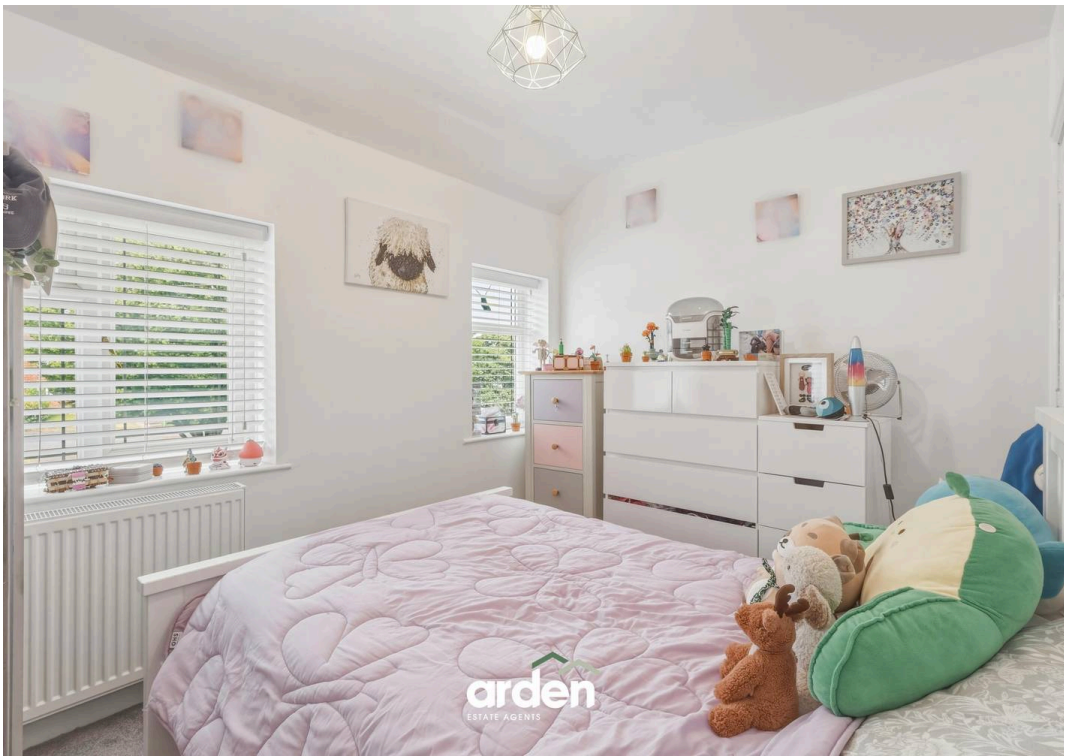
21 Maple Road, Rednal, B45 9EB

Arden Estates Rubery, 14 Old Birmingham Road, Lickey End - B60 1DE

0121 453 4349 • rubery@ardenestates.co.uk •







Introducing this beautifully presented four-bedroom terraced home, situated in Rednal, Birmingham. Offering a spacious open-plan kitchen, dining and family room, a separate second reception room, two bathrooms, off-road parking, and a private rear garden. The property is approached via a driveway providing off-road parking and leads to a secure porch and welcoming entrance hall. This opens into a modern open-plan kitchen, dining and family room featuring integrated double ovens, a gas hob, extractor fan, a charming log burner, spotlights throughout and double patio doors opening onto the rear garden.

Situated just off the kitchen is a contemporary family bathroom, while a separate snug offers an additional reception space. Stairs rise to the first-floor landing, which provides access to a spacious master bedroom, two further double bedrooms, one of which benefits from built-in storage, a fourth bedroom, and a modern shower room completing the accommodation.

Outside, the property enjoys a well-maintained rear garden comprising a laid lawn, paved patio seating area and pathway, complemented by mature shrubs, a garden tap and a storage shed, all enclosed by fenced boundaries providing privacy and security.

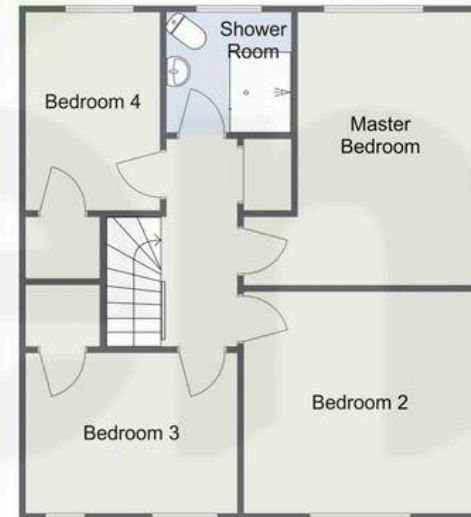


Maple Road, Rednal

Ground Floor



First Floor



Total Area Approx
131.5 Sq M
1415.5 Sq Ft

For illustrative purposes only. Decorative finishes, fixtures & fittings do not represent the current state of the property. Measurements are approximate & not to scale. Floor Plans made using RoomSketcher.