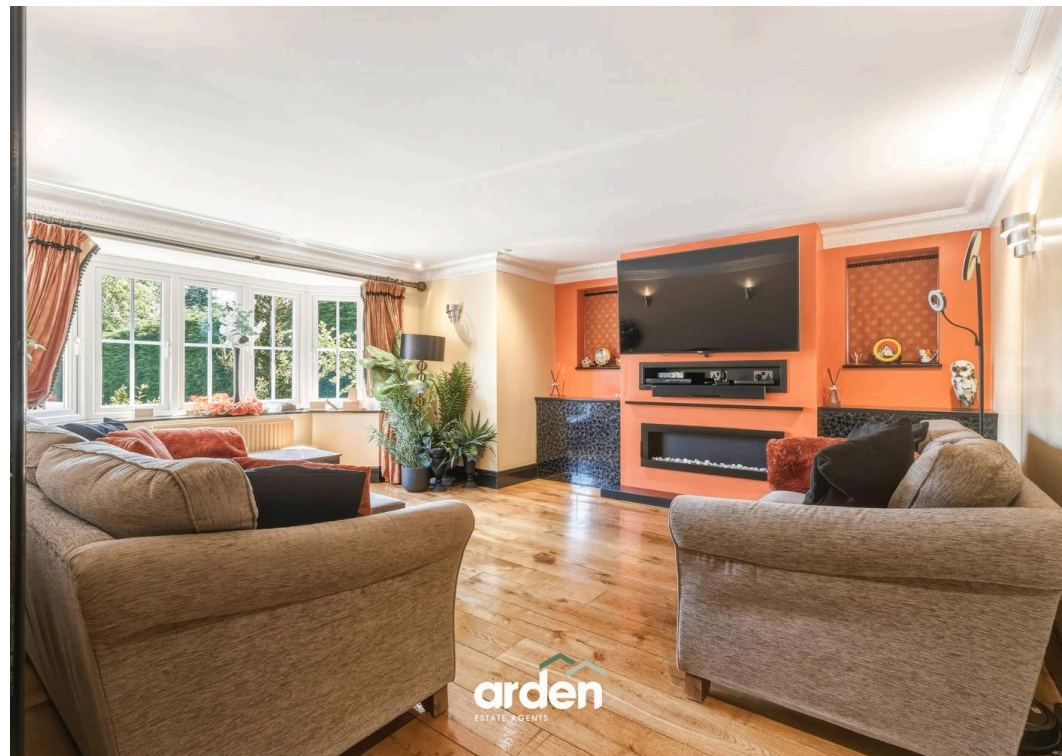




1 Middle House Drive, Marlbrook
Bromsgrove

£975,000





A neatly presented and exceptionally spacious four double bedroom detached executive home, situated in the desirable area of Marlbrook, Bromsgrove. The property provides versatile living space with two reception rooms, a separate study, and a generous breakfast kitchen. Externally, there is a well-proportioned rear garden featuring both a summerhouse and a gym, along with ample off-road parking for multiple vehicles and access to a double garage. The home is positioned within an exclusive development of just five properties, enjoying open views across neighbouring fields.

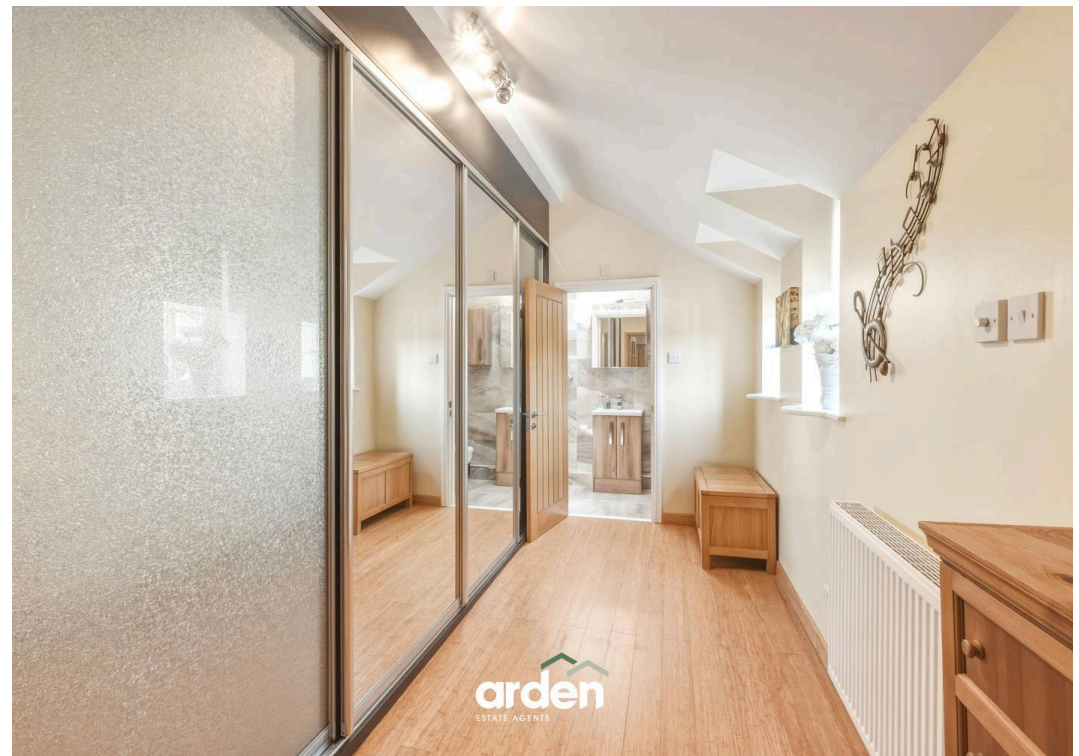
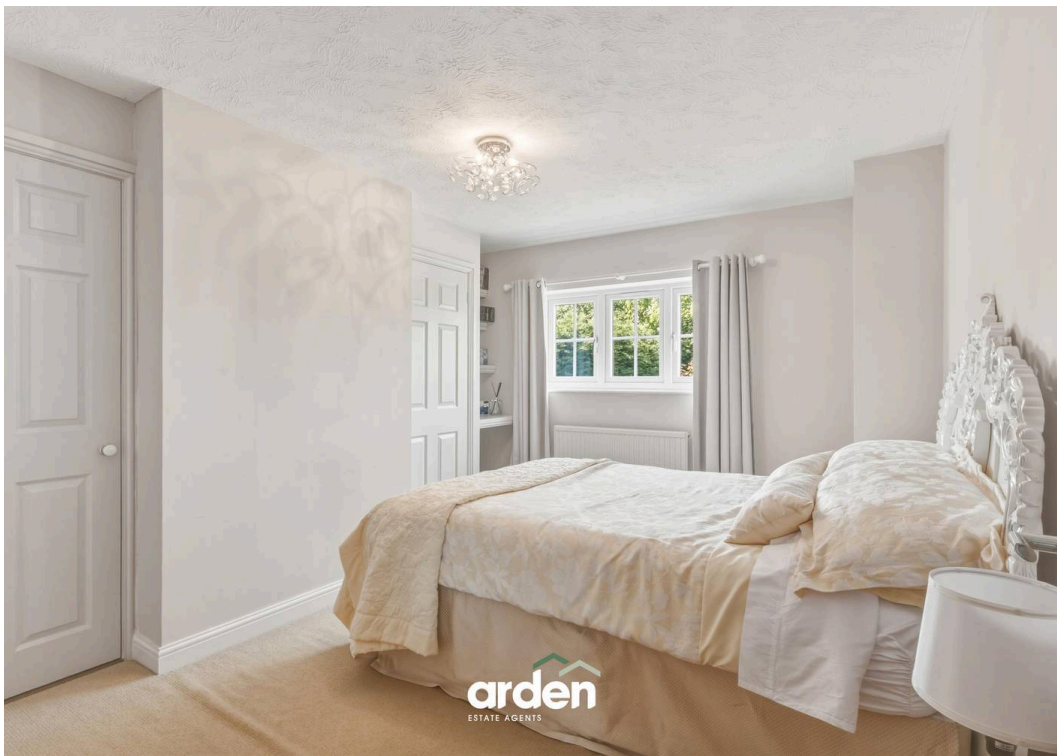
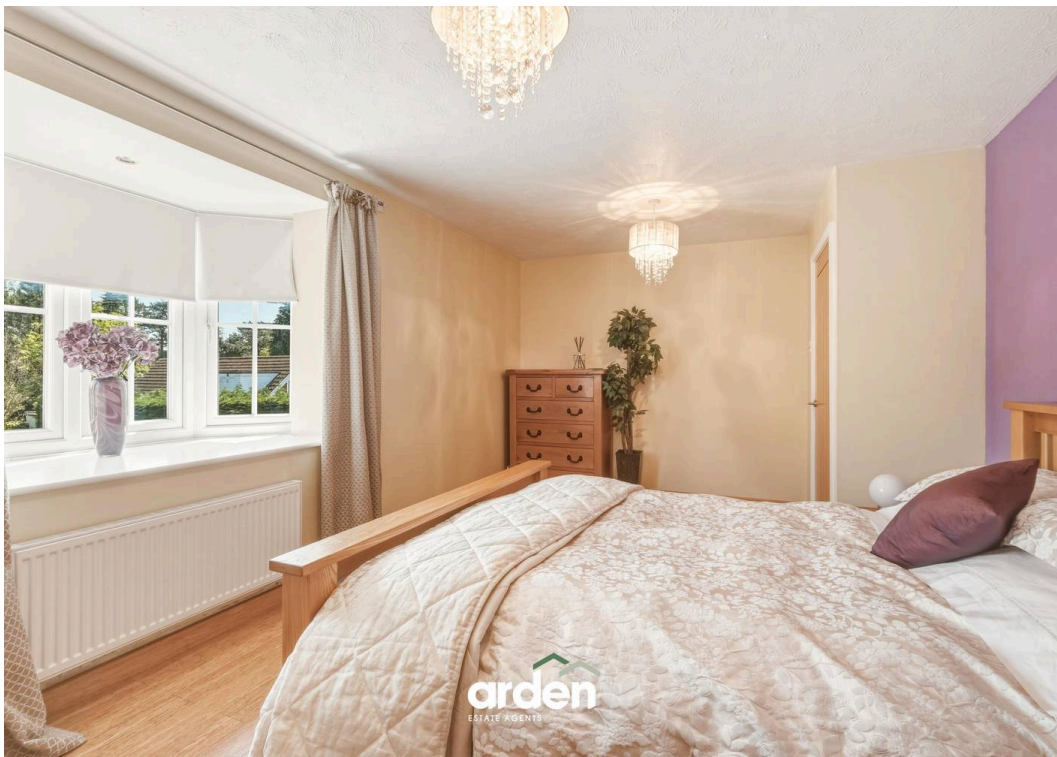
The property is approached via a driveway offering extensive off-road parking and access to the double garage.

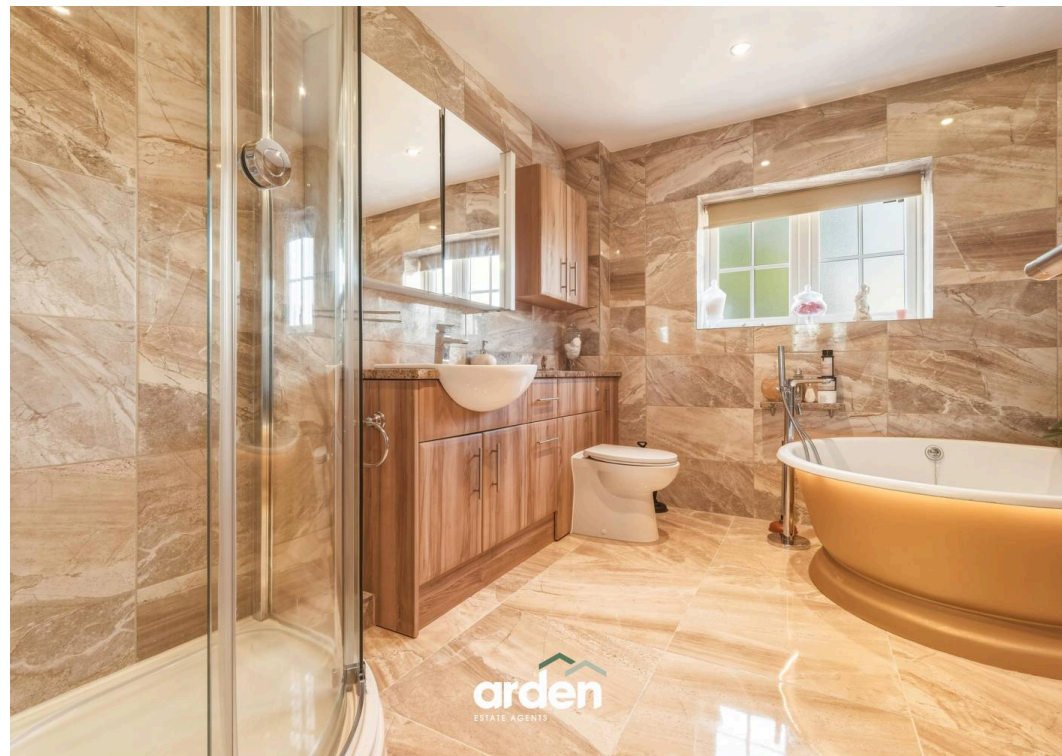
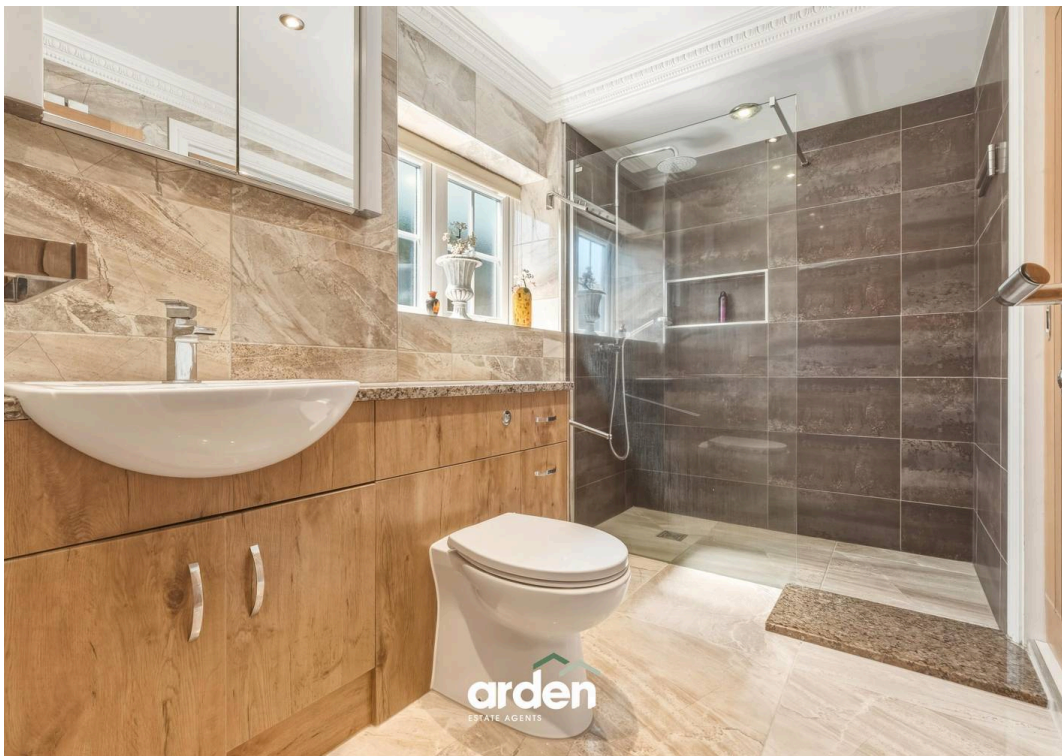
Internally, a newly fitted porch with built-in storage opens into an inviting entrance hallway finished with marble flooring. From here, doors lead to a spacious lounge with a large bay window and feature fireplace; a separate dining room with French doors opening into a conservatory, which benefits from both bi-fold and French doors onto the rear patio—creating an ideal space for entertaining. The well-appointed breakfast kitchen offers integrated appliances including a dishwasher, oven, gas hob, and extractor, along with French doors leading to the garden. Additional ground floor accommodation includes a lobby with fitted cupboards and garden access, a practical utility room with internal access to the garage, a dedicated study ideal for home working, and a convenient downstairs WC.

Upstairs, the first-floor landing leads to an impressive principal bedroom featuring French doors opening onto a slate-paved balcony terrace, a substantial dressing room, and a contemporary re-fitted en suite shower room. Bedroom two is also a generous double with a bay window, its own dressing area with built-in wardrobes, and a modern en suite. Bedroom three benefits from a re-fitted en suite shower room complete with multiple power and USB points, while bedroom four includes built-in storage. The family bathroom has been thoughtfully re-designed, offering a freestanding bath, separate walk-in shower, and additional modern conveniences including USB and shaving points.

Outside, the rear garden has been designed with both relaxation and entertaining in mind. A porcelain-paved patio with outdoor lighting and power sockets provides the perfect setting for al fresco dining, while the lawn is complemented by well-stocked planted borders, all enclosed by fenced boundaries for privacy.

Middle House Drive is a quiet residential street situated in the sought-after Marlbrook area of Bromsgrove. The property benefits from convenient access to local amenities, including shops, schools, and everyday services within Marlbrook and Bromsgrove town centre is just a short drive away. For commuters, the area is well positioned with excellent transport links. The M5 and M42 motorways are easily accessible, offering routes to Birmingham, Worcester, and the wider Midlands. Bromsgrove railway station is also within easy reach, providing regular rail services. Surrounded by Worcestershire countryside, residents can enjoy nearby green spaces and walking routes, while still benefiting from strong connectivity to urban centres.







arden
ESTATE AGENTS



arden
ESTATE AGENTS



arden
ESTATE AGENTS



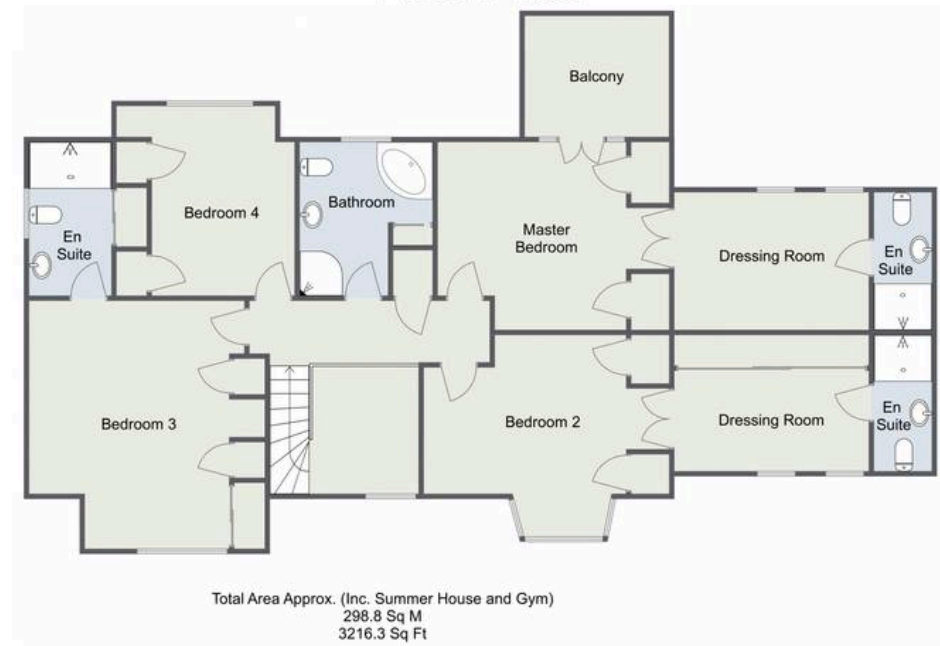
arden
ESTATE AGENTS

Middle House Drive, Bromsgrove

Ground Floor



First Floor



For illustrative purposes only. Decorative finishes, fixtures & fittings do not represent the current state of the property. Measurements are approximate & not to scale. Floor Plans made using RoomSketcher.



Arden Estates Bromsgrove

Arden Estates Bromsgrove, 14 Old Birmingham Road, Lickey End -
B60 1DE

01527 872 479

bromsgrove@ardenestates.co.uk

ardenestates.co.uk/contact-us/bromsgrove/