



**Apt 6, 1 Westwood Grove, Solihull**

Solihull

In Excess of **£280,000**

# Apartment 6

1 Westwood Grove, Solihull

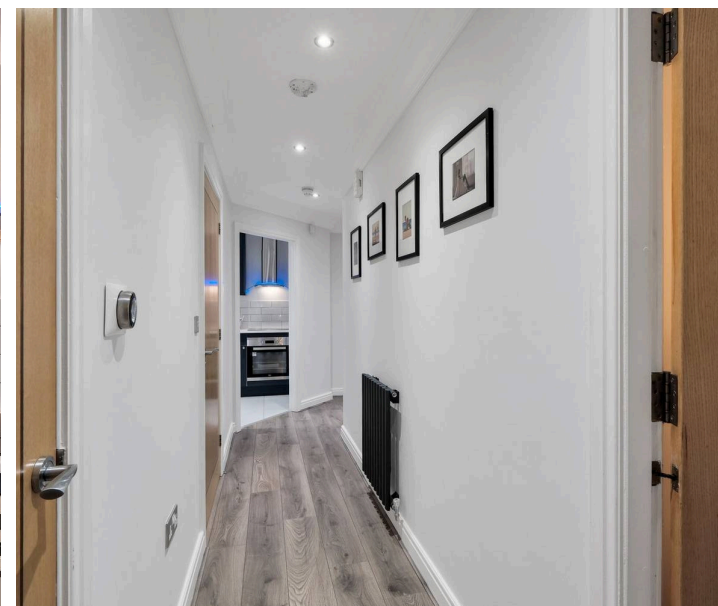
Beautiful 2 bed apartment in Solihull, with lounge diner, modern kitchen, patio, and communal gardens. Allocated parking, ensuite, close to amenities. Leasehold with 106 years remaining. Council Tax band: TBD

Tenure: Leasehold

EPC Energy Efficiency Rating: C

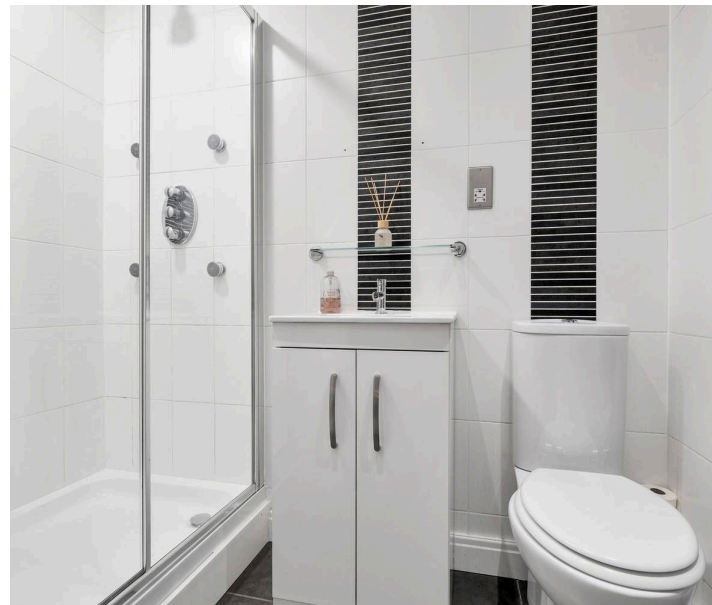
EPC Environmental Impact Rating: C

- Two Double Bedrooms
- Ensuite To Master Bedroom
- No Upward Chain
- Secure Gated Allocated Parking Space
- Patio Area
- Lounge / Diner
- Refurbished Kitchen
- Sought After Location



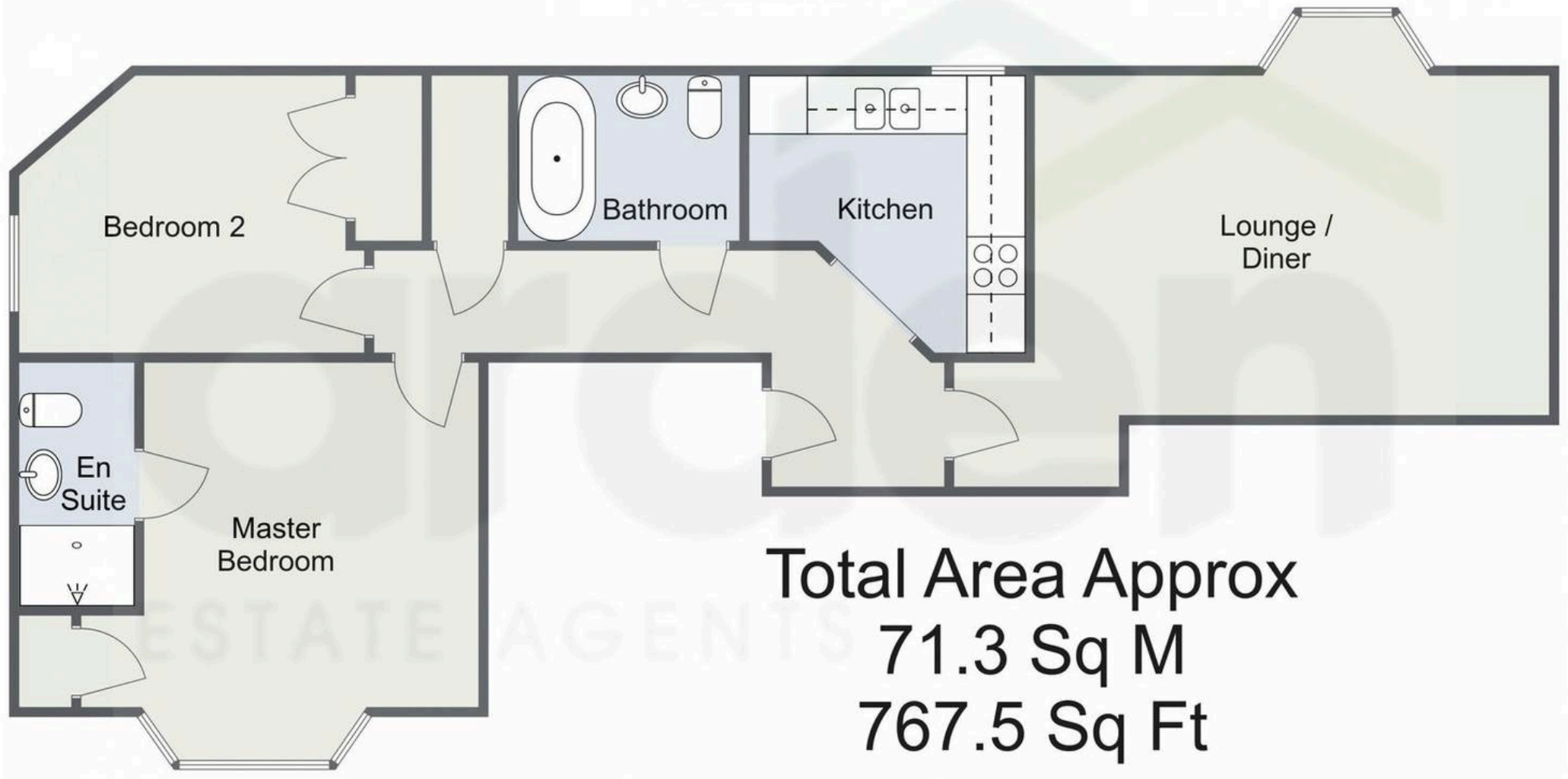


You can include any text here. The text can be modified upon generating your brochure.



# Westwood Grove, Solihull

## Ground Floor



For illustrative purposes only. Decorative finishes, fixtures & fittings do not represent the current state of the property. Measurements are approximate & not to scale. Floor Plans made using RoomSketcher.



## Arden Estates

Arden Estates Solihull, 450 Stratford Road, Solihull - B90 4AQ

0121 745 5888 • [solihull@ardenestates.co.uk](mailto:solihull@ardenestates.co.uk) •