



79 Goldcrest Way, Droitwich

Droitwich

arden  
ESTATE AGENTS

£450,000



## 79 Goldcrest Way

Droitwich, Droitwich

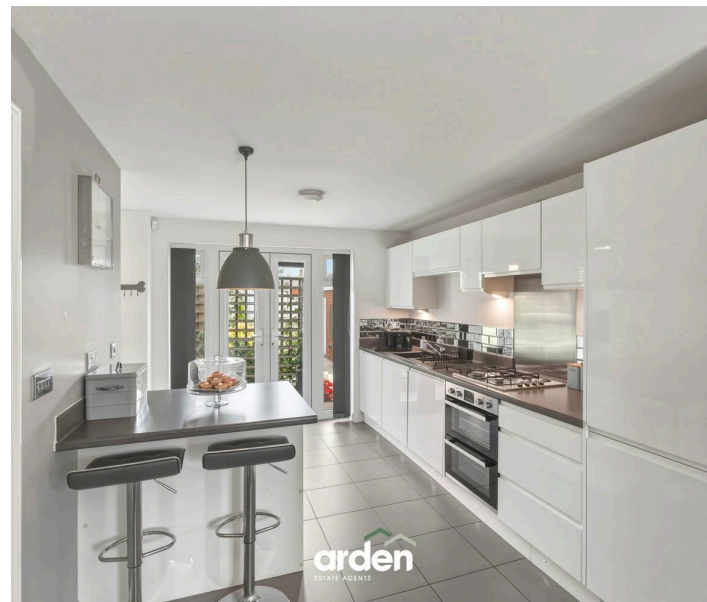
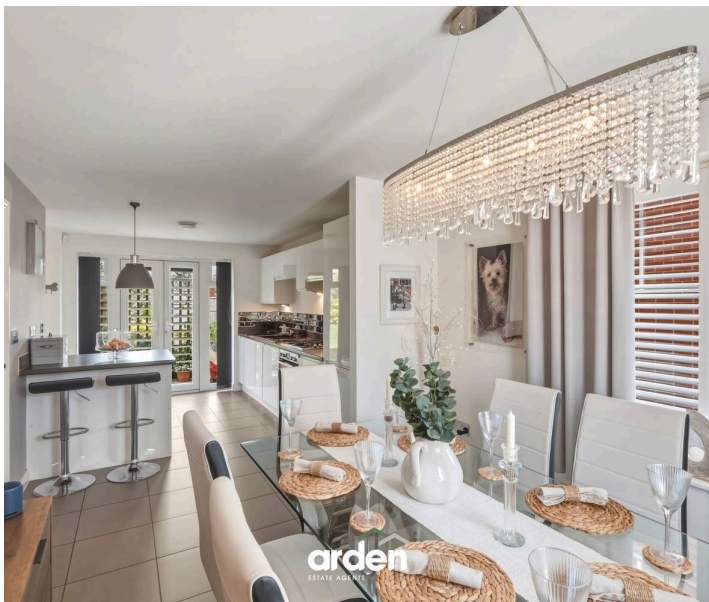
Council Tax band: E

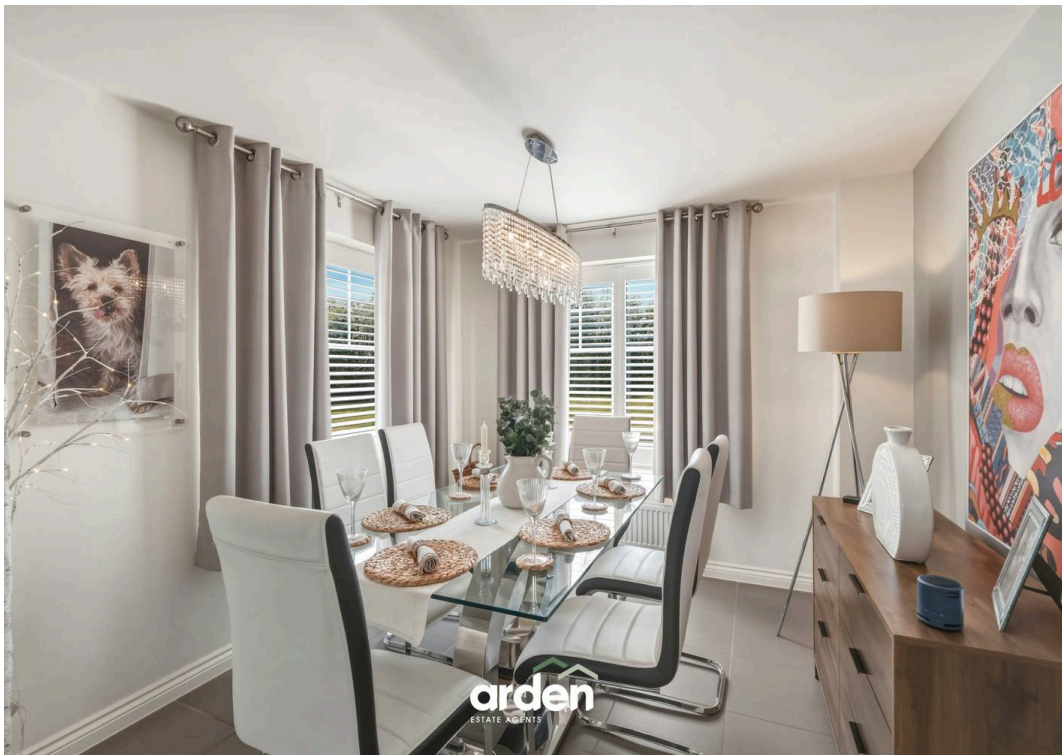
Tenure: Freehold

EPC Energy Efficiency Rating: B

EPC Environmental Impact Rating: B

- Detached Double Fronted Home With Outstanding Kerb Appeal
- Situated In The Popular WR9 Postcode - Close To Local Amenities
- Upgraded Features Throughout
- Over 1200 Sq Ft Of Living Space
- Four Double Bedrooms & Two Bathrooms Including A En-Suite To The Main Bedroom
- Garage & Parking For Two Vehicles





arden  
ESTATE AGENTS



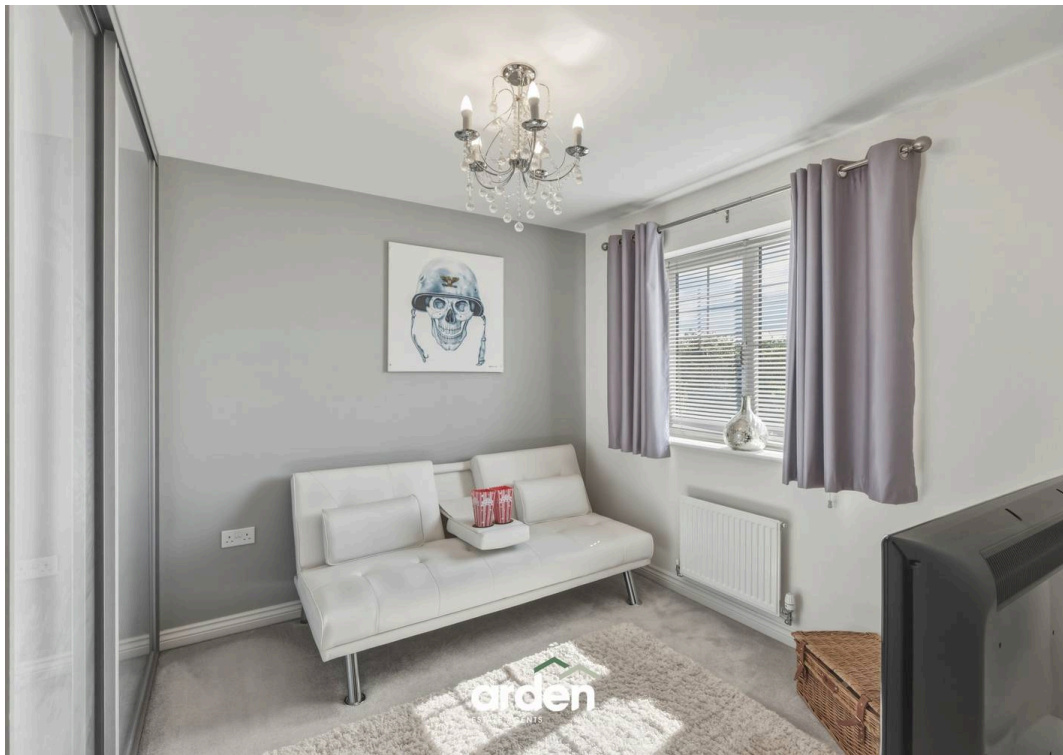
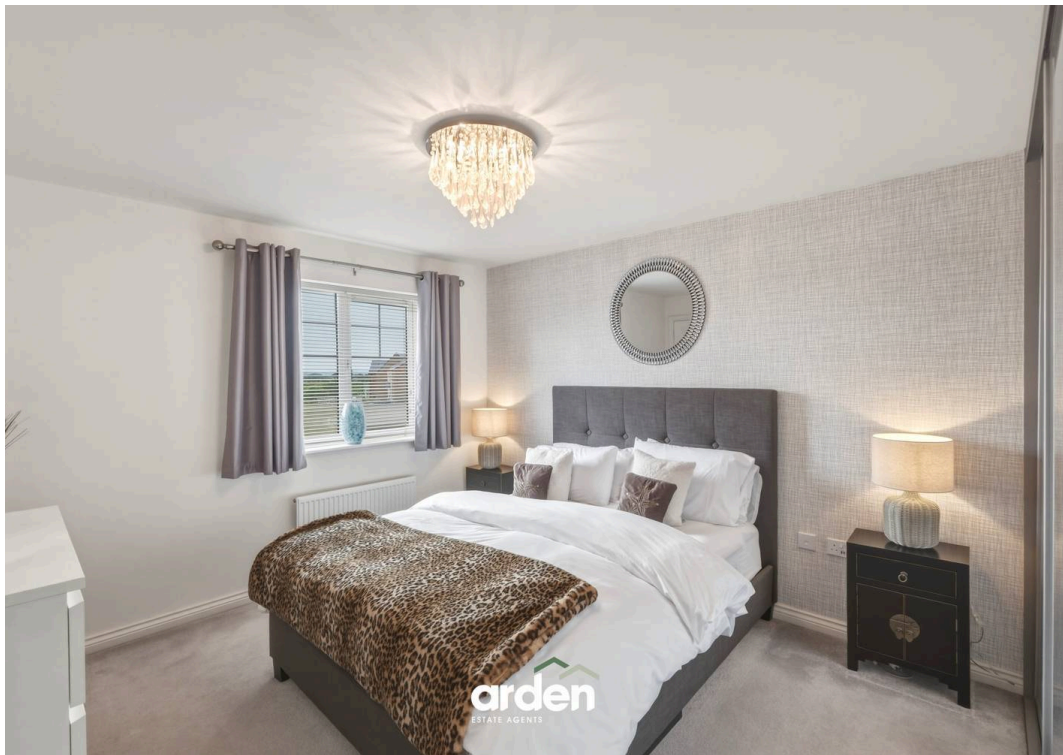
arden  
ESTATE AGENTS



arden  
ESTATE AGENTS



arden  
ESTATE AGENTS





Coldreest Way, Droitwich  
Ground Floor



Total Area Approx  
(Excl Garage)  
116 Sq M  
1248.61 Sq Ft

For illustrative purposes only. Decorative finishes, fixtures & fittings do not represent the current state of the property. Measurements are approximate & not to scale. Floor Plans made using RoomSketcher.

## Arden Estates

Arden Estates Worcester, 15 Foregate Street, Worcester - WR1 1DB

01905 958 290 • worcester@ardenestates.co.uk •