



165 Sladepool Farm Road, Birmingham

Birmingham

£260,000

# 165 Sladepool Farm Road

Birmingham

A beautifully presented and modern three-bedroom mid-terrace home on the popular Sladepool Farm Road, B14. Viewing highly recommended.

Council Tax band: B

Tenure: Freehold

EPC Energy Efficiency Rating: E

EPC Environmental Impact Rating: E

- Beautifully Presented Three Bedroom Mid-Terrace Home
- Bright & Spacious Front Lounge
- Modern Kitchen/Diner
- Two Generous Double Bedrooms & One Single Bedroom
- Stylish Family Bathroom with Shower Over Bath
- Recently Laid Block-Paved Driveway for Two Cars
- Generous & Family-Friendly Rear Garden
- Patio Areas Ideal for Entertaining
- Popular Residential Location on Sladepool Farm Road, B14
- Excellent Transport Links, Schools & Local Amenities Nearby



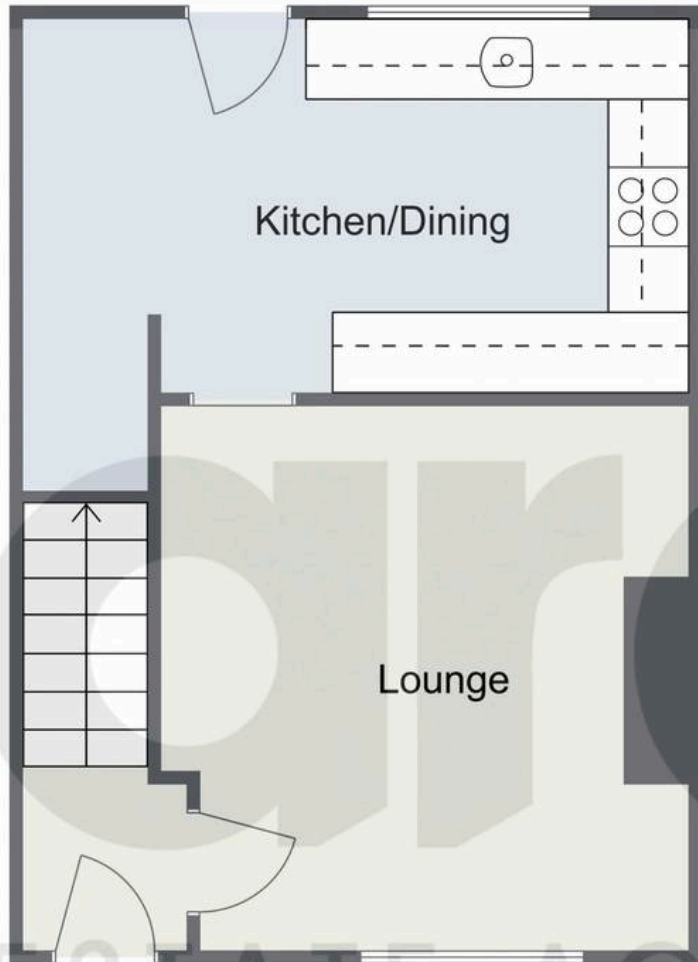


You can include any text here. The text can be modified upon generating your brochure.

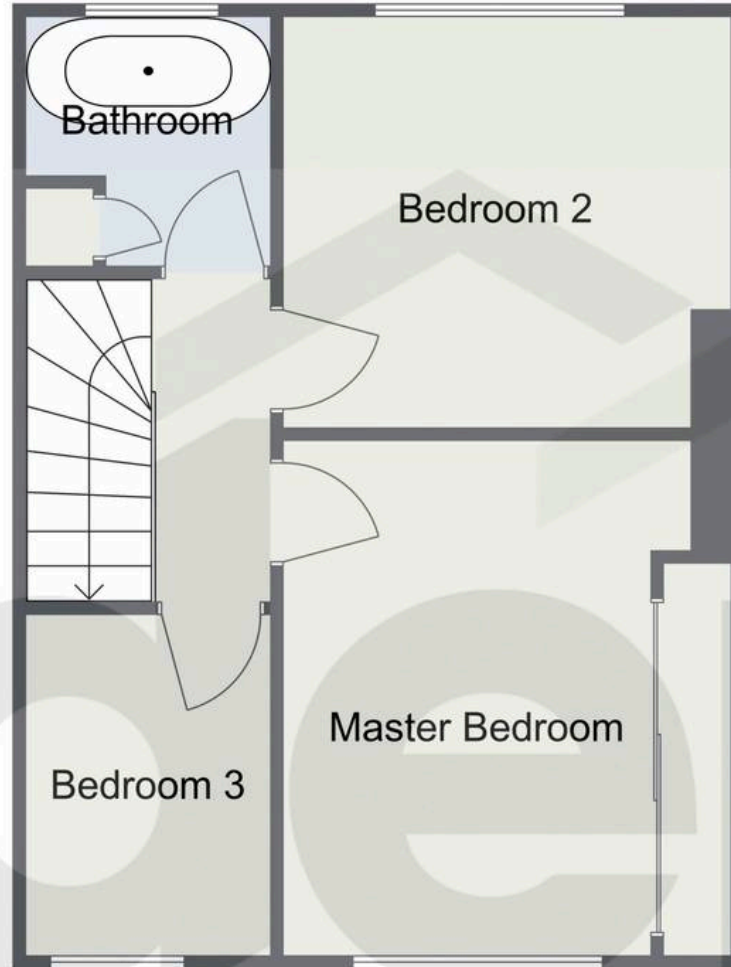


Sladepool Farm Road, Birmingham  
First Floor

Ground Floor

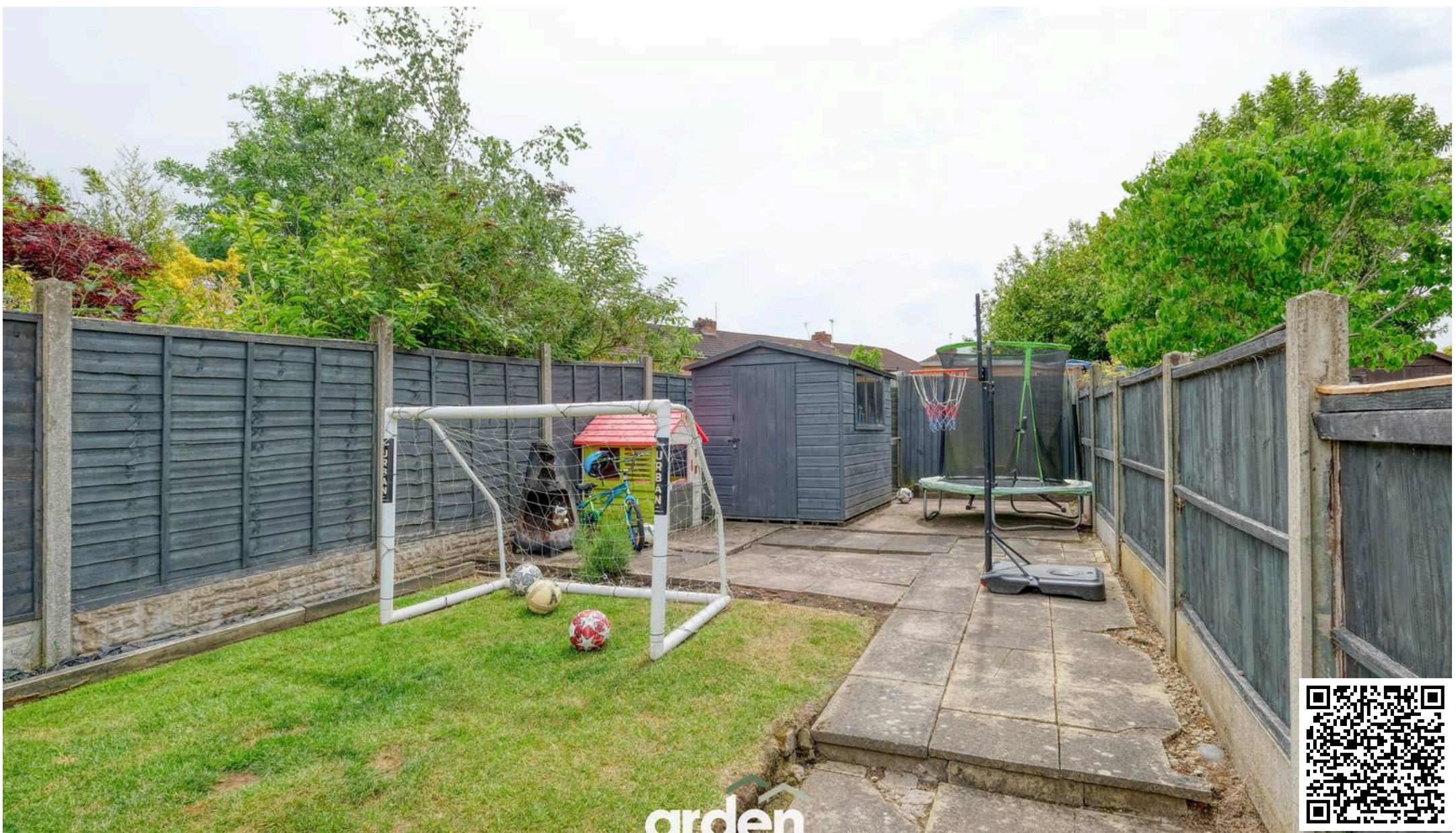


First Floor



Total Area Approx  
70.2 Sq M  
755.62 Sq Ft

For illustrative purposes only. Decorative finishes, fixtures & fittings do not represent the current state of the property. Measurements are approximate & not to scale. Floor Plans made using RoomSketcher.



## Arden Estates

Arden Estates Solihull, 450 Stratford Road, Solihull - B90 4AQ

0121 745 5888 • [solihull@ardenestates.co.uk](mailto:solihull@ardenestates.co.uk) •