



6 Willow Tree Drive, Barnt Green

Offers Over £150,000

6 Willow Tree Drive

Barnt Green, Birmingham

NO ONWARD CHAIN

A two bedroom first floor maisonette, situated within a retirement development, located in the sought-after village of Barnt Green, offering a lounge, kitchen and bathroom.

Council Tax band: B

Tenure: Leasehold

EPC Energy Efficiency Rating: C

- Retirement development - Over 55's only
- Sought after village location
- First floor maisonette
- Two bedrooms
- Bathroom
- Kitchen
- Lounge
- On-road parking
- Warden assisted with communal area's

Lounge 4.61m x 3.12m

Kitchen 2.71m x 2.20m

Dining Room 3.21m x 2.40m

Bedroom 4.10m x 2.68m max

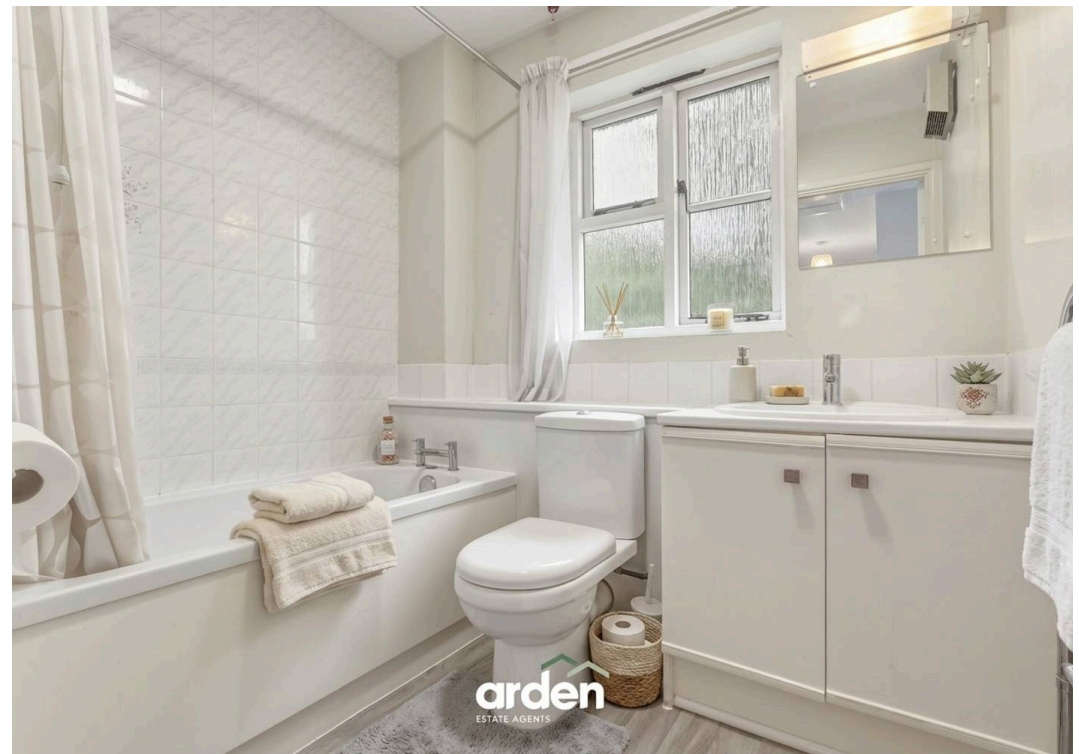
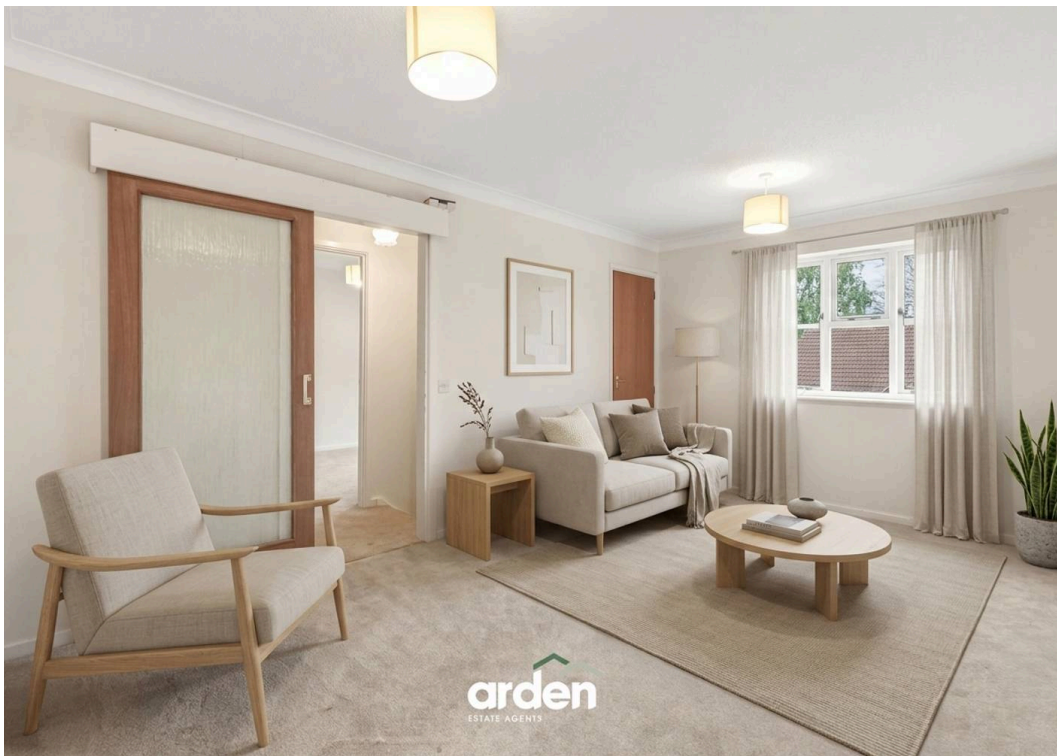
Bathroom 2.10m x 1.73m

Willow Tree Drive, Barnt Green
First Floor



Total Area Approx
53.0 Sq M
570.5 Sq Ft

For illustrative purposes only. Decorative finishes, fixtures & fittings do not represent the current state of the property. Measurements are approximate & not to scale. Floor Plans made using RoomSketcher.





Arden Estates

Arden Estates Barnt Green, 67 Hewell Road, Barnt Green – B45 8NL

0121 447 8300 • barntgreen@ardenestates.co.uk •

These particulars are for general guidance only and are based on information supplied and approved by the seller. Complete accuracy cannot be guaranteed and may be subject to errors/omissions. They do not constitute part of a contract in any way. The mention of any fixtures, fittings and/or appliances does not imply that they are included or that they are in working order.