



6 Dalesbred Place, Worcester

Worcester

Offers Over £300,000

6 Dalesbred Place

Worcester, Worcester

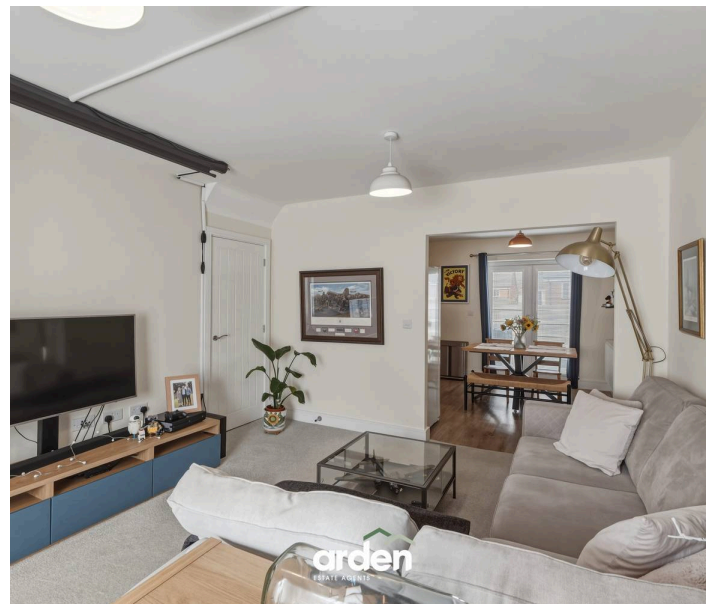
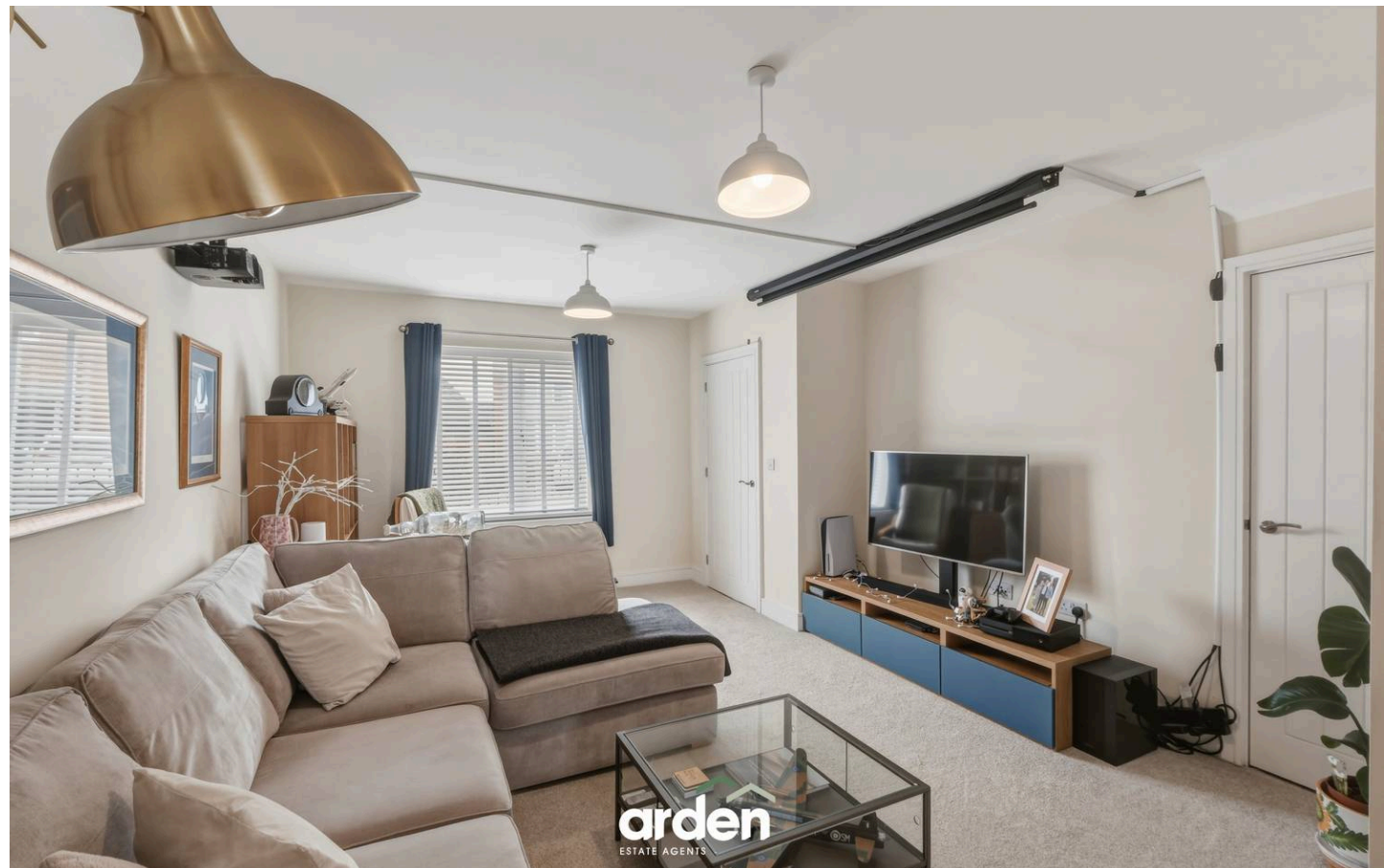
Council Tax band: TBD

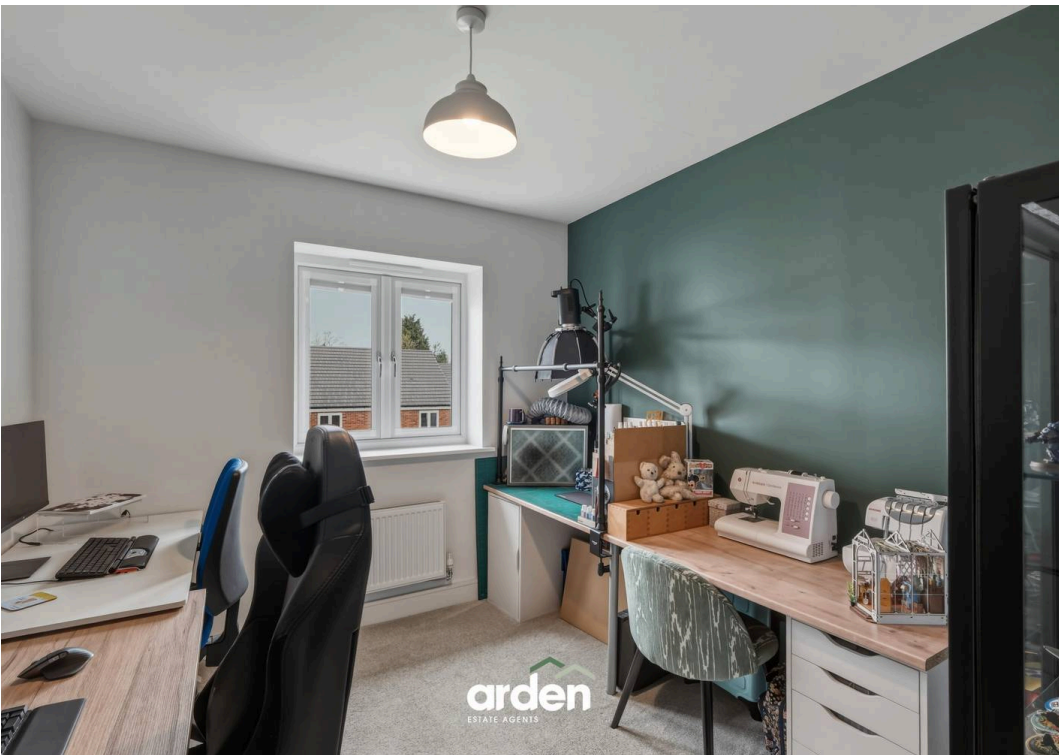
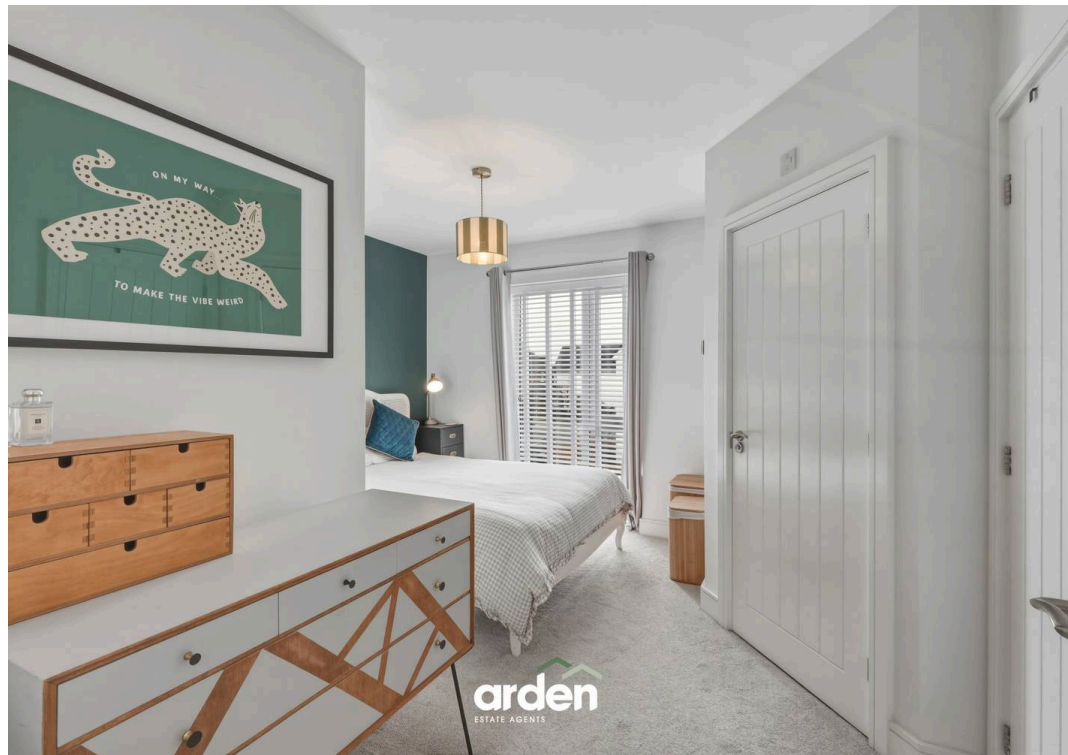
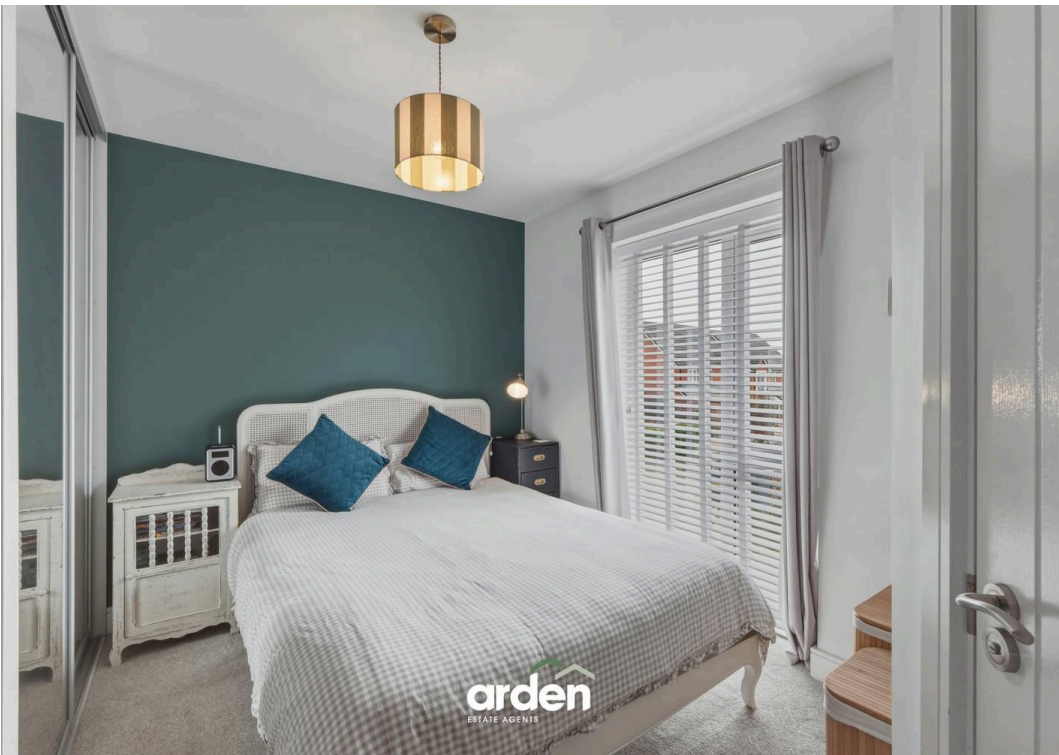
Tenure: Freehold

EPC Energy Efficiency Rating: B

EPC Environmental Impact Rating: B

- Located In The Ever-Popular Whittington Village - With Great Connections To The M5 Motorway, Local Pubs & Schools
- Semi Detached Modern Home
- En-Suite To Main Bedroom Plus A Family Bathroom
- Larger-Than-Average Private Rear Garden
- Tandem Parking For Three Vehicles
- Open Plan Living Throughout The Ground Floor



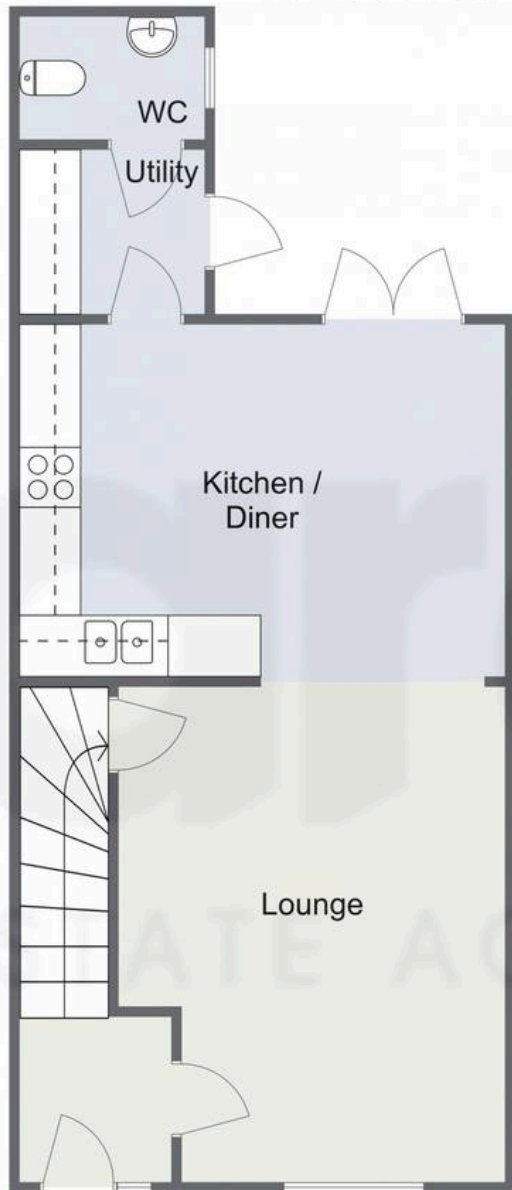


You can include any text here. The text can be modified upon generating your brochure.

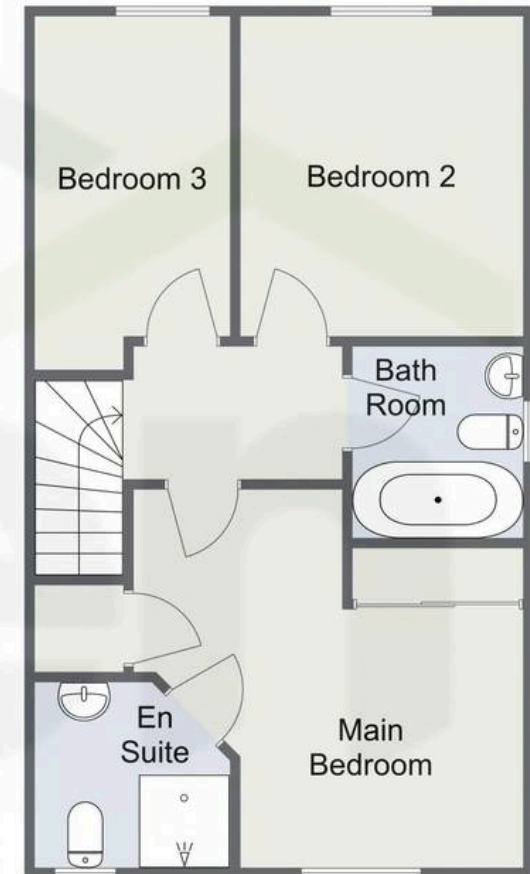


Dalesbred Place, Worcester

Ground Floor



First Floor



Total Area Approx
85.9 Sq M
924.6 Sq Ft

For illustrative purposes only. Decorative finishes, fixtures & fittings do not represent the current state of the property. Measurements are approximate & not to scale. Floor Plans made using RoomSketcher.



Arden Estates

Arden Estates Worcester, 15 Foregate Street, Worcester - WR1 1DB

01905 958 290 • worcester@ardenestates.co.uk •