



8 Easton Grove, Hollywood

Birmingham

Offers in Region of **£400,000**

8 Easton Grove

Hollywood, Birmingham

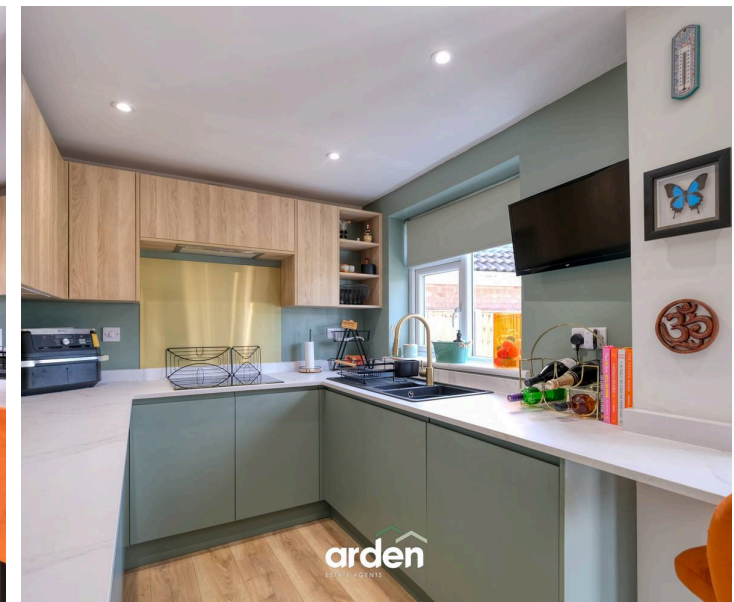
This renovated semi-detached dormer bungalow in sought-after Wythall, B47, offers two double bedrooms, modern living areas, a garage with utility, off-road parking, and a private garden. Council Tax band: D

Tenure: Freehold

EPC Energy Efficiency Rating: C

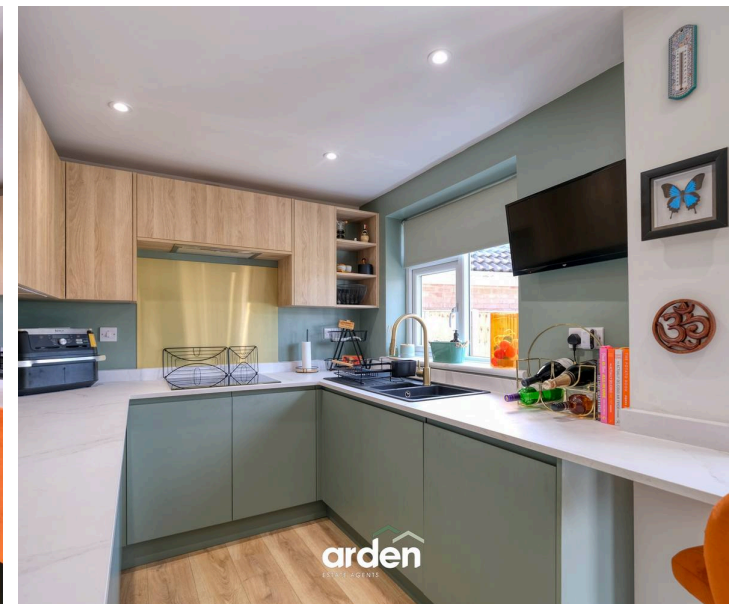
EPC Environmental Impact Rating:

- Extensive refurbishment completed since 2024, offering a modern, move-in-ready home
- Versatile living space including dormer extension and conservatory
- Sought- after location
- Quiet cul-de-sac location
- Useful utility and storage space
- Beautifully presented rear garden
- Off-road parking for multiple vehicles
- Close to local amenities
- Excellent school catchment



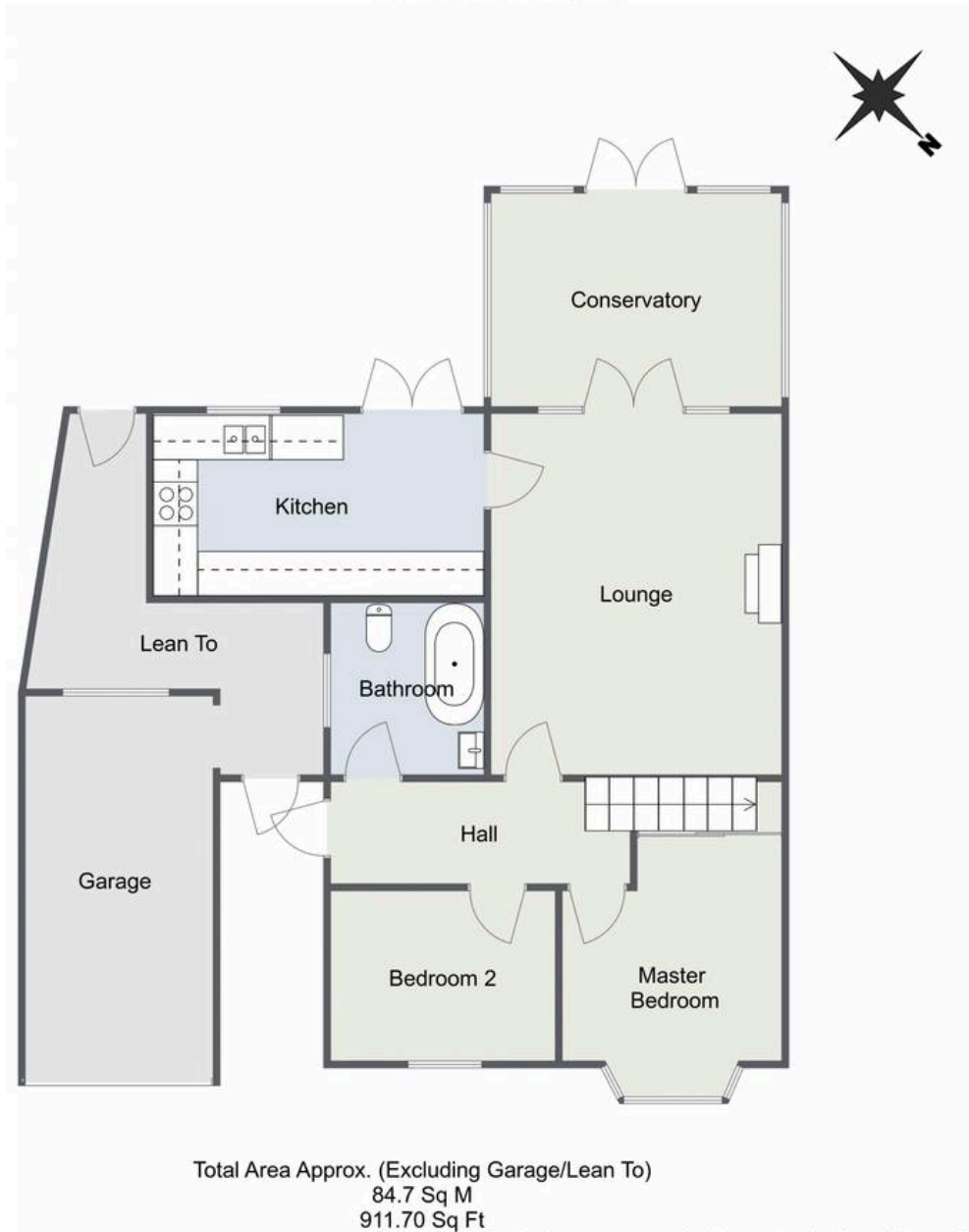


You can include any text here. The text can be modified upon generating your brochure.



Easton Grove, Hollywood, Birmingham

Ground Floor



Total Area Approx. (Excluding Garage/Lean To)
84.7 Sq M
911.70 Sq Ft

For illustrative purposes only. Decorative finishes, fixtures & fittings do not represent the current state of the property. Measurements are approximate & not to scale. Floor Plans made using RoomSketcher.

First Floor





arden



Arden Estates

Arden Estates Solihull, 450 Stratford Road, Solihull – B90 4AQ

0121 745 5888 • solihull@ardenestates.co.uk •