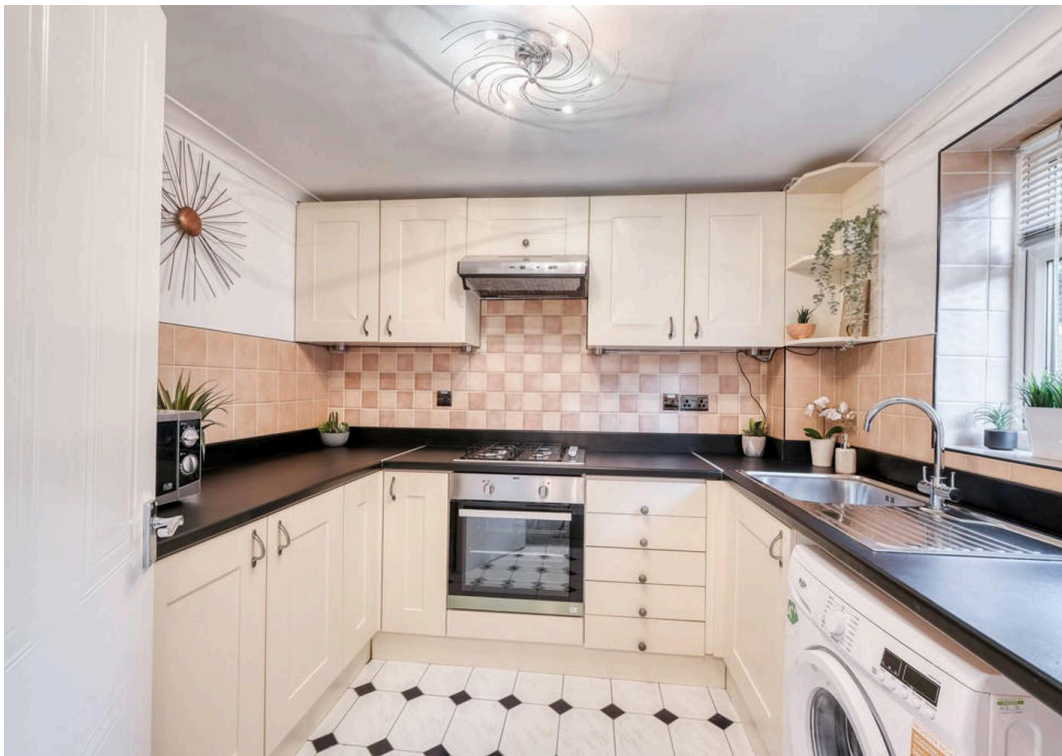




arden
ESTATE AGENTS

arden
ESTATE AGENTS



Situated in a convenient and well-connected location, this well-proportioned two-bedroom home offers comfortable living across two floors, making it ideal for first-time buyers, small families, or investors alike with a spacious lounge, modern family bathroom and low maintenance rear garden.

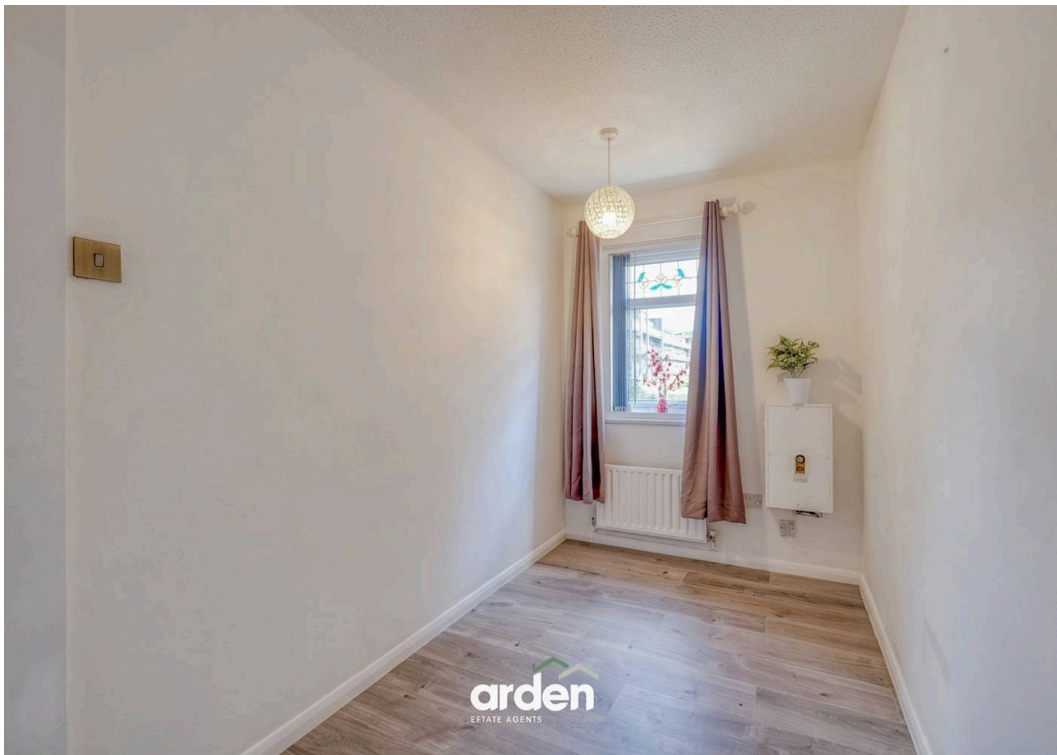
The property benefits from two allocated parking spaces. Upon entering, a welcoming entrance hall leads through to a sizeable lounge, where double patio doors open onto the rear garden, allowing an abundance of natural light to fill the space. The modern kitchen is well-appointed with integrated appliances, including an oven, gas hob, and extractor fan.

Stairs rise to the first-floor landing, providing access to the master bedroom with built-in wardrobes, a second bedroom, and a contemporary family bathroom fitted with a shower over the bath.

This south facing rear garden is designed for low maintenance living, featuring a combination of raised decking and a gravelled area. A shed is positioned at the rear of the garden, along with a gate providing access to the back of the property, all enclosed by a mixture of secure fenced and brick boundaries.

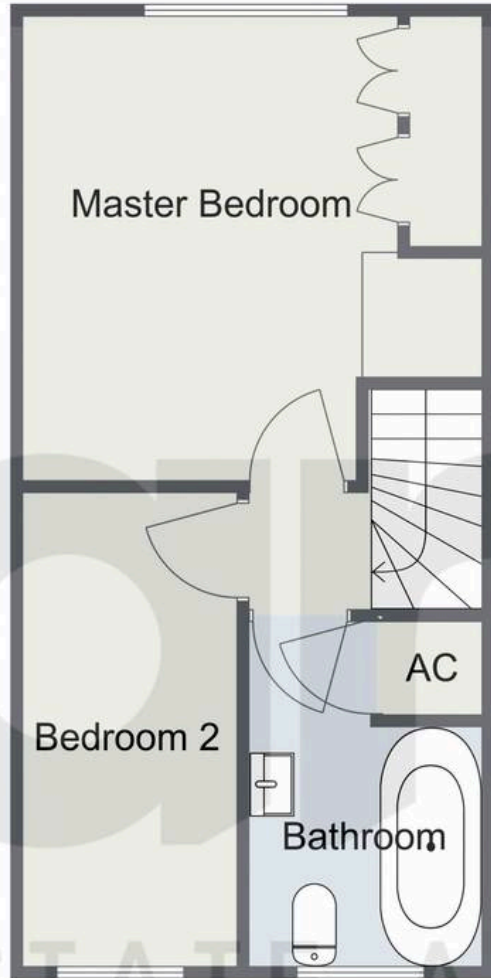
Situated in the highly sought-after suburb of Rednal, this property on Cofton Court enjoys a quiet, family-friendly cul-de-sac setting. Residents benefit from excellent access to local shops, schools, and green spaces, while Birmingham city centre is just a short drive away. Well-connected by road and public transport, this location combines peaceful suburban living with convenient urban access.



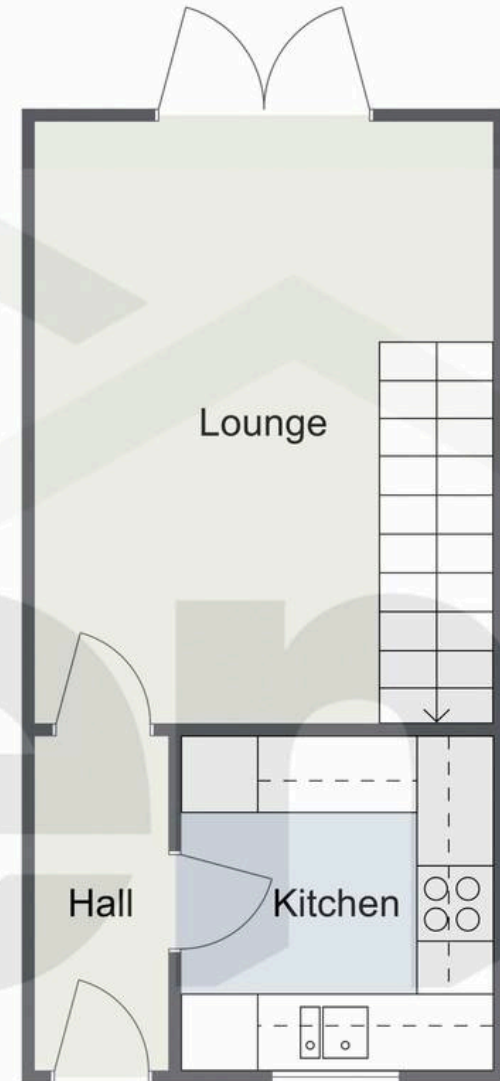


Cofton Court, Rednal

First Floor



Ground Floor



Total Area Approx:
61.2 sq metres (659 sq ft)

For illustrative purposes only. Decorative finishes, fixtures & fittings do not represent the current state of the property. Measurements are approximate & not to scale. Floor Plans made using RoomSketcher.



16 Cofton Court, Rednal, B45 8XR

Arden Estates Rubery, 14 Old Birmingham Road, Lickey End - B60 1DE

0121 453 4349 • rubery@ardenestates.co.uk •