



42 Henwick Avenue, Worcester

Worcester

arden
ESTATE AGENTS

£280,000



42 Henwick Avenue

Worcester, Worcester

Council Tax band: B

Tenure: Freehold

EPC Energy Efficiency Rating: C

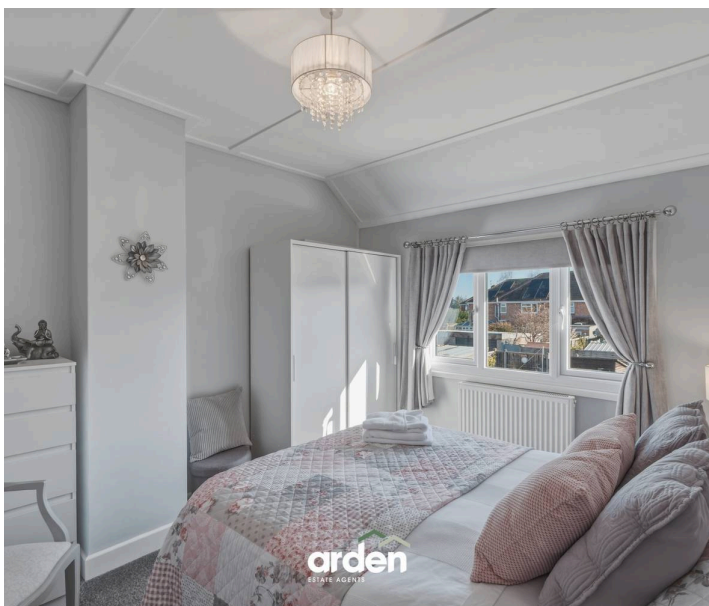
EPC Environmental Impact Rating: C

- Walking Distance To Local Amenities, Including A Butchers, Supermarket & Bakery
- Extended Family Home With A Modern Finish
- Parking For Two Vehicles
- Three Bedrooms & A Family Bathroom
- Low Maintenance Rear Garden
- Close To Local Primary Schools & High School



42 Henwick Avenue

Worcester, Worcester

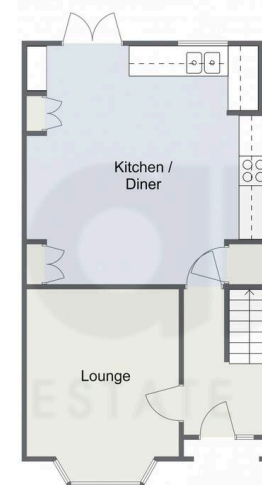




Henwick Avenue, Worcester

First Floor

Ground Floor



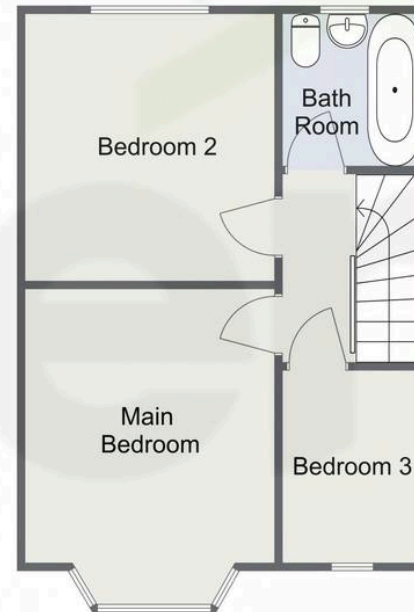
Total Area Approx
72.5 Sq M
780.4 Sq Ft

For illustrative purposes only. Decorative finishes, fixtures & fittings do not represent the current state of the property. Measurements are approximate & not to scale. Floor Plans made using RoomSketcher.

Henwick Avenue, Worcester

First Floor

Ground Floor



Total Area Approx
72.5 Sq M
780.4 Sq Ft

For illustrative purposes only. Decorative finishes, fixtures & fittings do not represent the current state of the property. Measurements are approximate & not to scale. Floor Plans made using RoomSketcher.

Arden Estates

Arden Estates Worcester, 15 Foregate Street, Worcester – WR1 1DB

01905 958 290 • worcester@ardenestates.co.uk •