



13 Great House Road, Worcester

Worcester

**arden**  
ESTATE AGENTS

£260,000



## 13 Great House Road

Worcester, Worcester

Council Tax band: C

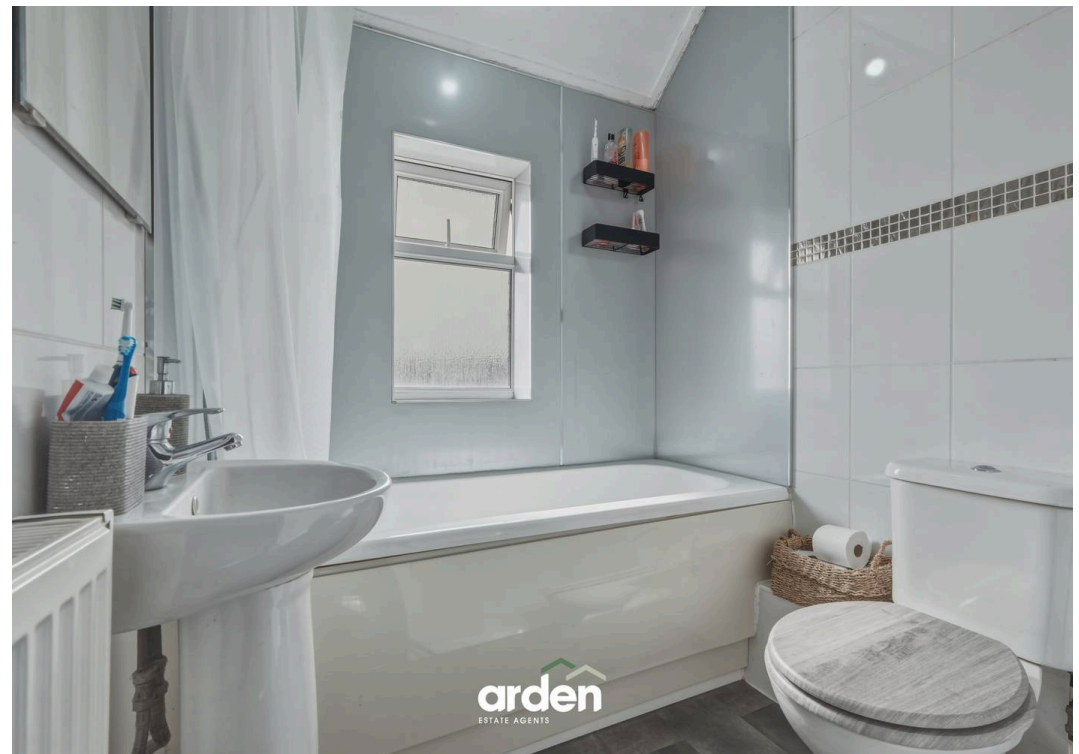
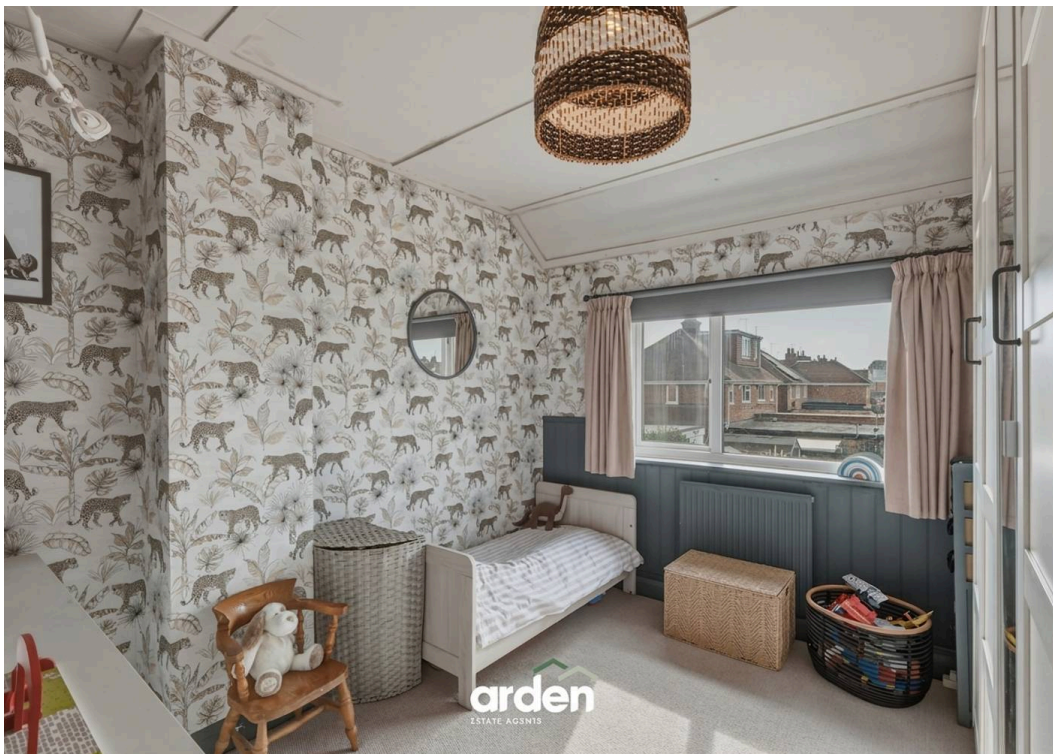
Tenure: Freehold

EPC Energy Efficiency Rating: D

EPC Environmental Impact Rating: D

- Mid- Terrace Family Home Within Walking Distance To Local Schools
- Open Plan Kitchen-Diner
- Three Bedrooms & Family Bathroom
- Nearby Local Businesses Include, A Butchers, Bakery & Florist
- Modern Rustic Decor
- Parking For Two Vehicles





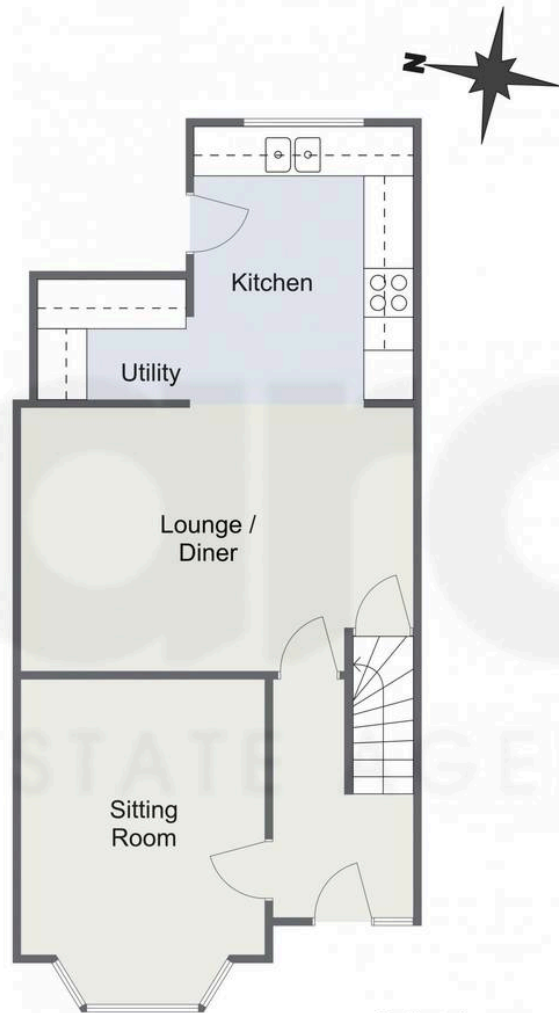


**GARDEN**

**DRIVEWAY**

2 Parking Spaces

Great House Road, Worcester  
Ground Floor



First Floor



Total Area Approx  
77.1 Sq M  
829.9 Sq Ft

For illustrative purposes only. Decorative finishes, fixtures & fittings do not represent the current state of the property. Measurements are approximate & not to scale. Floor Plans made using RoomSketcher.

**Arden Estates**

Arden Estates Worcester, 15 Foregate Street, Worcester – WR1 1DB

01905 958 290 • worcester@ardenestates.co.uk •