



1 Greenfield Avenue, Marlbrook
Bromsgrove

£395,000



A beautifully presented three-bedroom detached home, offered with no onward chain, featuring a contemporary kitchen/diner, spacious lounge, en suite to the master bedroom, a low-maintenance rear garden, off-road parking, and a garage. Ideally located in the sought-after area of Marlbrook, Bromsgrove, the property enjoys picturesque views of rolling countryside to the front.

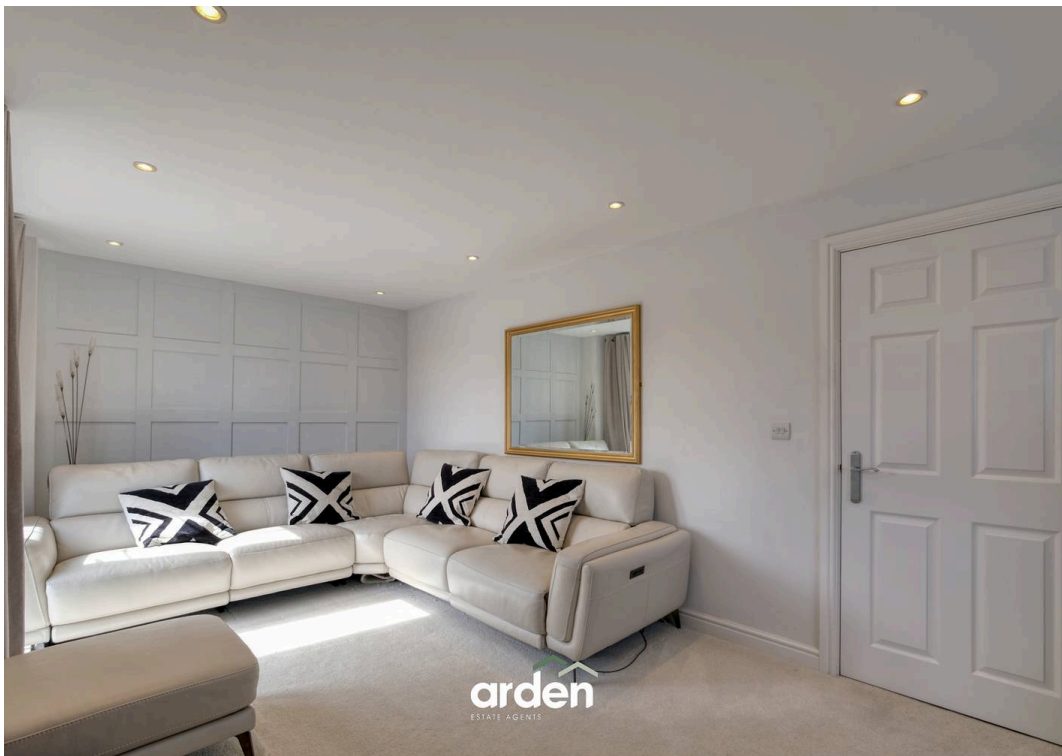
The home is approached via a driveway providing off-road parking for two vehicles, along with access to the garage.

Inside, the welcoming hallway, complete with a useful storage cupboard, leads to a modern kitchen/diner with dual-aspect windows to the front and French doors opening onto the rear garden. The kitchen is well-equipped with integrated appliances, including a washing machine, dishwasher, fridge/freezer, oven, gas hob, and extractor. The lounge features an attractive fireplace, dual-aspect windows to the front, and French doors leading out to a decking area. A convenient downstairs WC completes the ground floor.

Upstairs, the landing provides access to the master bedroom, which benefits from dual-aspect windows with lovely views over open fields and an en suite shower room. There is also a second double bedroom, a third bedroom, and a family bathroom.

Externally, the property boasts a low-maintenance rear garden, featuring a decking seating area, lawn, and fenced boundaries, making it ideal for outdoor relaxation and entertaining.

Situated in Marlbrook, the property benefits from having a number of local amenities and plenty of space for idyllic walks including the nearby Lickey Hills Country Park, while being conveniently located within easy distance from the town centre offering a new leisure centre, a David Lloyd Gym, Bromsgrove Golf Course and a range of eateries, supermarkets as well as doctors, dentists, Health Centre and professional services. In addition, there are first, middle, and high schools, including the prestigious Bromsgrove School. Bromsgrove also provides easy access to the national motorway network and commuting to the West Midlands conurbation (from M5 and M42 junctions).

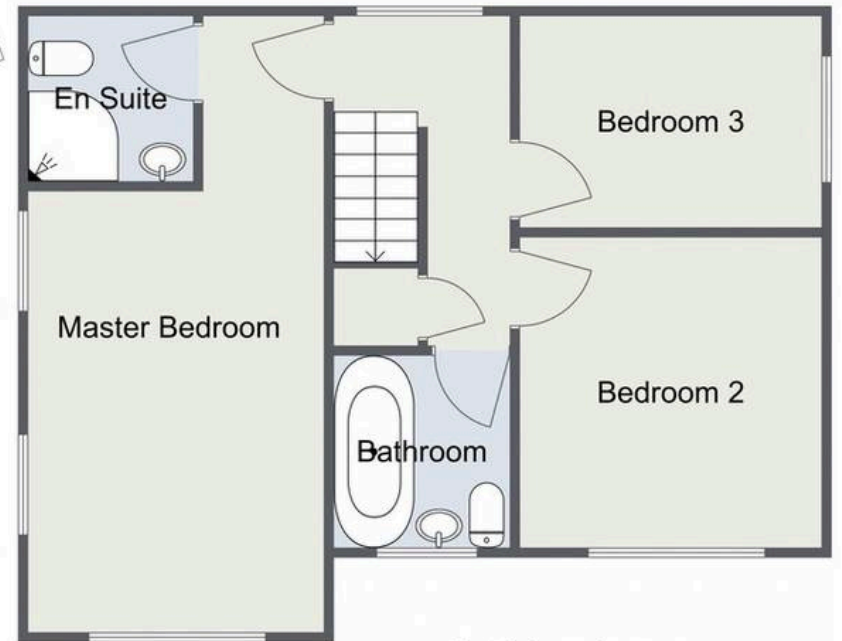


Greenfield Avenue, Bromsgrove

Ground Floor



First Floor



Total Area Approx
100.5 Sq M
1081.77 Sq Ft

For illustrative purposes only. Decorative finishes, fixtures & fittings do not represent the current state of the property. Measurements are approximate & not to scale. Floor Plans made using RoomSketcher.



Arden Estates Bromsgrove

Arden Estates Bromsgrove, 14 Old Birmingham Road, Lickey End -
B60 1DE

01527 872 479

bromsgrove@ardenestates.co.uk

ardenestates.co.uk/contact-us/bromsgrove/