



Moseley View, 1, Valentine Road, Birmingham

Birmingham

£250,000

# Moseley View, 1, Valentine Road

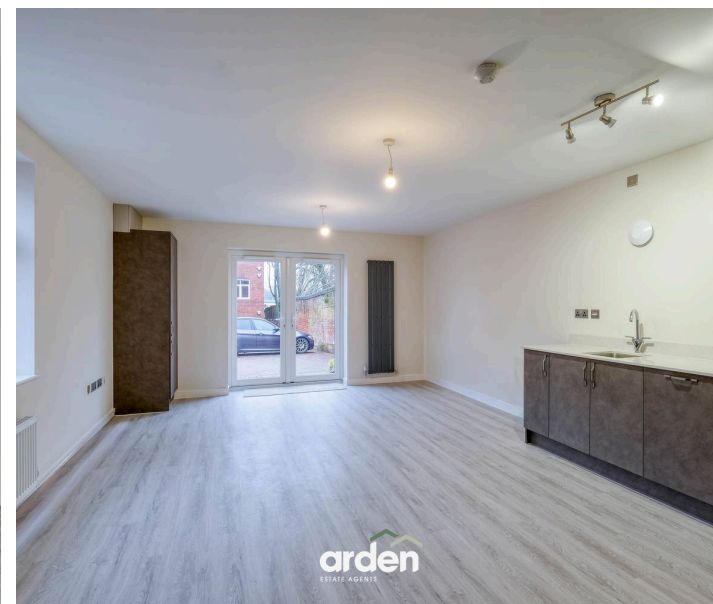
Birmingham

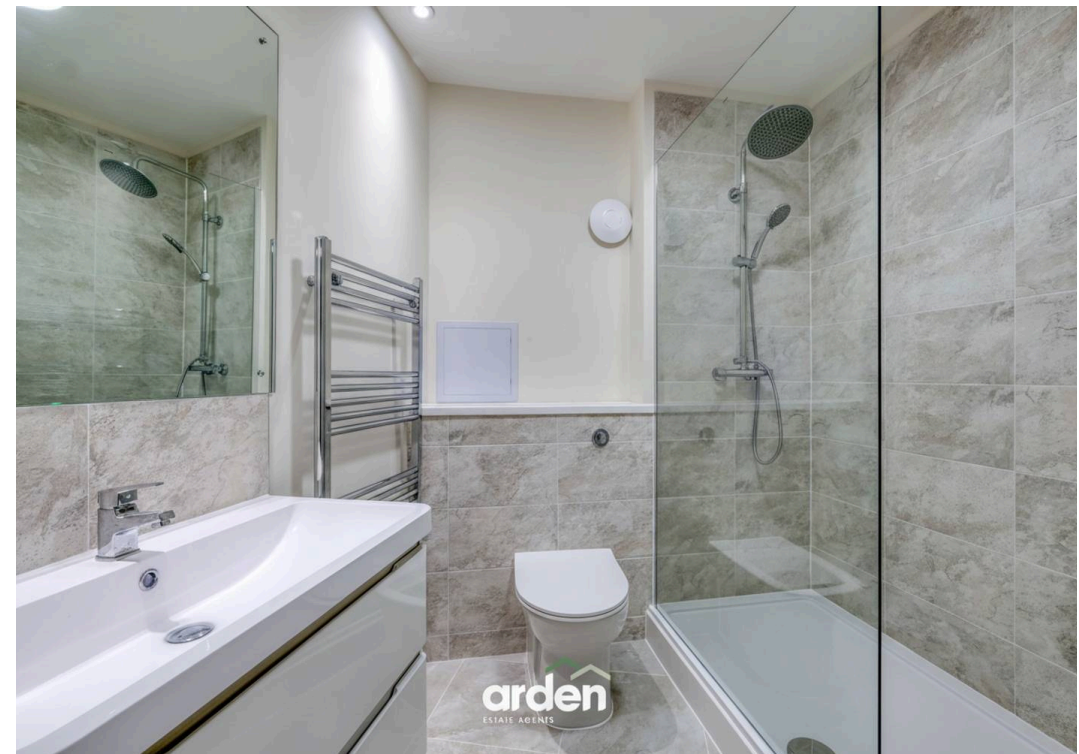
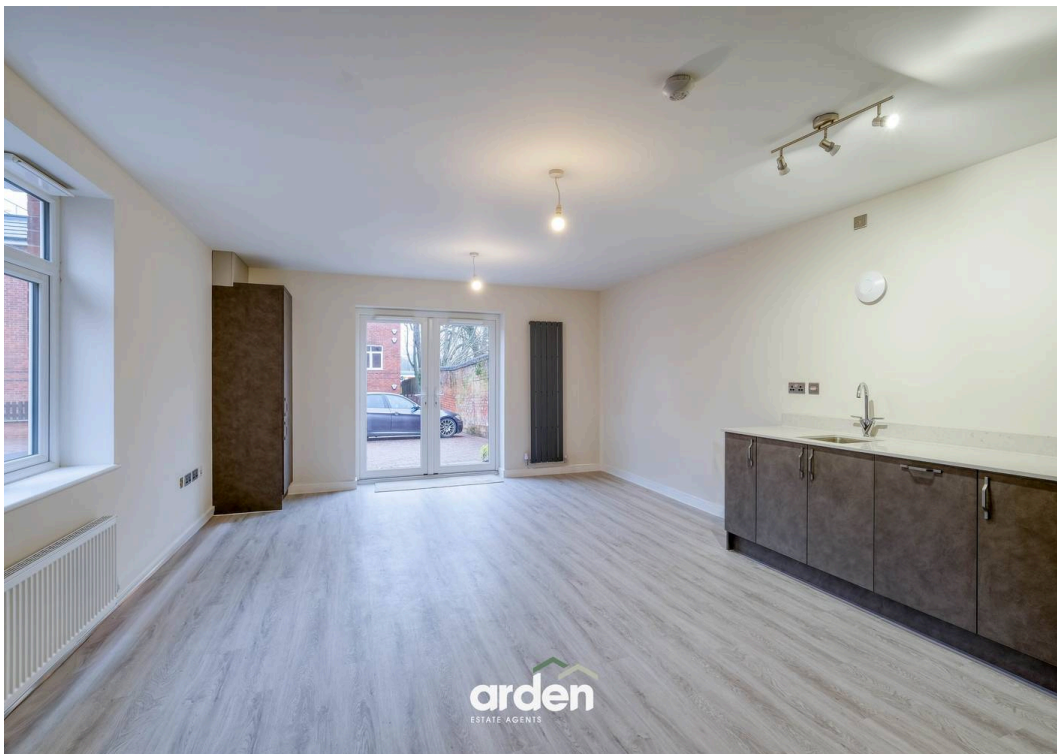
Moseley View is an exclusive new-build development of contemporary one- and two-bedroom apartments, located on Valentine Road just moments from Kings Heath High Street and the railway station.

Council Tax band: TBD

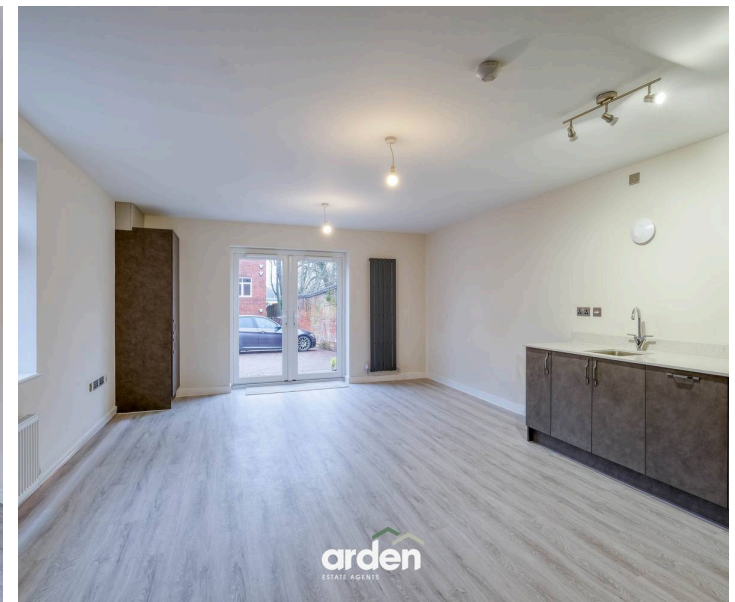
Tenure: Leasehold

- Low Service Charge
- High finish Throughout
- Available to reserve now
- Secure entrance system
- Sought after location
- Excellent transport links
- Brand new development
- Close to amenities





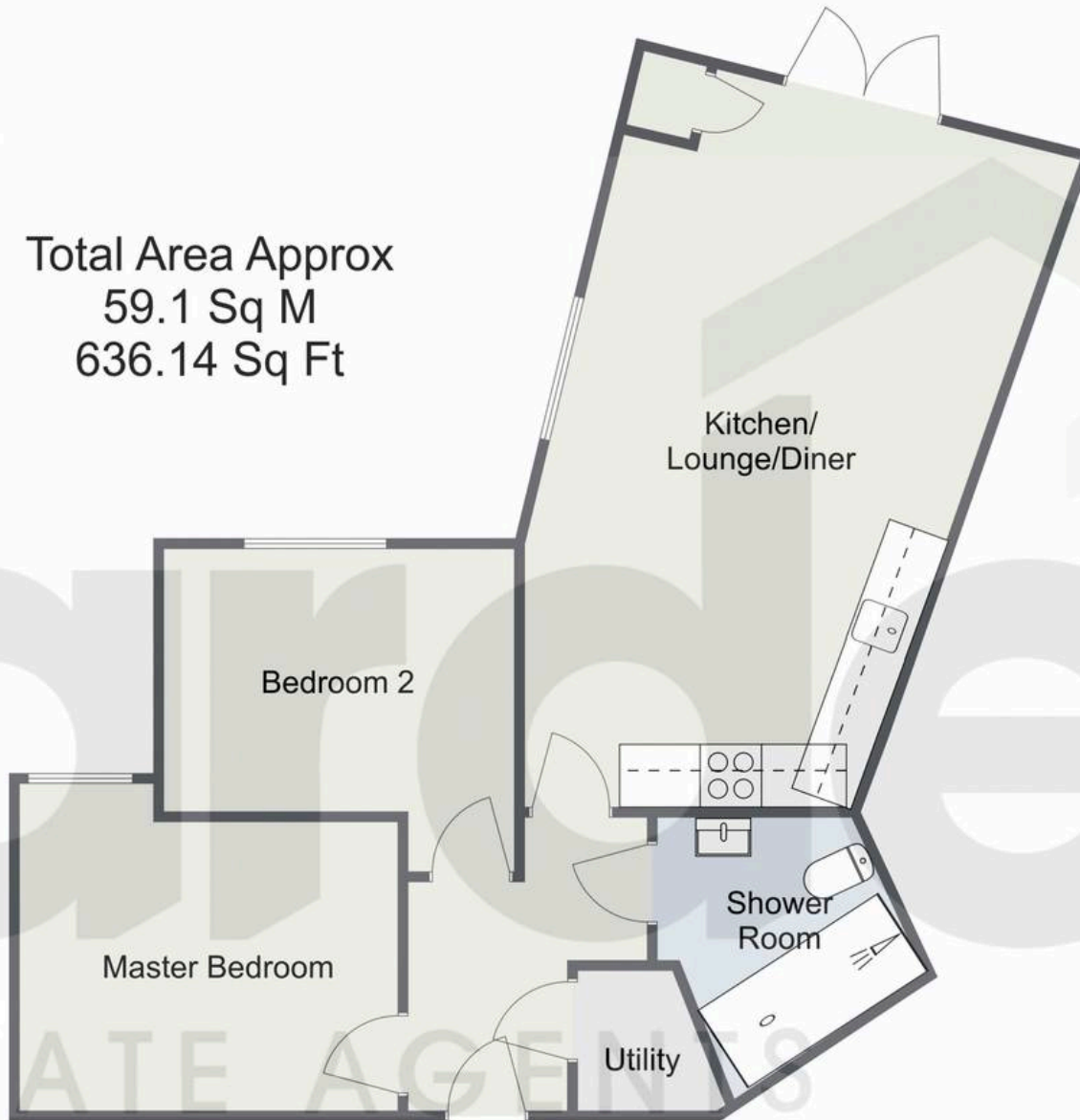
You can include any text here. The text can be modified upon generating your brochure.



# Moseley View, Valentine Road, Birmingham

## Flat 1

Total Area Approx  
59.1 Sq M  
636.14 Sq Ft



For illustrative purposes only. Decorative finishes, fixtures & fittings do not represent the current state of the property. Measurements are approximate & not to scale. Floor Plans made using RoomSketcher.



## Arden Estates

Arden Estates Solihull, 450 Stratford Road, Solihull - B90 4AQ

0121 745 5888 • [solihull@ardenestates.co.uk](mailto:solihull@ardenestates.co.uk) •