



30 Meadow Road, Worcester

Worcester

£325,000

30 Meadow Road

Worcester, Worcester

Council Tax band: C

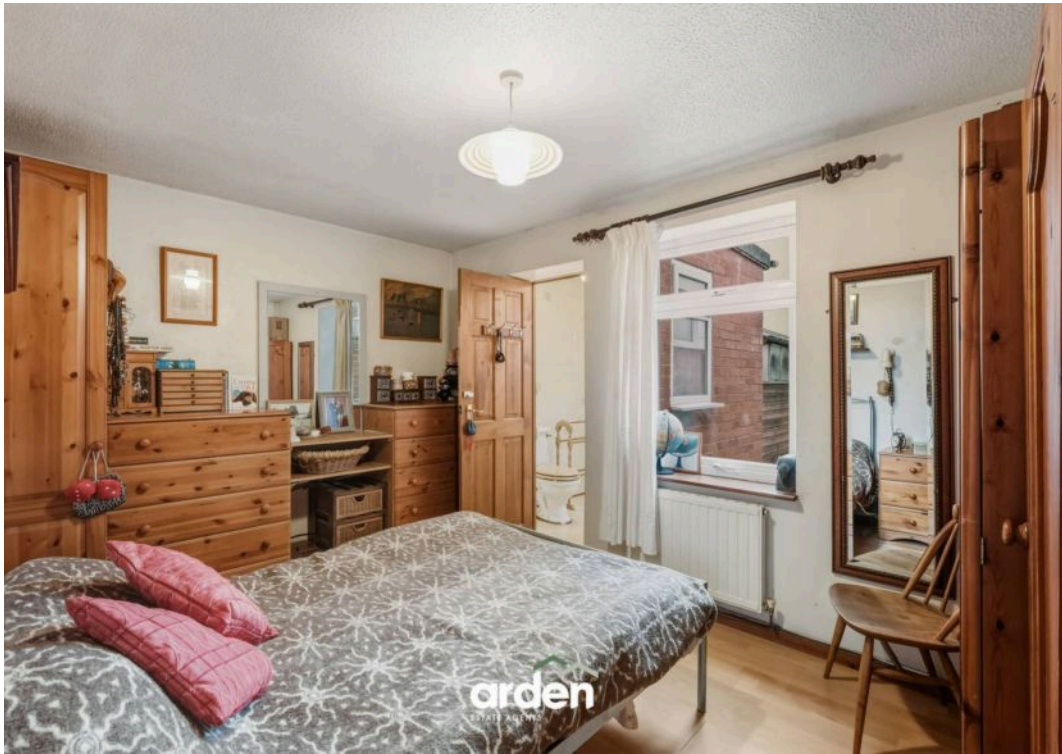
Tenure: Freehold

EPC Energy Efficiency Rating: B

EPC Environmental Impact Rating: B

- Offered With A Complete Onward Chain
- Popular WR3 Postcode
- Detached Bungalow On A Great Plot
- Three Reception Rooms
- Garage & Parking





This two-bedroom detached bungalow is located in the popular WR3 postcode, offering two bathrooms, three reception rooms, off-road parking, and a garage. The property comes to the market with a complete onward chain.

The home offers well-arranged single-storey accommodation, beginning with an entrance hall that leads through to the dining room, from here you have the main lounge living accommodation. From here, double doors open into a sun room, providing a pleasant additional reception space with views over the garden. The property includes two bedrooms, with the main bedroom benefiting from an en-suite shower room, complemented by a separate family bathroom.

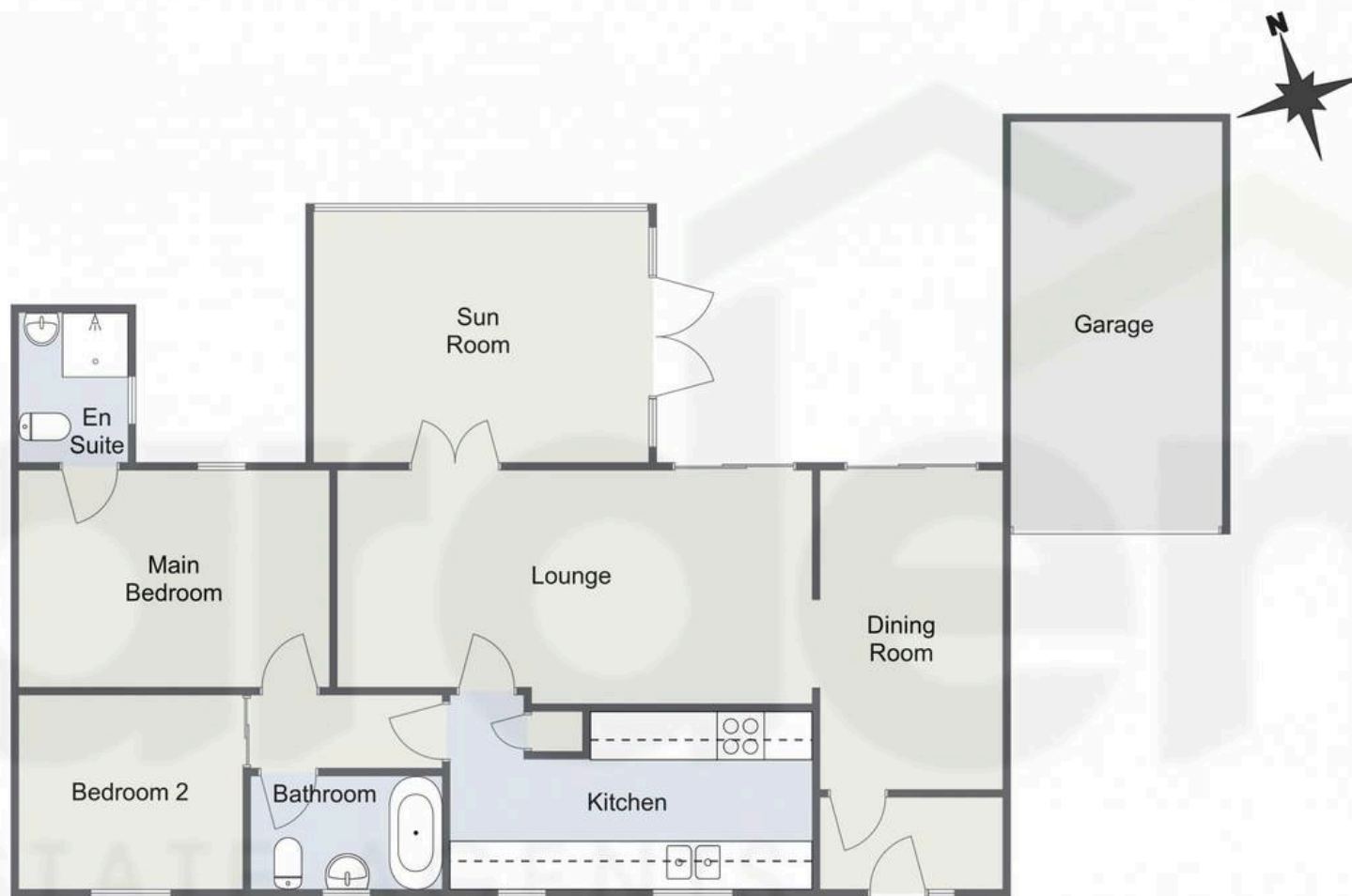
Outside, the private rear garden is divided into two sections. The main garden backs onto open fields and is predominantly laid to lawn, complemented by a patio area ideal for outdoor seating. Beyond a gated access, a further section of the garden is arranged as an orchard and includes a useful shed providing additional storage.

Further advantages include a single garage, off-road parking, and solar panels.



Meadow Road, Worcester

Ground Floor



Total Area Approx
(Incl Garage)
94.2 Sq M
1014.0 Sq Ft

For illustrative purposes only. Decorative finishes, fixtures & fittings do not represent the current state of the property. Measurements are approximate & not to scale.
Floor Plans made using RoomSketcher.



arden
ESTATE AGENTS



Arden Estates

Arden Estate Agents, 15 Foregate Street – WR1 1DB

01905 958 290 • worcester@ardenestates.co.uk •