



29 Gospel Farm Road, Birmingham

Birmingham

£240,000

29 Gospel Farm Road

Birmingham, Birmingham

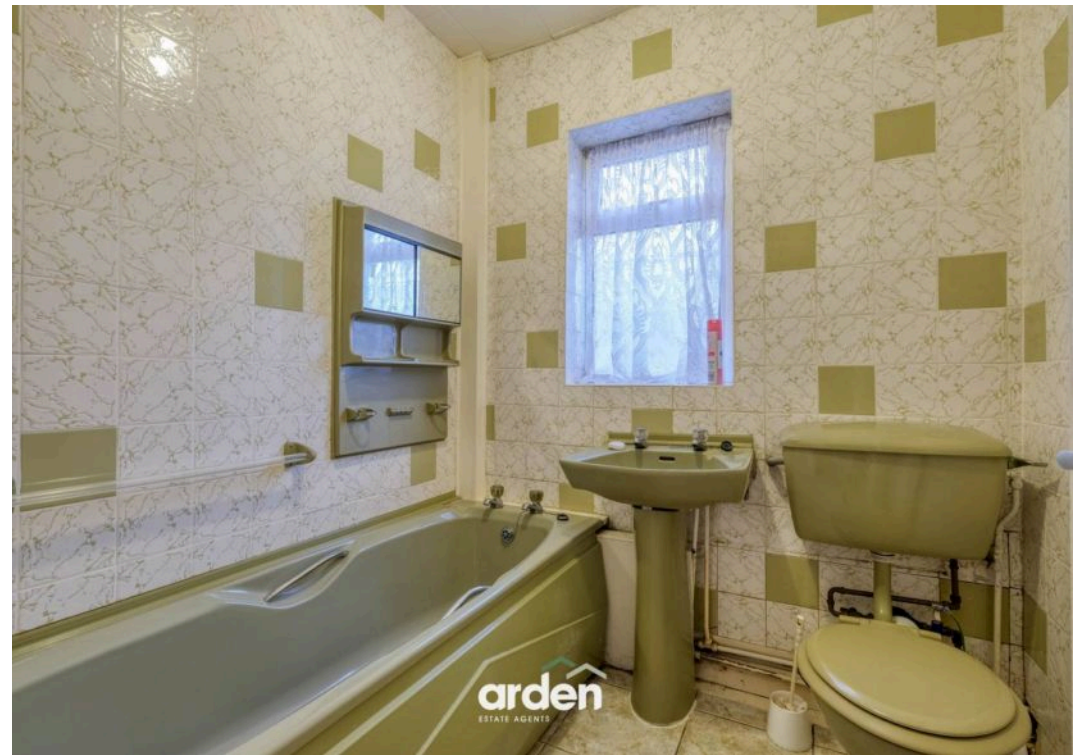
A fantastic opportunity to modernise and add value, this three-bedroom semi-detached home on a desirable corner plot on Gospel Farm Road, Acocks Green, B27.

Council Tax band: B

Tenure: Freehold

- 3-bedroom semi-detached home situated on a generous corner plot
- Located on the sought-after Gospel Farm Road
- Spacious living room with excellent natural light
- kitchen/dining area with access to the rear garden
- Garage plus off-road parking for multiple vehicles
- Well-proportioned bedrooms, ideal for families or first-time buyers
- Private rear garden with potential for further landscaping or extension (STPP)
- Close to local amenities, shops, schools, and transport links
- Quiet residential location with a strong community feel
- Move-in ready with scope to personalise to your taste



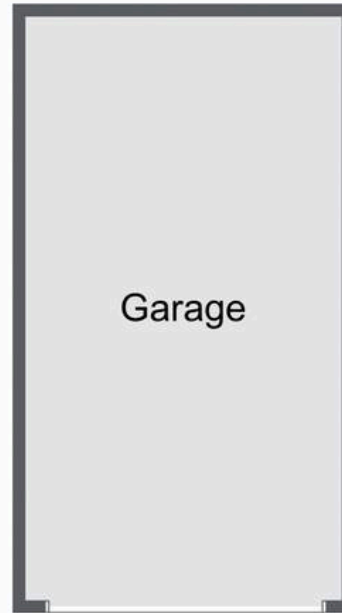
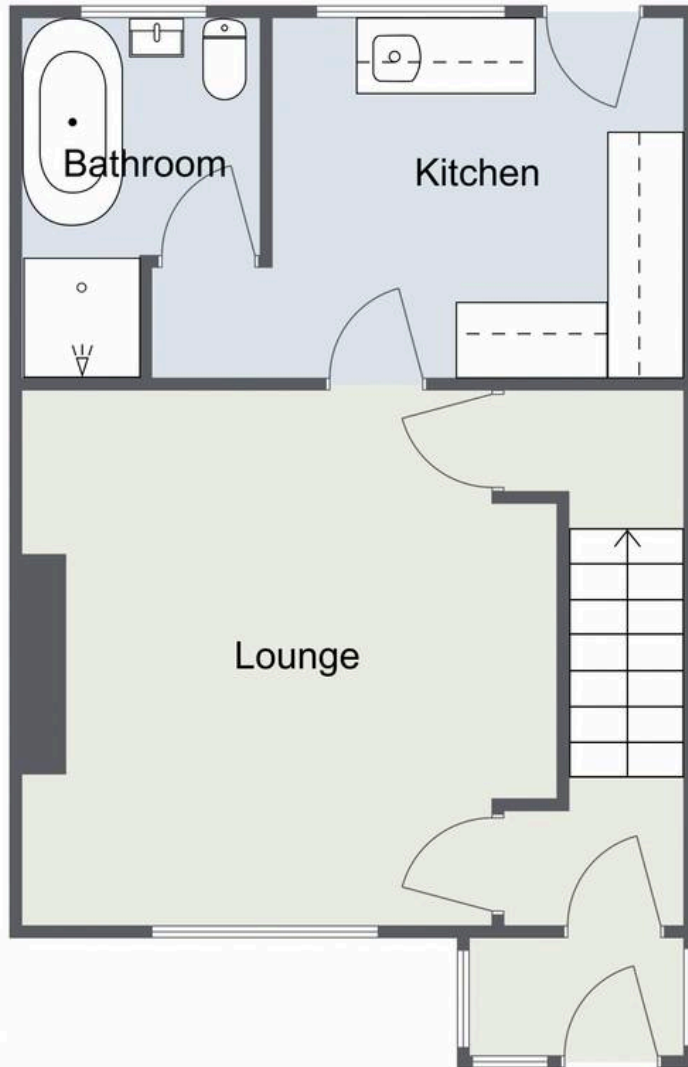


You can include any text here. The text can be modified upon generating your brochure.

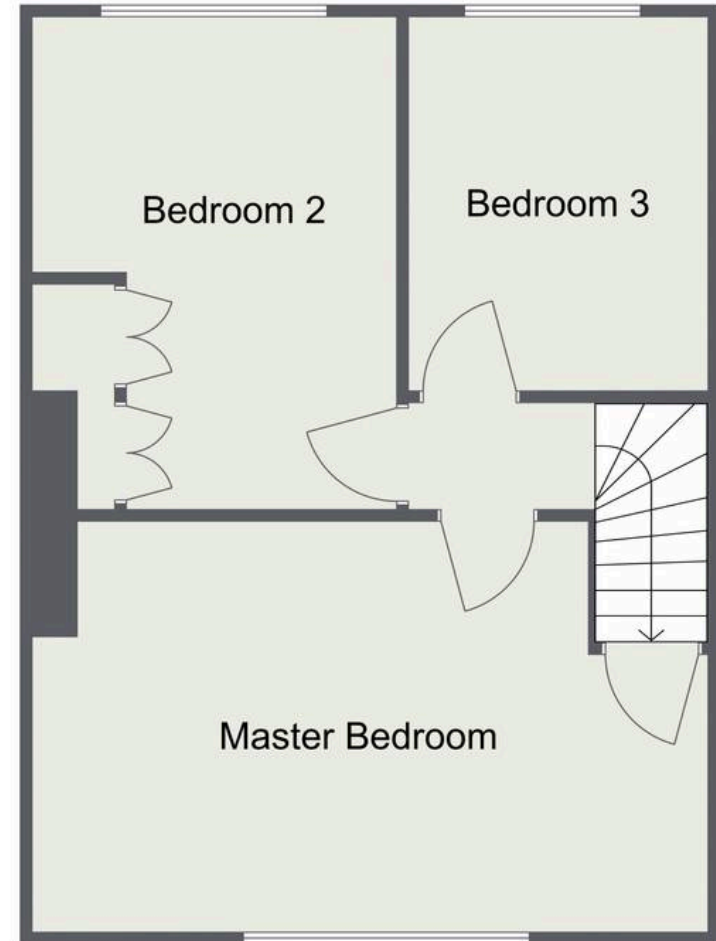


Gospel Farm Road, Acocks Green

Ground Floor



First Floor



Total Area Approx
77.3 Sq M
832.05 Sq Ft
(not including Garage)

For illustrative purposes only. Decorative finishes, fixtures & fittings do not represent the current state of the property. Measurements are approximate & not to scale.
Floor Plans made using RoomSketcher.



Arden Estates

Arden Estates, 14 Old Birmingham Road – B60 1DE

0121 453 4349 • rubery@ardenestates.co.uk •