

14 Bevere Court Northwick Road, Bevere

Worcester

£210,000

14 Bevere Court Northwick Road

Bevere, Worcester

Council Tax band: C

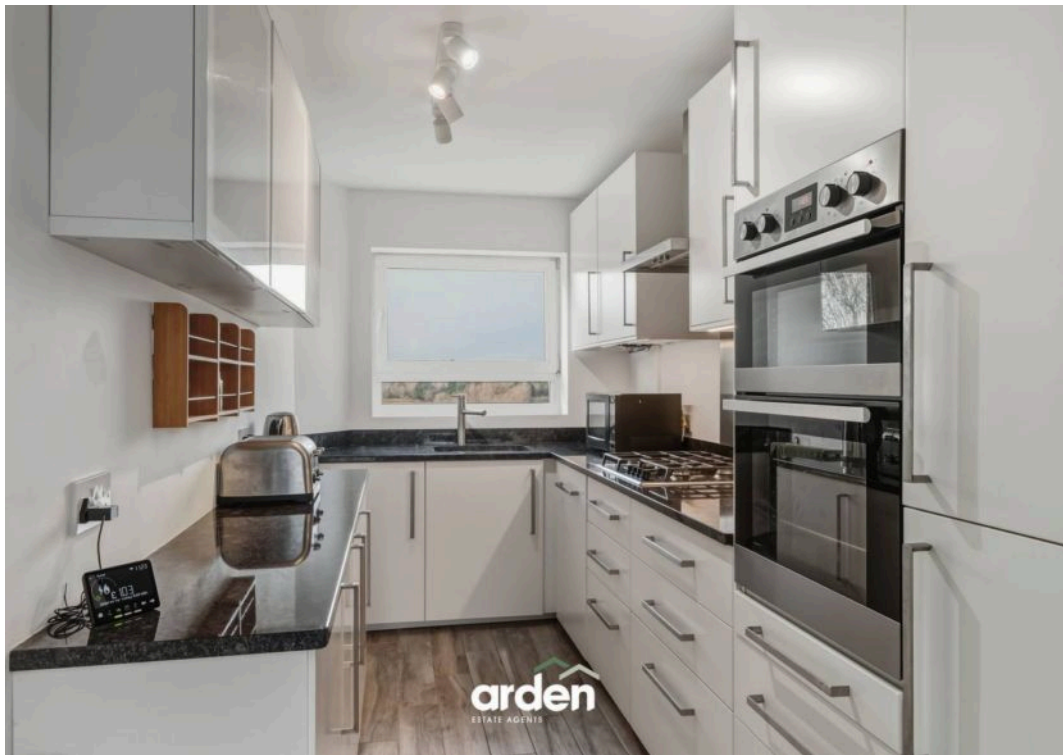
Tenure: Leasehold

EPC Energy Efficiency Rating: C

EPC Environmental Impact Rating: B

- Stunning Views
- Ground Floor Apartment
- Two Double Bedrooms
- Kitchen
- Lounge Diner
- Garage & Parking





You can include any text here. The text can be modified upon generating your brochure.



Bevere Court, Northwick Road, Worcester



Total Area Approx
66.2 Sq M
712.6 Sq Ft

For illustrative purposes only. Decorative finishes, fixtures & fittings do not represent the current state of the property. Measurements are approximate & not to scale. Floor Plans made using RoomSketcher.



Arden Estates

Arden Estate Agents, 15 Foregate Street – WR1 1DB

01905 958 290 • worcester@ardenestates.co.uk •