

5 Harden Court Thorneloe Walk, Worcester

Worcester

£145,000



# 5 Harden Court Thorneloe Walk

Worcester, Worcester

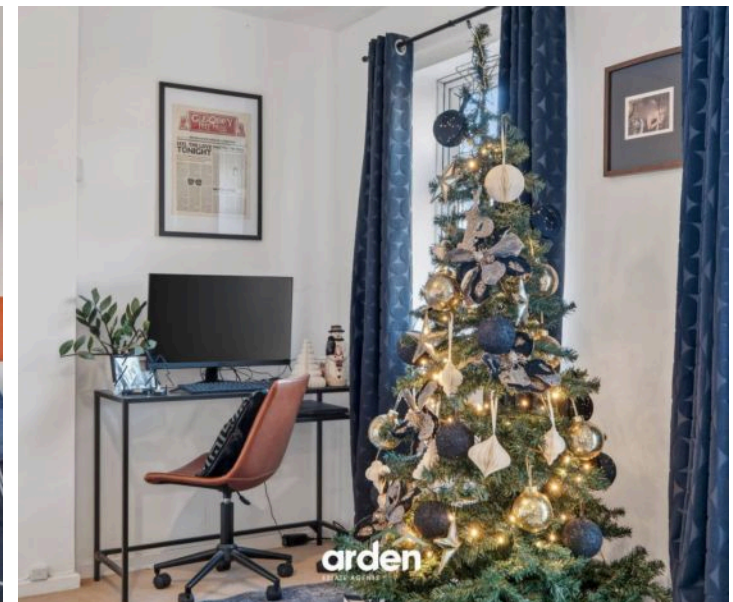
Council Tax band: A

Tenure: Leasehold

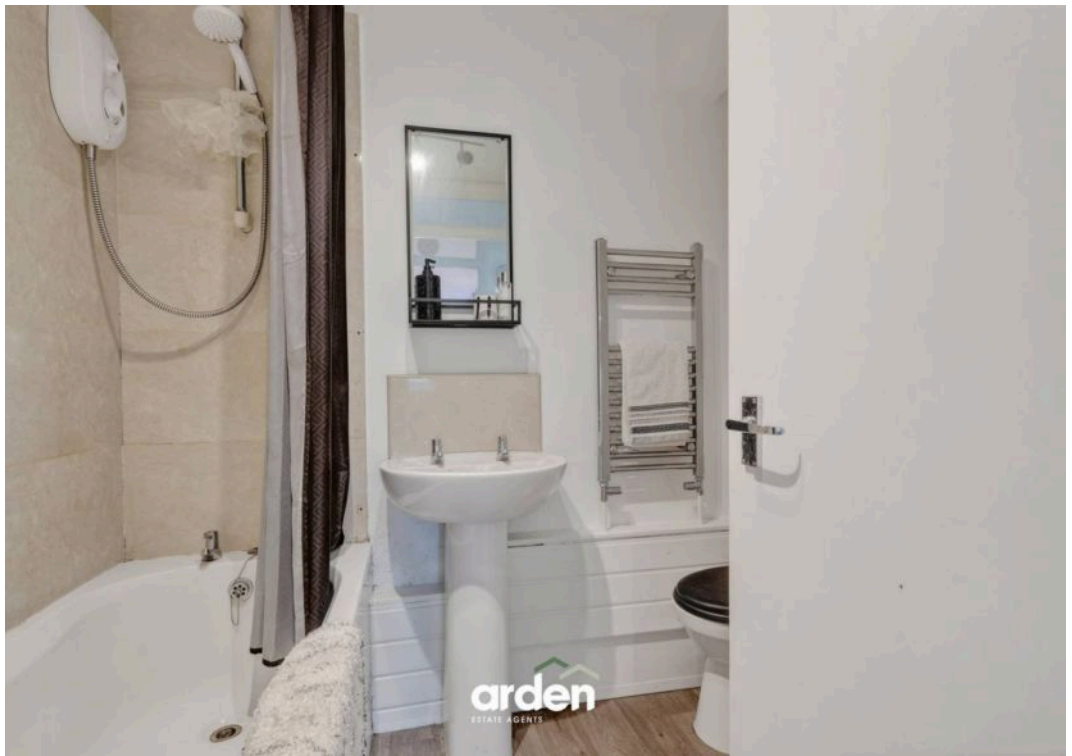
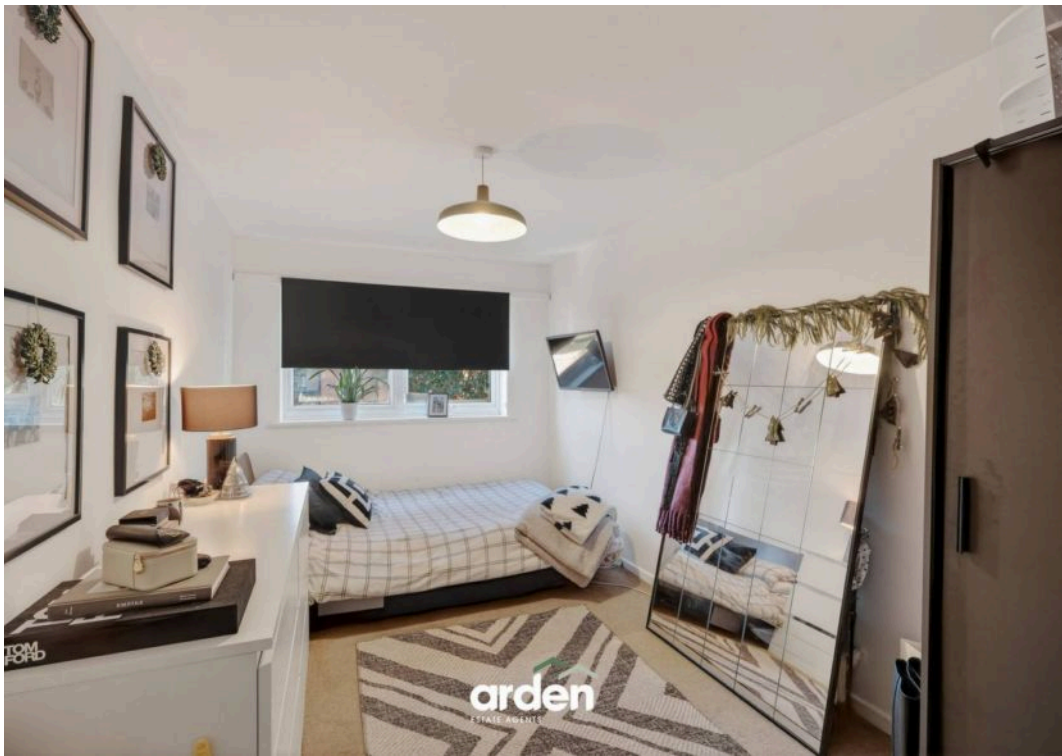
EPC Energy Efficiency Rating: C

EPC Environmental Impact Rating:

- First Floor Apartment
- Walking Distance To The city Centre
- Communal Gardens
- Single Garage & Parking









Welcome to this charming first-floor, one-bedroom apartment, ideally situated within walking distance of the city centre. The property also benefits from a private garage, communal garden space, and convenient on-site parking.

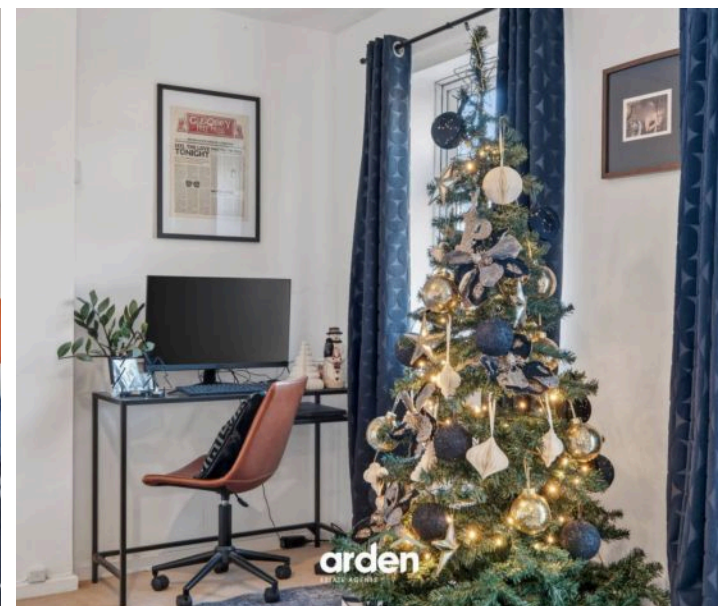
Inside, you'll find a spacious lounge separate from the kitchen. Large windows fill the room with natural light, making it a cosy, welcoming space with enough room to set up a home office, perfect for working from home.

The kitchen offers both base and wall units along with space for a free-standing fridge freezer, washing machine, and cooker.

The apartment includes a comfortable double bedroom and a bathroom equipped with a bath and overhead shower, a basin, and WC.

**Agent Note:** The property has a lease of 106 years remaining approximately, and the service charge is £112 a month, and there is no ground rent, but this information would need to be clarified by your solicitor.

**Location:** Barbourne, a charming suburb of Worcester, offers a blend of historical architecture and modern conveniences, making it an attractive place to live. Residents enjoy access to Gheluvelt Park, a well-maintained green space featuring a children's play area, splash pad, tennis courts, and a sensory garden, perfect for family outings and leisurely strolls. The area boasts a variety of local amenities, including independent shops, cafes, and restaurants, ensuring all necessities are within easy reach, while its proximity to Worcester city centre provides further shopping and dining. Additionally, Barbourne offers excellent schooling options, with well-regarded primary and secondary schools nearby, making it an ideal location for families.



# Harden Court, Thorneloe Walk, Worcester



Total Area Approx  
44.1 Sq M  
474.7 Sq Ft

For illustrative purposes only. Decorative finishes, fixtures & fittings do not represent the current state of the property. Measurements are approximate & not to scale.  
Floor Plans made using RoomSketcher.





## Arden Estates

Arden Estate Agents, 15 Foregate Street – WR1 1DB

01905 958 290 • [worcester@ardenestates.co.uk](mailto:worcester@ardenestates.co.uk) •