



22a Crownhill Meadow, Catshill
Bromsgrove

£425,000



NO ONWARD CHAIN – A well-presented three-bedroom bungalow offering spacious living throughout, situated in Catshill, Bromsgrove. The property features a generous lounge/diner, breakfast kitchen, en-suite to the master bedroom, bathroom, south-facing rear garden, garage and driveway. This home is perfect for those buyers seeking comfortable single-level living in a desirable location.

The property is approached via a driveway offering off-road parking and access to the garage.

Stepping inside, the entrance hallway leads to a generously sized lounge/diner, featuring a fireplace and French doors opening onto the rear garden. Another doorway leads to the breakfast kitchen, complete with an integrated oven, hob and extractor, as well as a dishwasher and fridge/freezer. From here, you can access the lean-to, which also opens out to the rear garden.

Further along the hallway are the sleeping quarters, consisting of three well-proportioned bedrooms. The master bedroom benefits from fitted wardrobes and its own en-suite, while a separate bathroom serves the remaining two bedrooms.

Externally, the property enjoys a south-facing rear garden with a paved patio and a variety of mature shrubs and greenery. The garden is fully enclosed with fenced boundaries, and provides access to the garage.

Situated in the popular Crownhill Meadow development in Catshill, Bromsgrove, this property enjoys a peaceful residential setting just a short distance from Catshill village with its shops, cafés and everyday amenities. The area benefits from excellent transport links, including convenient bus services and nearby motorway connections, making it ideal for commuters while retaining a friendly, community-focused atmosphere.

Room Dimensions:

Garage – 5.54m x 2.54m

Lounge / Diner – 5.76m x 4.56m max

Kitchen / Breakfast Room – 3.67m x 5.76m max

Lean To – 3.48m x 0.94m

Master Bedroom – 4.20m x 3.44m max

Ensuite – 2.37m x 1.49m

Bedroom 2 – 3.83m x 3.13m

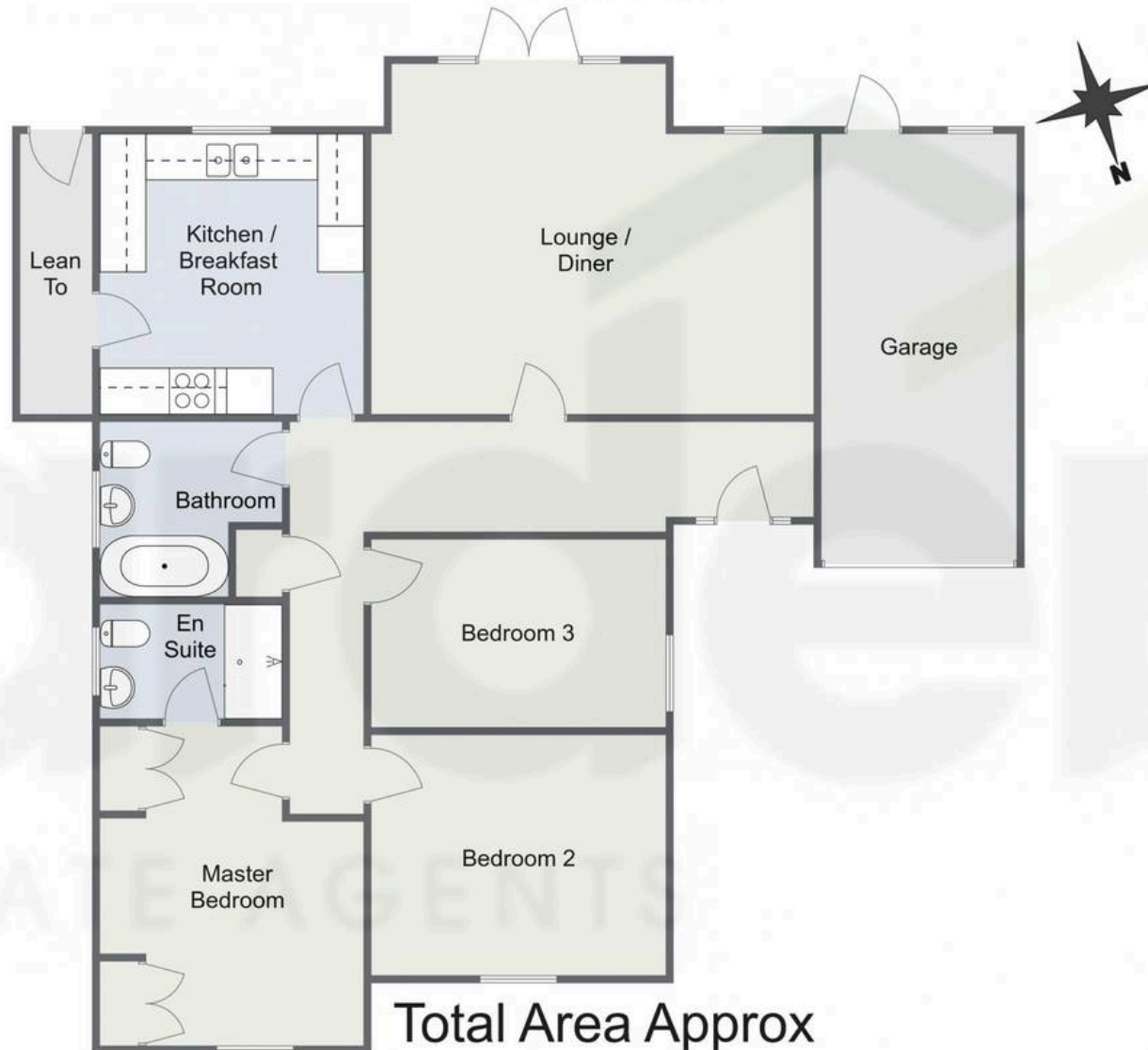
Bedroom 3 – 3.85m x 2.44m

Bathroom – 2.37m x 2.27m max



Crownhill Meadow, Catshill, Bromsgrove

Ground Floor



Total Area Approx
115.0 Sq M
1237.9 Sq Ft

For illustrative purposes only. Decorative finishes, fixtures & fittings do not represent the current state of the property. Measurements are approximate & not to scale. Floor Plans made using RoomSketcher.



Arden Estates Bromsgrove

Arden Estates, 14 Old Birmingham Road - B60 1DE

01527 872 479

bromsgrove@ardenestates.co.uk

ardenestates.co.uk/contact-us/bromsgrove/