

156 Waterside Heights Waterside, Shirley

Solihull

Offers in Region of £195,000

156 Waterside Heights Waterside

Shirley, Solihull

An extremely well-presented 2 bedroom apartment, offered with no onward chain, would be ideal for those looking to combine modern living with an ideal location.

Council Tax band: C

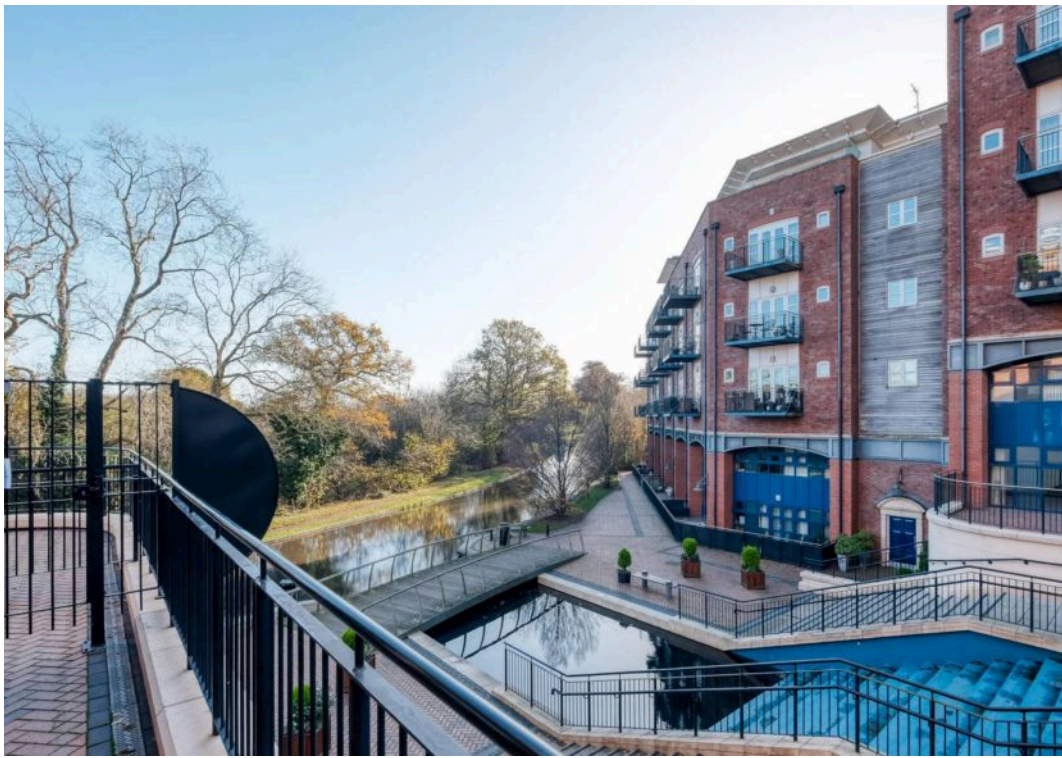
Tenure: Leasehold

EPC Energy Efficiency Rating: B

EPC Environmental Impact Rating: B

- No onward chain
- Excellent local amenities
- Close to commuter links
- Two double bedrooms
- Ensuite to principal bedroom
- Secure underground car parking for one car
- Countryside views
- Turn-key condition
- Quiet residential location

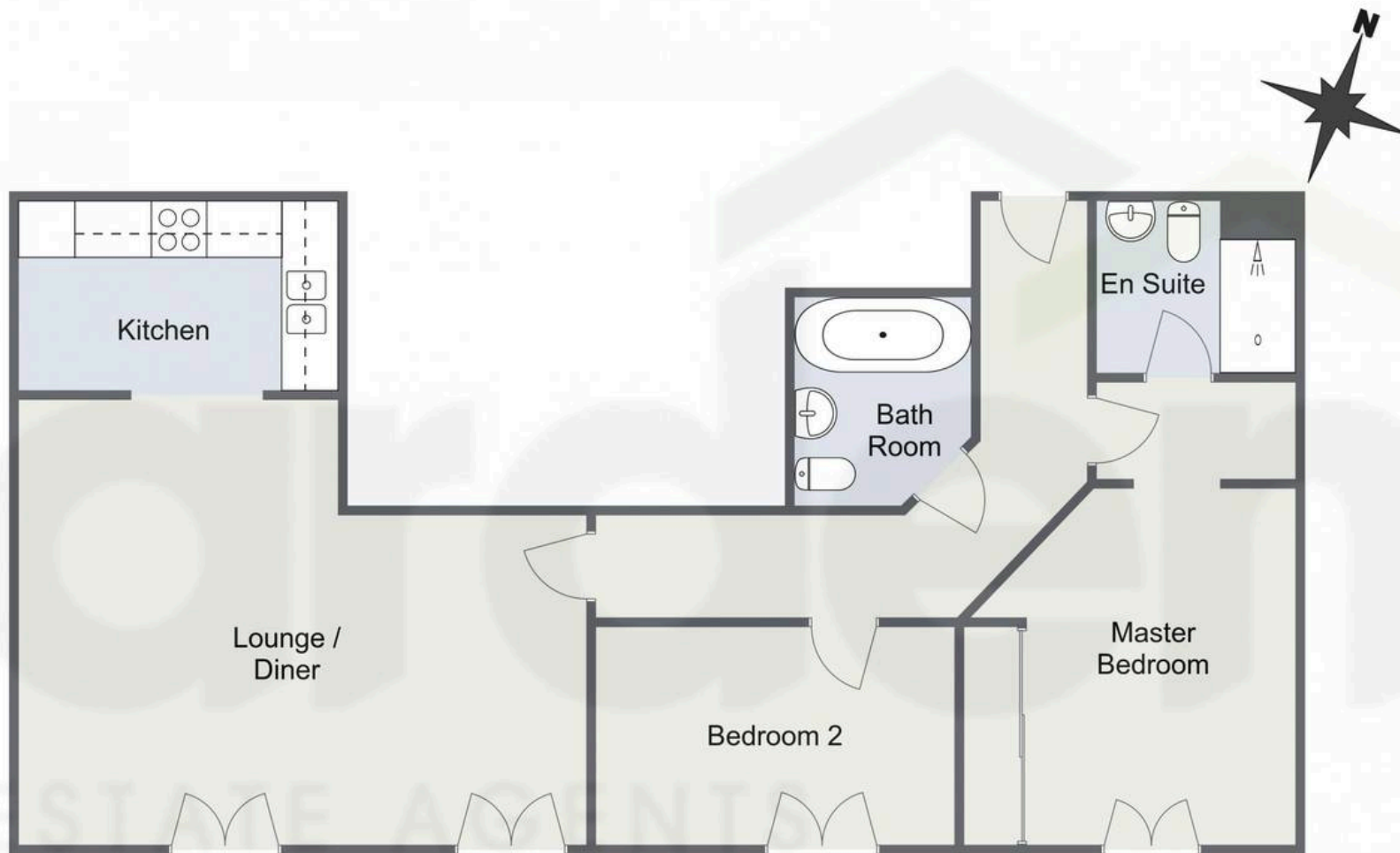




You can include any text here. The text can be modified upon generating your brochure.

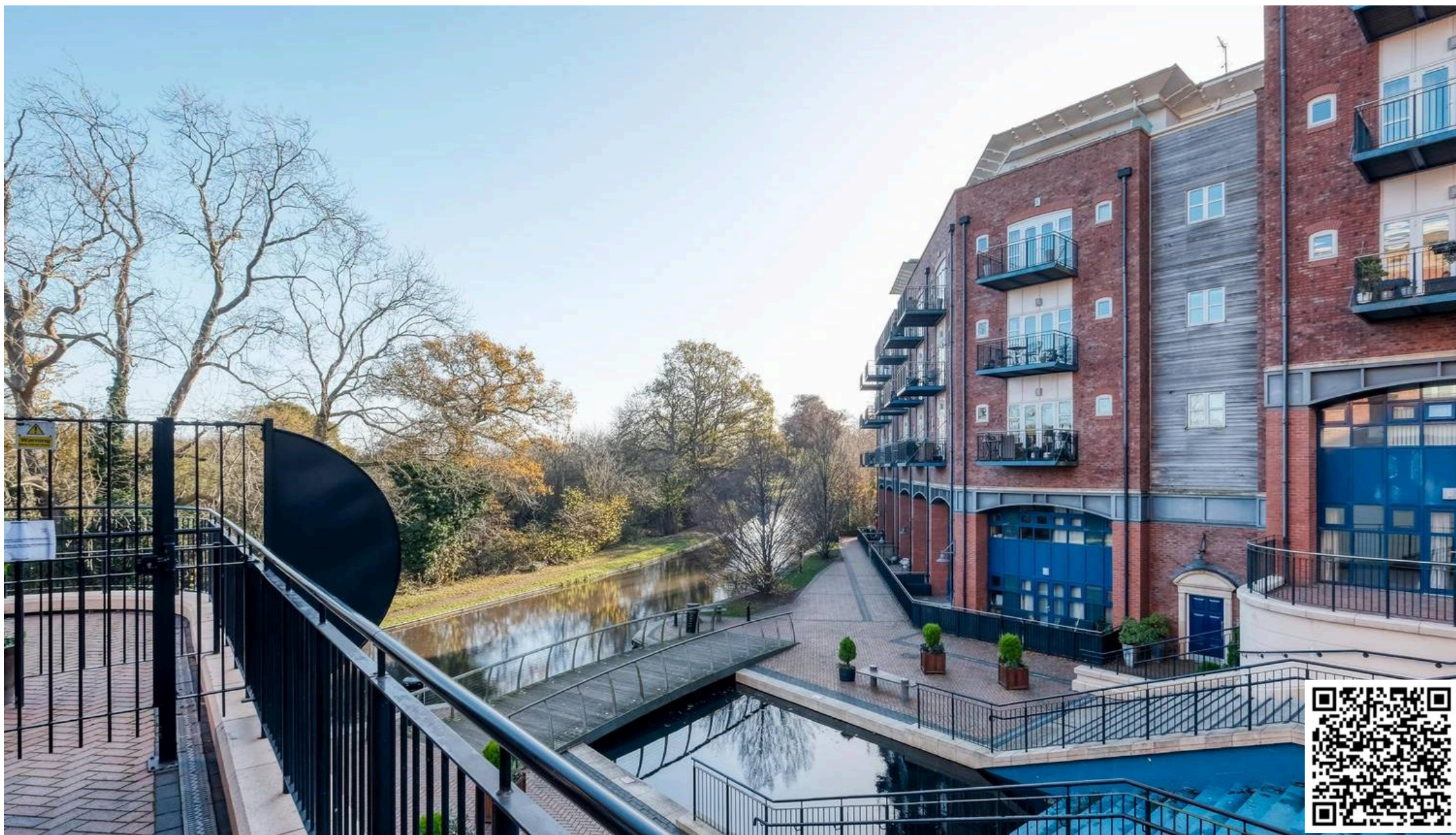


Waterside Heights, Solihull



Total Area Approx
74.5 Sq M
801.9 Sq Ft

For illustrative purposes only. Decorative finishes, fixtures & fittings do not represent the current state of the property. Measurements are approximate & not to scale.
Floor Plans made using RoomSketcher.



Arden Estates

450 Stratford Road, Solihull – B90 4AQ

0121 745 5888 • solihull@ardenestates.co.uk •