



6 Oberon Drive, Shirley

Solihull

£450,000

6 Oberon Drive

Shirley, Solihull

This beautifully presented two bedroom semi-detached bungalow, ideally situated in a highly sought-after area of central Shirley, is perfect for those looking to downsize to their forever home.
Council Tax band: D

Tenure: Freehold

EPC Energy Efficiency Rating: E

EPC Environmental Impact Rating: E

- Extremely well-presented bungalow
- Prime location in the centre of Shirley
- Landscaped garden
- Off-street parking
- Versatile living space
- Utility space
- Additional w/c
- Walking distance to local amenities in the heart of Shirley

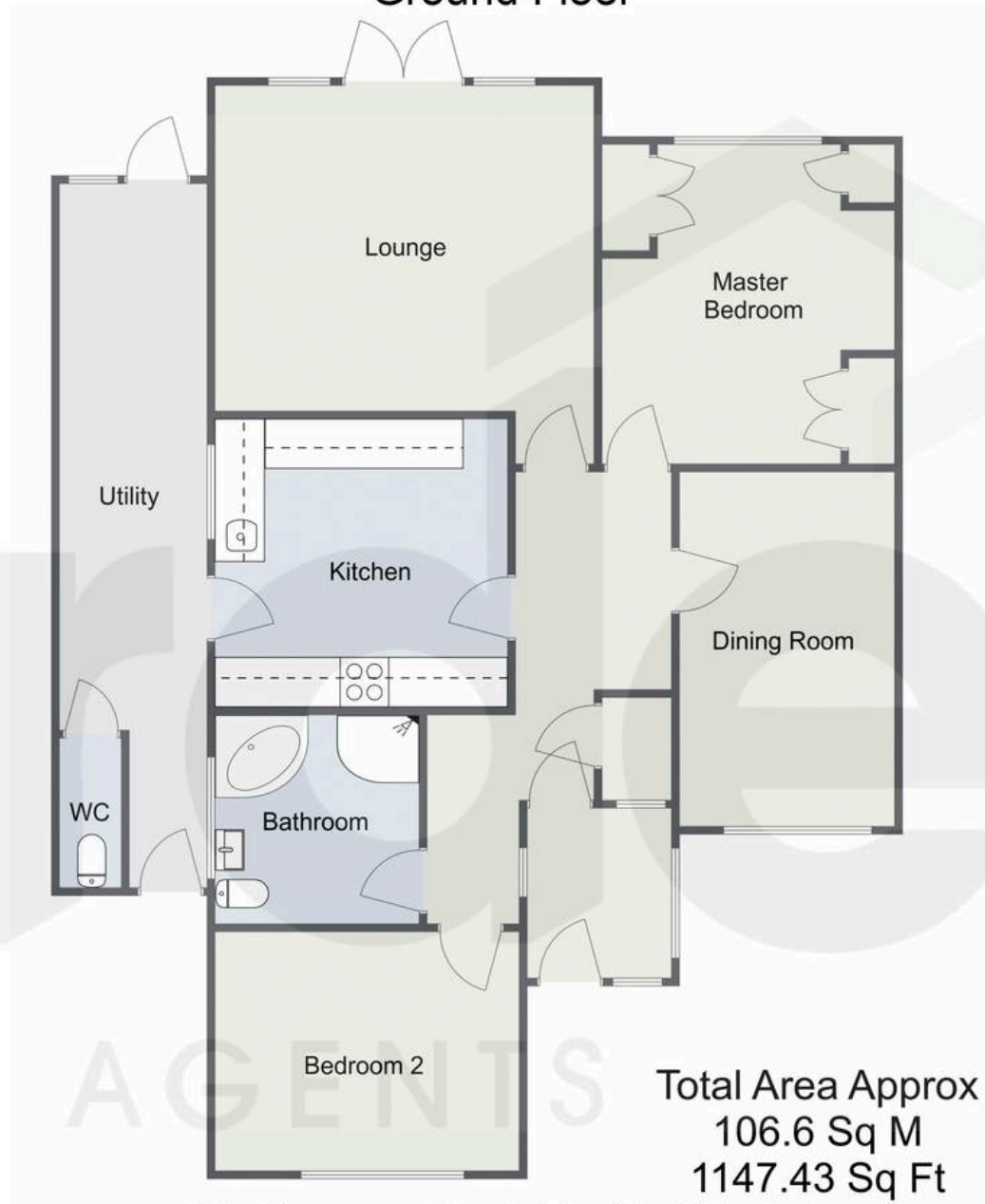




You can include any text here. The text can be modified upon generating your brochure.



Oberon Drive, Shirley Ground Floor



For illustrative purposes only. Decorative finishes, fixtures & fittings do not represent the current state of the property. Measurements are approximate & not to scale.
Floor Plans made using RoomSketcher.



Arden Estates

450 Stratford Road, Solihull - B90 4AQ

0121 745 5888 • solihull@ardenestates.co.uk •