



77 Langdale Drive, Worcester

Worcester

£250,000



# 77 Langdale Drive

Worcester, Worcester

Council Tax band: B

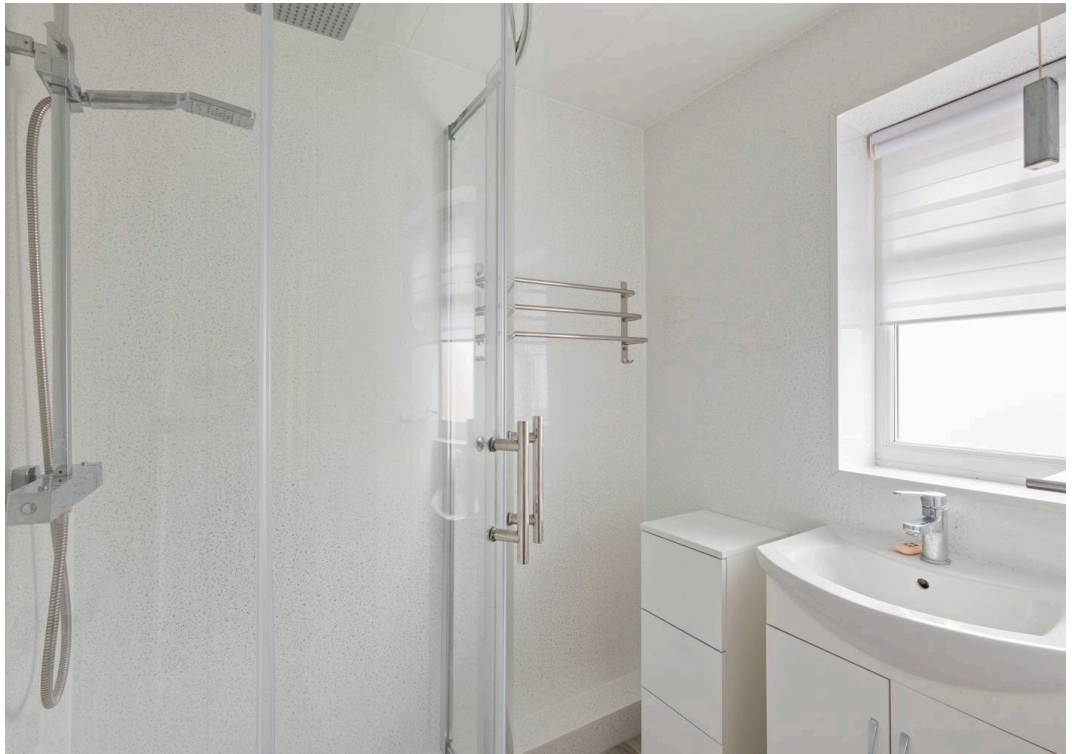
Tenure: Freehold

EPC Energy Efficiency Rating: D

EPC Environmental Impact Rating: E

- End Of Chain
- Move In Ready
- Private Rear Garden
- Three Bedrooms
- WR4 Location







Welcome to this well-proportioned three-bedroom home, situated in the highly sought-after Langdale Drive in Worcester. Neutrally decorated throughout, this property offers spacious living space ideal for families, first-time buyers, or investors. The home further benefits from ample parking and a private rear garden.

The ground floor boasts a spacious, bright living room with French doors opening onto the rear garden. The modern kitchen is fitted with a range of sleek white base and eye-level units, offering plenty of storage. Integrated appliances include an oven, hob, dishwasher, and a washing machine with additional space for an American-style. The kitchen could also accommodate two stools at the breakfast bar.

Upstairs, the property features three well-laid-out bedrooms, each with built-in storage for added convenience. The family bathroom is fitted with a walk-in shower, basin, and WC, while a separate additional WC provides extra practicality, ideal for busy family life.

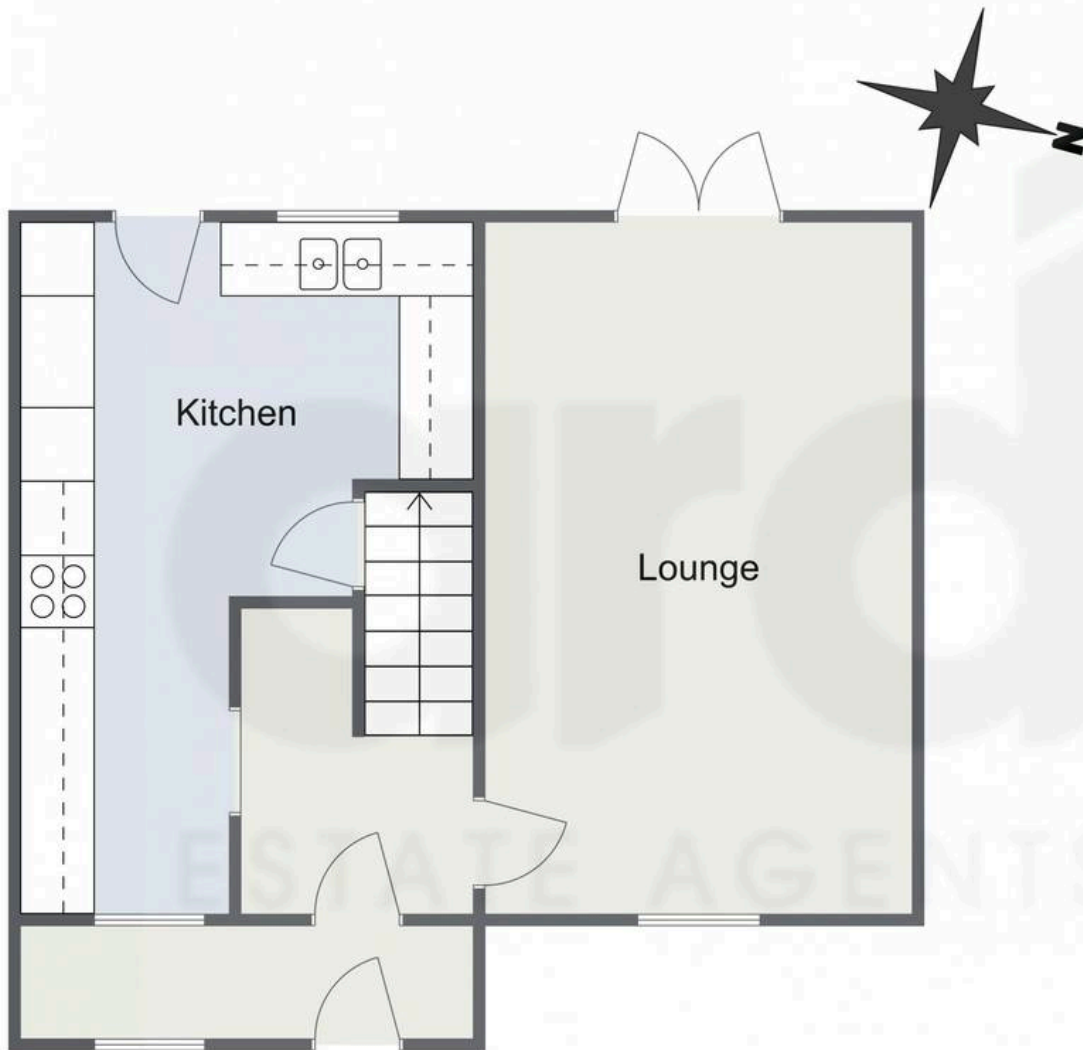
The rear garden offers excellent privacy and features both a patio and a decking area, perfect for outdoor dining and entertaining. The remainder is laid to lawn and includes a large storage shed. To the front of the property, there is ample driveway parking for up to three vehicles, along with side access via a useful lean-to.



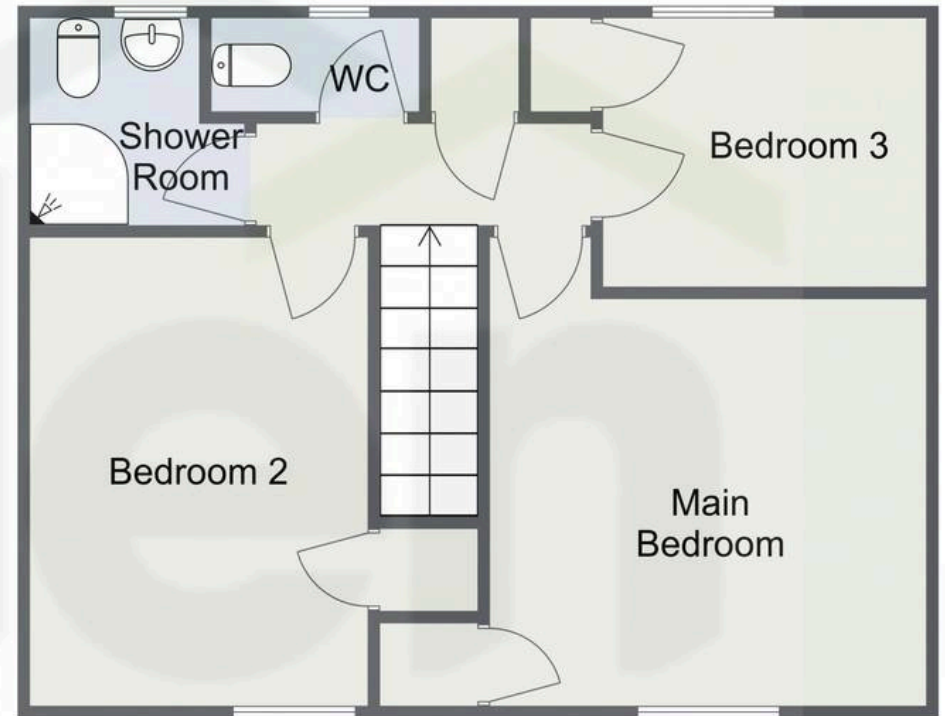


# Langdale Drive, Worcester

Ground Floor



First Floor



Total Area Approx  
85.8 Sq M  
923.5 Sq Ft

For illustrative purposes only. Decorative finishes, fixtures & fittings do not represent the current state of the property. Measurements are approximate & not to scale. Floor Plans made using RoomSketcher.





## Arden Estates

Arden Estate Agents, 15 Foregate Street - WR1 1DB

01905 958 290 • [worcester@ardenestates.co.uk](mailto:worcester@ardenestates.co.uk) •