

272 Dickens Heath Road, Shirley

Solihull

£850,000

272 Dickens Heath Road

Shirley, Solihull

This beautifully presented Four Bedroom Dormer bungalow in the sought-after Dickens Heath area offering generous living space and a stunning wrap-around garden.

Council Tax band: G

Tenure: Freehold

- Spacious four-bedroom dormer bungalow with versatile accommodation
- Four bathrooms including two en-suites and a family bathroom
- Beautifully maintained wrap-around garden offering privacy and multiple outdoor seating areas
- Large lounge with direct access to the garden
- Separate sitting room and dining room for flexible living and entertaining
- Bright conservatory overlooking the garden, perfect for relaxation
- Well-equipped kitchen/breakfast room with ample storage and workspace
- Ground floor bedroom with en-suite, ideal for guests or multi-generational living
- Detached garage and private driveway providing ample parking space
- Located in the highly desirable Dickens Heath area, close to local amenities and transport links





You can include any text here. The text can be modified upon generating your brochure.

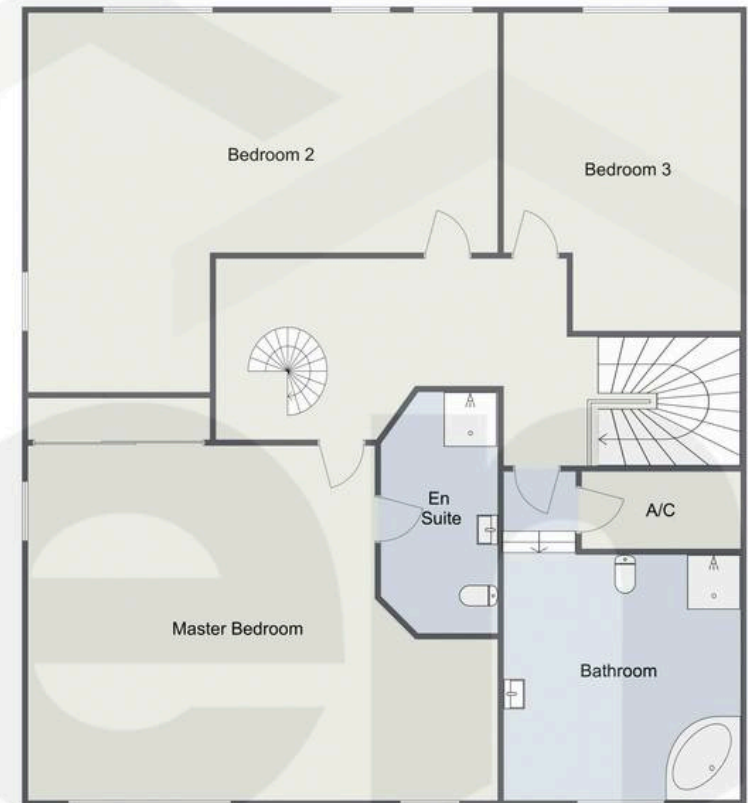


Dickens Heath Road, Solihull

Ground Floor



First Floor



Total Area Approx
331.8 Sq M
3571.46 Sq Ft
(not including Garage)

For illustrative purposes only. Decorative finishes, fixtures & fittings do not represent the current state of the property. Measurements are approximate & not to scale. Floor Plans made using RoomSketcher.



Arden Estates

450 Stratford Road, Solihull – B90 4AQ

0121 745 5888 • solihull@ardenestates.co.uk •