



8 Charlecote Croft, Shirley

Solihull

In Excess of £425,000

8 Charlecote Croft

Shirley, Solihull

Set on a quiet cul-de-sac in the highly sought-after area of Shirley, this beautifully extended semi-detached home offers spacious, modern living throughout.

Council Tax band: D

Tenure: Freehold

- Stunning Breakfast Kitchen with High-Spec Appliances
- Driveway and E.V Charging Point
- Quiet cul-de-sac location in Shirley
- Landscaped South Facing Garden
- Downstairs W.C.
- Contemporary Family Bathroom
- Bright conservatory with Garden Views
- Close Proximity to Local Amenities
- Nearby to Well Regarded Schools



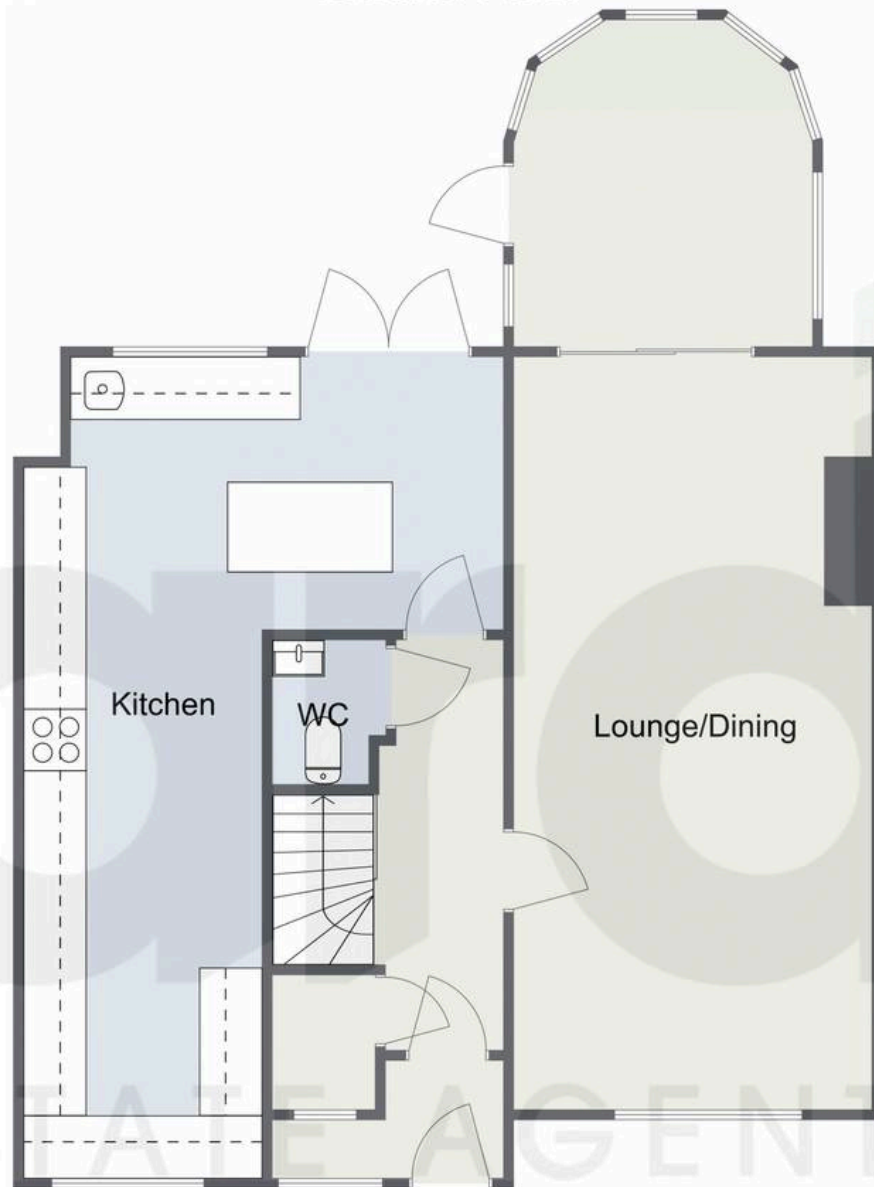


You can include any text here. The text can be modified upon generating your brochure.



Charlecote Croft, Solihull

Ground Floor



First Floor



Total Area Approx
108.9 Sq M
1172.18 Sq Ft

For illustrative purposes only. Decorative finishes, fixtures & fittings do not represent the current state of the property. Measurements are approximate & not to scale. Floor Plans made using RoomSketcher.



Arden Estates

450 Stratford Road, Solihull - B90 4AQ

0121 745 5888 • solihull@ardenestates.co.uk •