



22 Loynells Road, Rednal – B45 9NP

3 Bedroom, Semi Detached Property

0121 453 4349 • rubery@ardenstates.co.uk •



A neatly presented three-bedroom home, ideally located in the heart of Rednal, Birmingham, offered with a kitchen, two reception rooms, family bathroom, utility room, low-maintenance rear garden, driveway, and garage.

The property is approached via a driveway providing off-road parking and direct access to the garage.

Upon entering the welcoming hallway, you'll find a door leading into the dining room, featuring a charming bay window and a feature fireplace. A further doorway opens into the lounge, which boasts French doors leading out to the rear garden, flooding the space with natural light. To the rear of the property is a kitchen, complete with integrated oven, hob, extractor fan, and dishwasher, as well as a Velux window for added light. From the kitchen, a door leads into the utility room, which also offers additional French doors opening onto the rear garden.

Upstairs, the first-floor landing gives access to three well-proportioned bedrooms. The master bedroom features a bay window, adding character and space. There is also a second double bedroom, a third single bedroom, and a family bathroom, fitted with a bathtub and a separate shower enclosure.



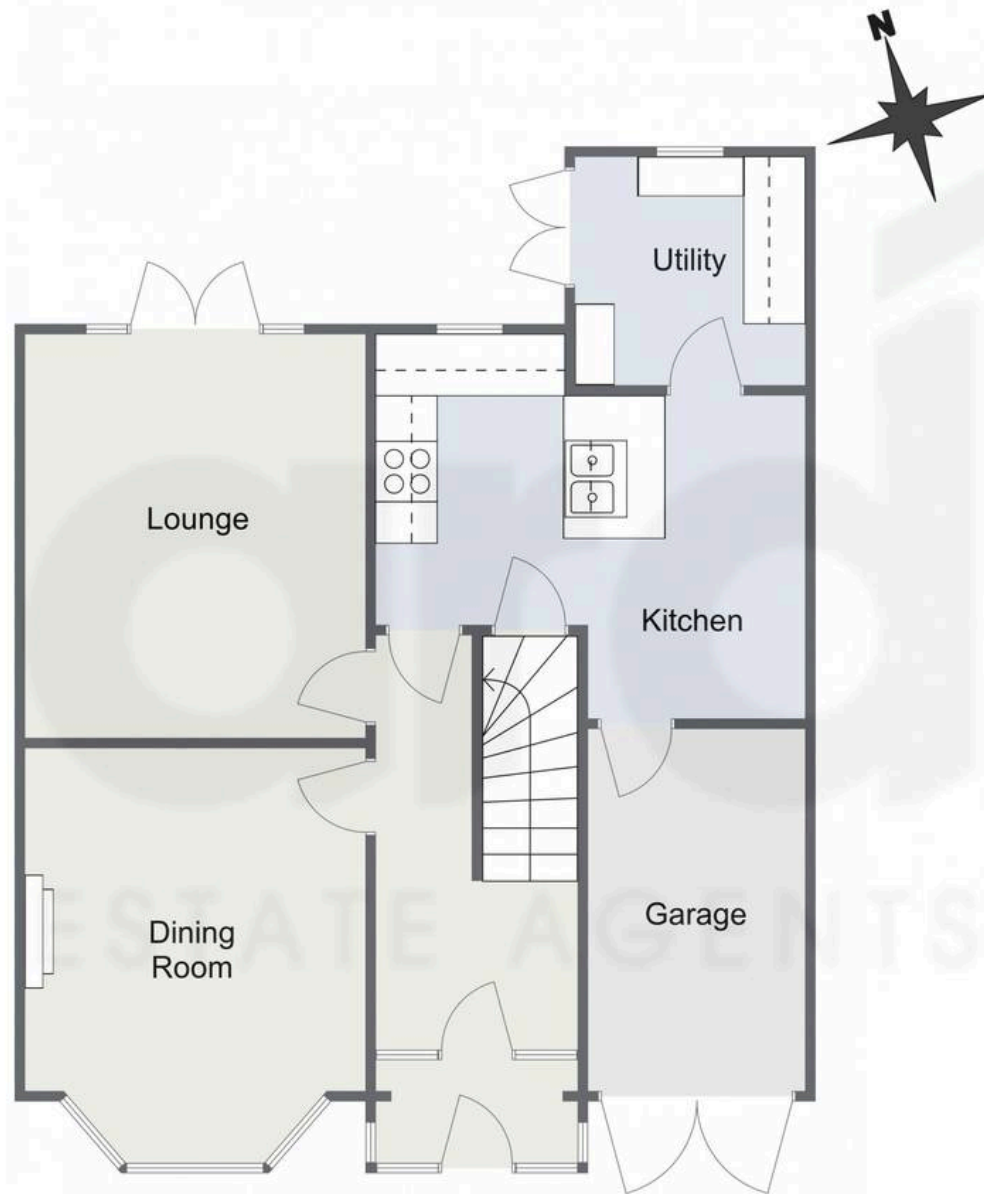
Externally, the property enjoys a low-maintenance rear garden, offering a mix of paved patio and lawn, with fenced boundaries.

Rednal is a well-established area with a friendly community, excellent transport links—including nearby Longbridge Train Station—and proximity to major road networks like the M5 and A38, making it ideal for commuters. The area boasts a range of good schools, local shops, cafes, and is just a short drive from the Longbridge Town Centre and Rubery Village.

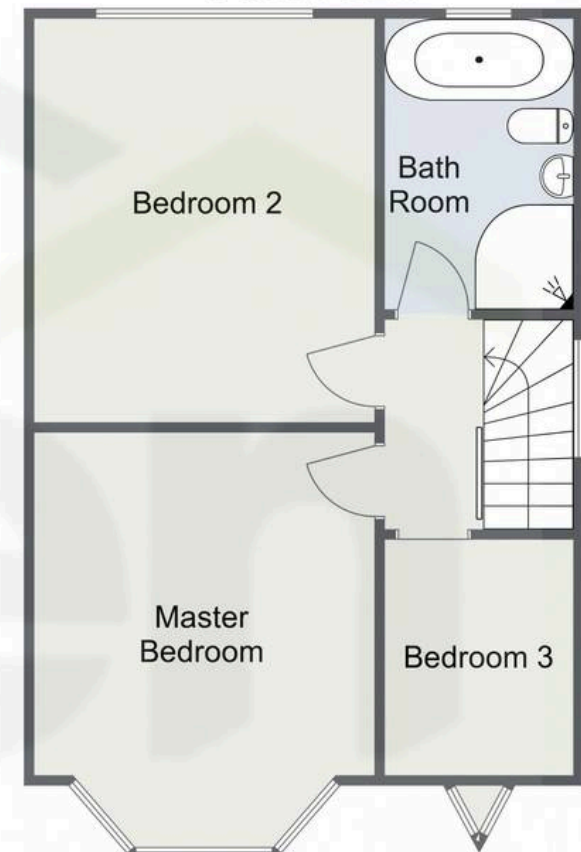




Loynells Road, Rednal, Birmingham
Ground Floor



First Floor



Total Area Approx
103.4 Sq M
1113.0 Sq Ft

For illustrative purposes only. Decorative finishes, fixtures & fittings do not represent the current state of the property. Measurements are approximate & not to scale.
Floor Plans made using RoomSketcher.



Arden Estates

Arden Estates, 14 Old Birmingham Road – B60 1DE

0121 453 4349 • rubery@ardenestates.co.uk •