



30 Chivington Close, Shirley

Solihull

Offers Over £375,000

30 Chivington Close

Shirley, Solihull

We are pleased to present this Immaculately Presented Two Bedroom Semi-Detached Home in Desirable Monkspath, B90.

Council Tax band: C

Tenure: Freehold

EPC Energy Efficiency Rating: C

EPC Environmental Impact Rating: C

- Immaculately Presented Throughout
- Sought-After Location
- Luxury Karndean Flooring
- Remote-Controlled Blackout Blinds
- Pre-approved planning permission to add third bedroom
- Stylish Open-Plan Kitchen Diner
- Two Generous Double Bedrooms
- Modern Family Bathroom
- Private, Well-Maintained Garden
- Driveway Parking for Two Cars

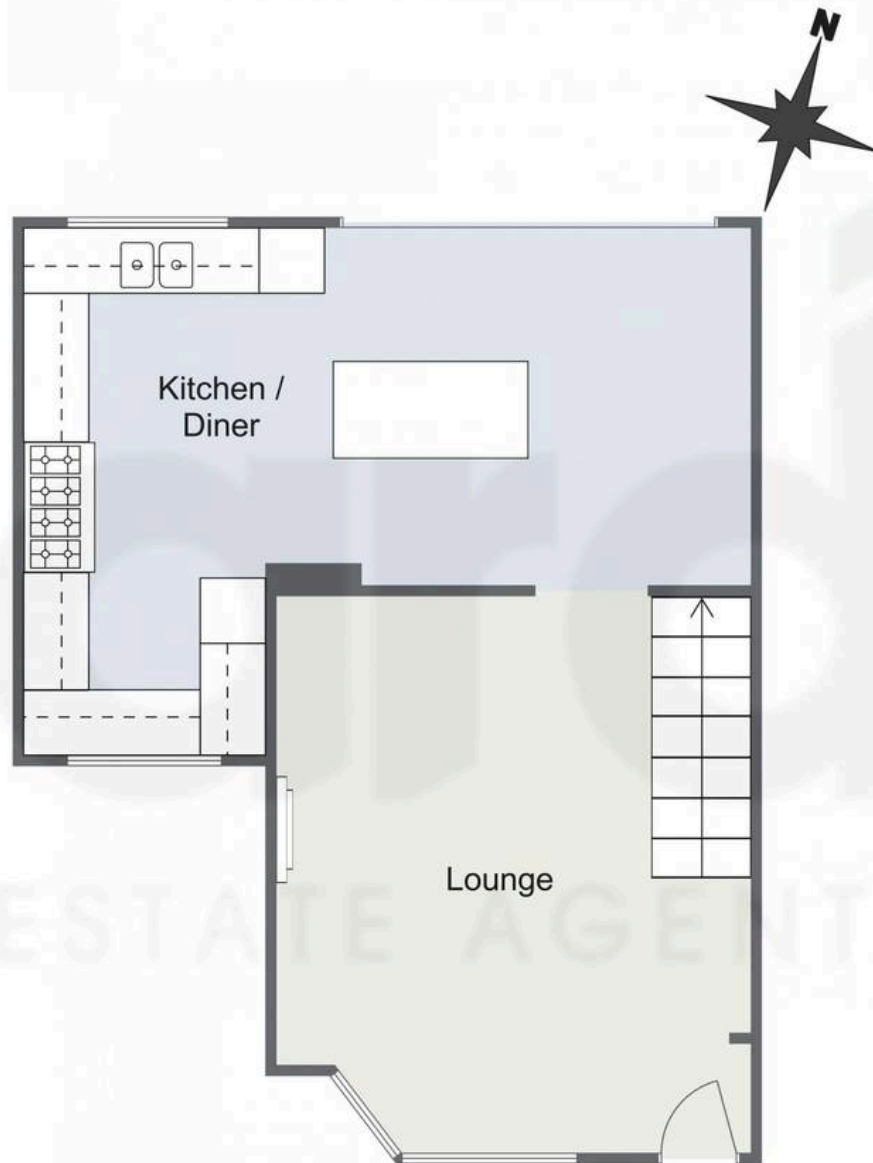




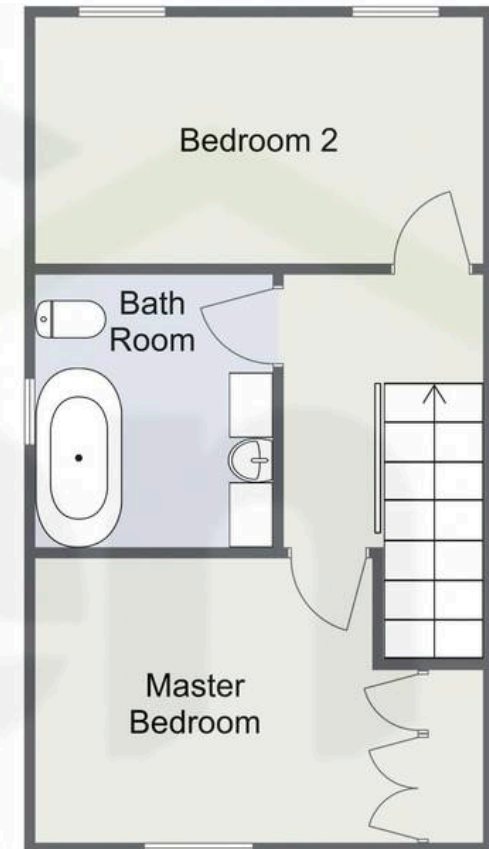
You can include any text here. The text can be modified upon generating your brochure.



Chivington Close, Solihull
Ground Floor



First Floor



Total Area Approx
78.9 Sq M
849.3 Sq Ft

For illustrative purposes only. Decorative finishes, fixtures & fittings do not represent the current state of the property. Measurements are approximate & not to scale. Floor Plans made using RoomSketcher.



Arden Estates

450 Stratford Road, Solihull - B90 4AQ

0121 745 5888 • solihull@ardenestates.co.uk •