



3 The Dingle, Cheswick Green

Solihull

£375,000



### 3 The Dingle

Cheswick Green, Solihull

This beautifully presented three-bedroom family home offers spacious and versatile accommodation over two floors, situated in the desirable area of Cheswick Green.

Council Tax band: D

Tenure: Freehold

EPC Energy Efficiency Rating: D

EPC Environmental Impact Rating: E

- Spacious Open-Plan Kitchen/Diner/Family Room
- Three Well-Proportioned Bedrooms
- Dedicated Home Office
- Generous Lounge with Natural Light
- Utility Room with Downstairs WC
- Contemporary Family Bathroom
- Large Enclosed Rear Garden
- Sliding Doors to Garden
- Ample Storage Space
- Desirable Location







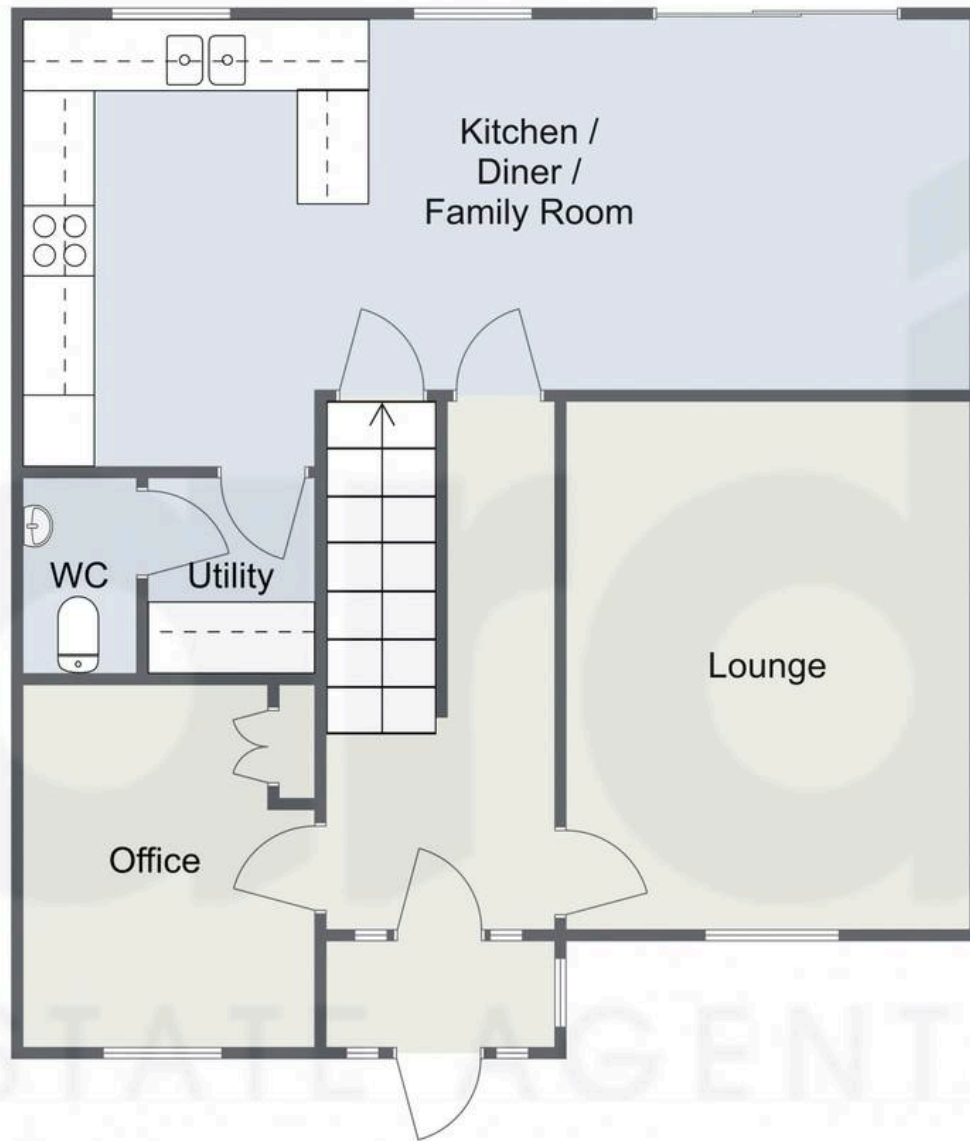


You can include any text here. The text can be modified upon generating your brochure.

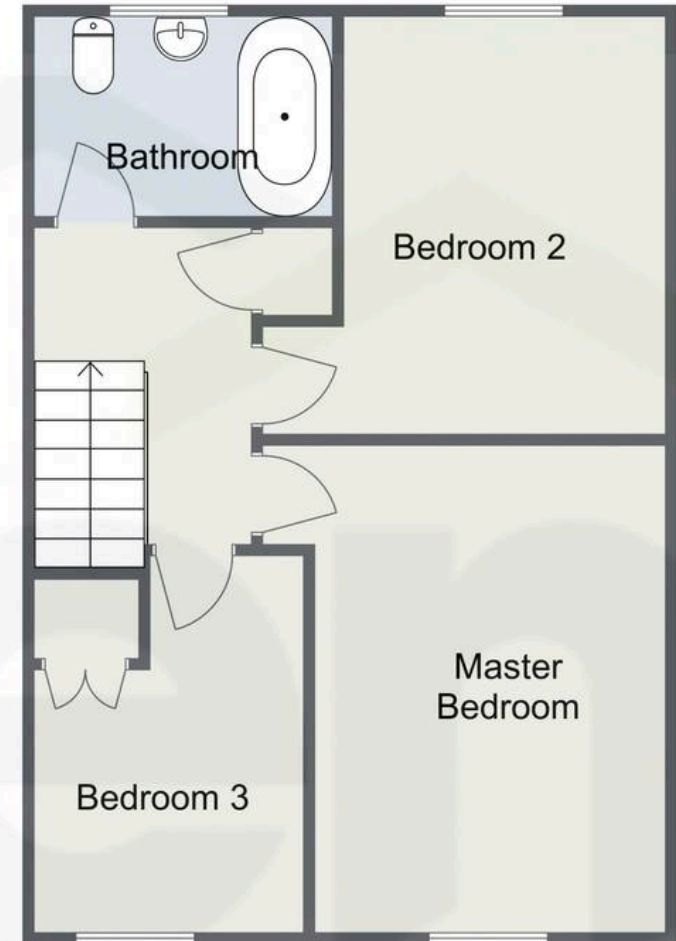


# The Dingle, Cheswick Green

## Ground Floor



## First Floor



Total Area  
Approx  
106.6 sq m  
1147.4 sq ft

For illustrative purposes only. Decorative finishes, fixtures & fittings do not represent the current state of the property. Measurements are approximate & not to scale.  
Floor Plans made using RoomSketcher.





## Arden Estates

450 Stratford Road, Solihull - B90 4AQ

0121 745 5888 • [solihull@ardenestates.co.uk](mailto:solihull@ardenestates.co.uk) •