



High Brow, Rowney Green Lane, Alvechurch

High Brow, Rowney Green Lane

Alvechurch

Nestled behind secure electronic gates in the highly desirable hamlet of Rowney Green, this exceptional family bungalow offers a perfect blend of rural tranquility and modern convenience. Surrounded by scenic countryside walks and benefitting from direct access to Rowney Green Park—with its play area and tennis courts—the property presents immaculate accommodation throughout. Highlights include an impressive open-plan kitchen/diner with adjacent utility, a generous lounge with adjoining office, three well-proportioned bedrooms, each with its own en suite, and a luxury family bathroom. The delightful, sizeable rear garden provides a peaceful retreat, all within easy reach of Alvechurch village amenities and excellent motorway links.

Council Tax band: F

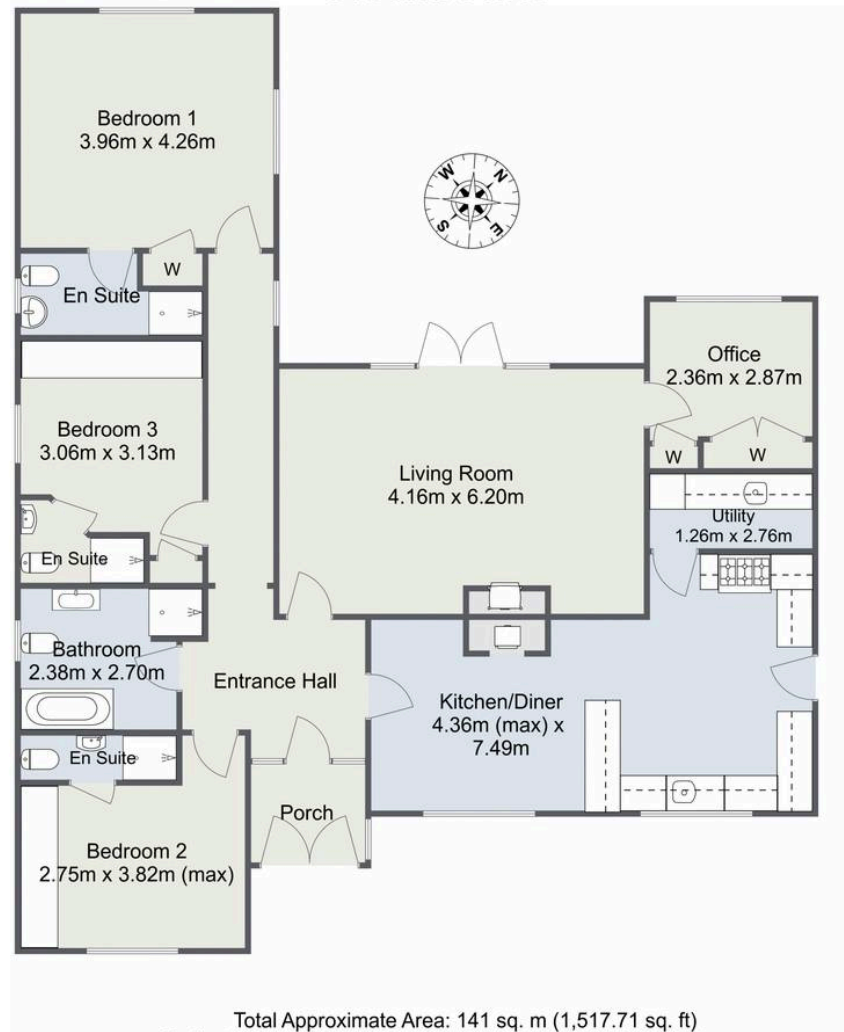
EPC Energy Efficiency Rating: D

- Living Room with Wood Burning Stove
- Office Overlooking the Garden
- High Quality Open Aspect Kitchen/Diner
- Utility Room
- Master Bedroom with Garden Views and En Suite
- Two Additional Bedrooms - Both with En Suites
- Luxury Family Bathroom
- Delightful Rear Garden with Access onto Rowney Green Park
- Front Driveway Set Behind Electronic Gates
- Well Located for Alvechurch Village Amenities and Motorway Links





Rowney Green Lane, Rowney Green Ground Floor



For illustrative purposes only. Decorative finishes, fixtures & fittings do not represent the current state of the property. Measurements are approximate & not to scale.
Floor Plans made using RoomSketcher.

Arden Estates

Arden Estates, 67 Hewell Road – B45 8NL

0121 447 8300 • barntgreen@ardenestates.co.uk •

These particulars are for general guidance only and are based on information supplied and approved by the seller. Complete accuracy cannot be guaranteed and may be subject to errors/omissions. They do not constitute part of a contract in any way. The mention of any fixtures, fittings and/or appliances does not imply that they are included or that they are in working order.