



**102 Maypole Lane, Birmingham**

Birmingham

Offers Over **£250,000**

# 102 Maypole Lane

Birmingham, Birmingham

Offered with No Onward Chain, this 3-bedroom semi-detached property is perfectly situated in a convenient location, close to transport links and local amenities.

Council Tax band: C

Tenure: Freehold

EPC Energy Efficiency Rating: D

EPC Environmental Impact Rating: D

- No onward chain
- Three bedrooms
- Lounge / diner
- Conservatory
- Convenient location
- 880 SQFT



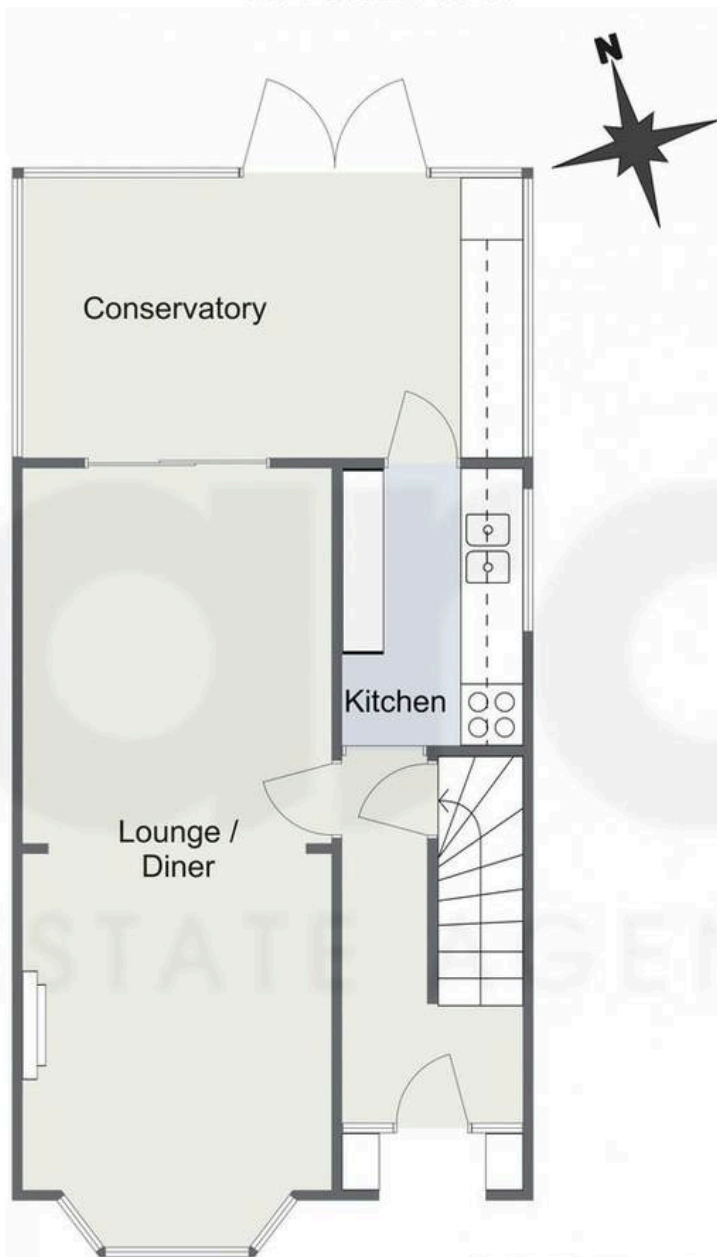


You can include any text here. The text can be modified upon generating your brochure.



# Maypole Lane, Birmingham

## Ground Floor



## First Floor



Total Area Approx  
81.8 Sq M  
880.5 Sq Ft

For illustrative purposes only. Decorative finishes, fixtures & fittings do not represent the current state of the property. Measurements are approximate & not to scale. Floor Plans made using RoomSketcher.



## Arden Estates

450 Stratford Road, Solihull - B90 4AQ

0121 745 5888 • [solihull@ardenestates.co.uk](mailto:solihull@ardenestates.co.uk) •