



102 Newman Way, Rednal

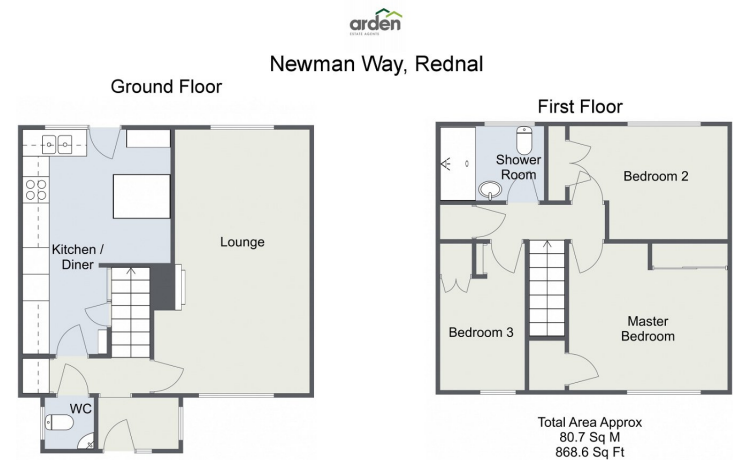
£240,000

3 1 1



- Three Bedrooms
- Kitchen/Diner with Integrated Appliances
- Lounge with Feature Fireplace
- Shower Room
- Downstairs WC
- Porch
- Landscaped Rear Garden
- Off Road Parking





arden
Estate Agents

For illustrative purposes only. Decorative finishes, fixtures & fittings do not represent the current state of the property. Measurements are approximate & not to scale. Floor Plans made using RoomSketcher.

A beautiful, three bedroom, end of terraced property offering an open plan kitchen/diner with integrated appliances, lounge with feature fireplace and off road parking situated in Rednal, Birmingham.

For more information on this house or to arrange a viewing please call the office on:

0121 453 4349

Alternatively, you can scan the QR to view all of the details of this property online.



arden
ESTATE AGENTS