



It's who
you move
with.

The Lane, Worcester, WR1 1AE

Guide Price £330,000

🛏️ 4 🚿 3 🚗 1



A modern townhouse located in the heart of Barbourne, just a short walk from Worcester city centre. This spacious and light-filled home boasts four well-proportioned bedrooms, two bathrooms, and a stylish kitchen/diner, along with a convenient downstairs WC and utility space. High ceilings enhance the airy feel throughout the property. The current owners have thoughtfully converted the loft, creating a main bedroom with a shower room. Viewing is highly recommended to fully appreciate all this home has to offer. Additionally, the vendors are purchasing an end-of-chain property, adding to the desirability of this home.

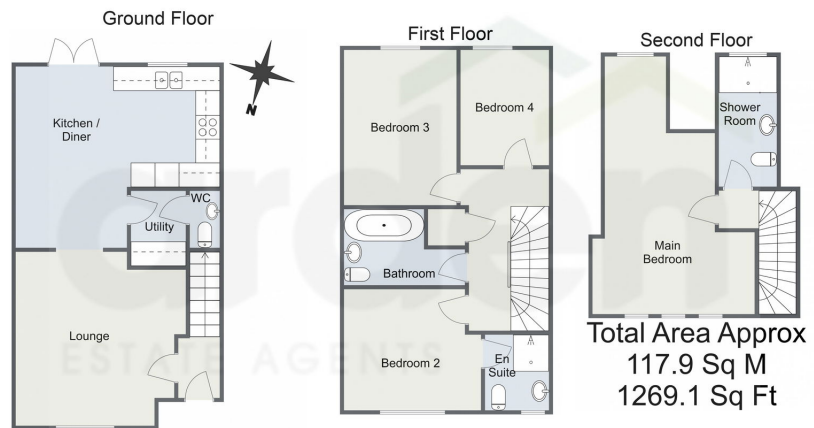
At the front of the property, there are two side-by-side parking spaces for added convenience. Upon entering, the hallway leads into a bright and welcoming lounge, enhanced by its open-plan design and large triple window, allowing plenty of natural light to flow through. The space has been redecorated with stylish Karndean flooring, while upgraded oak internal doors adds to the contemporary feel throughout the home.

Situated between the lounge and dining area, is the utility space and downstairs w/c. The utility offers plumbing for a washing machine, space for a tumble dryer and additional counter top & wall units. The dining area is a great space with patio doors leading to the rear garden and it seamlessly flows into the kitchen. The kitchen provides a range of wall and base units, and built in appliances to include dishwasher, gas hob, electric oven, extractor fan. The integral fridge was swapped out to make a wider space to fit a double fridge freezer. The boiler is also located in the kitchen and was upgraded in December 2023/January 2024 to a combi-boiler, the new boiler was also serviced in January 2025.

The first floor offers three well-proportioned bedrooms, a family bathroom, and an en-suite to bedroom two. The former airing cupboard has been converted into a useful additional storage space following the boiler upgrade. Both bathrooms are finished in neutral tones, with the family bathroom featuring a bath with an overhead shower, a sink, and a wc, while the en-suite includes a shower, sink, and wc. The second floor boasts the bright loft conversion, completed in September 2021. The spacious main bedroom comfortably accommodates a king size bed and benefits from cover

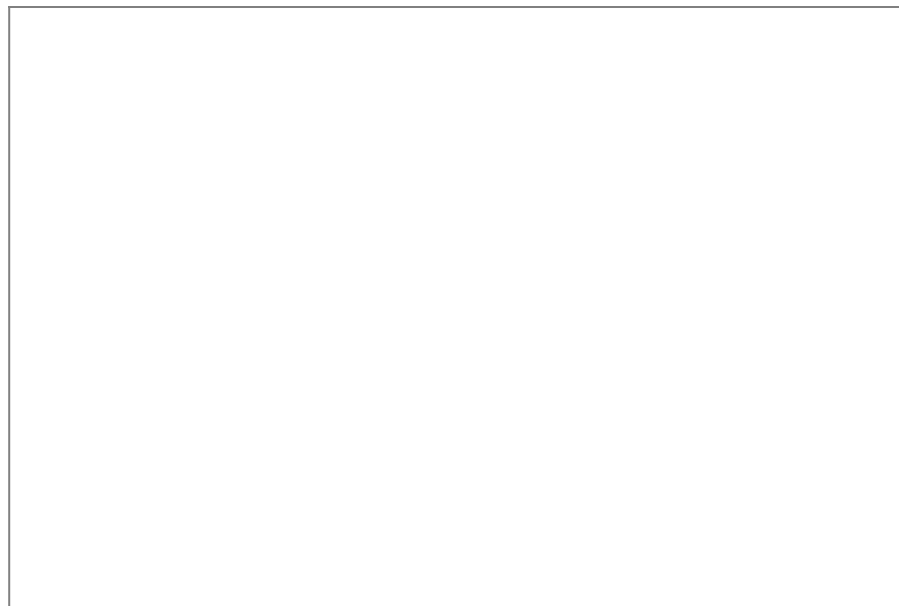


The Lane, Worcester



For illustrative purposes only. Decorative finishes, fixtures & fittings do not represent the current state of the property. Measurements are approximate & not to scale. Floor Plans made using RoomSketcher.

- Modern Townhouse
- Two Parking Spaces
- Popular Barbourne Location
- Utility & Downstairs WC
- Four Bedrooms
- South Facing Garden



For more information on this house or to arrange a viewing please call the office on:

01905 958 290

Alternatively, you can scan the QR to view all of the details of this property online.

