



Cladswell Close, Cookhill, Alcester B49 5JX

£325,000

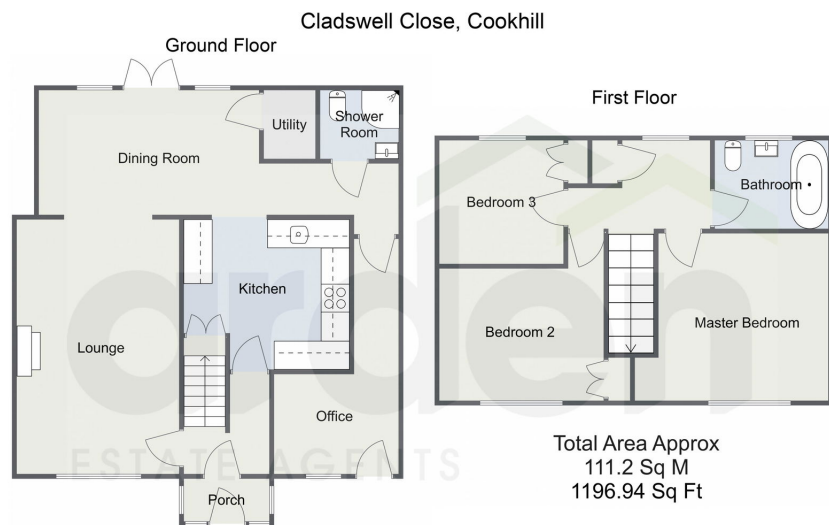
🛏 3 🍳 2 🛋 2



- Beautifully Presented Mid Terrace Property
- Spacious Formal Lounge
- Breakfast Kitchen and Separate Utility
- Bathroom and Ground Floor Shower Room
- Semi-Rural Location
- Three Well-Proportioned Bedrooms
- Open Plan Dining Room
- Useful Office Space
- Attractive Front and Rear Gardens
- Much Improved



A beautifully presented and much improved three bedroom mid-terrace property, situated in the semi-rural Cookhill area, near Astwood Bank and Alcester. The property boasts open plan living with stylish interiors and attractive landscaped front and rear garden.



For illustrative purposes only. Decorative finishes, fixtures & fittings do not represent the current state of the property. Measurements are approximate & not to scale. Floor Plans made using RoomSketcher.

For more information on this house or to arrange a viewing please call the office on:

01527 540 654

Alternatively, you can scan the QR to view all of the details of this property online.



arden
ESTATE AGENTS