



Fernhill Heath, Worcester, WR3 7WD

£250,000

🛏 2 🚿 2 🚿 1



A well maintained, two bedroom end terrace located in the popular Fernhill Heath. Built six years ago, this home has been neutrally decorated and is move in ready. Benefitting from four years remaining NHBC and nestled in a vibrant and well-connected community, this home offers modern comforts and a warm, inviting atmosphere.

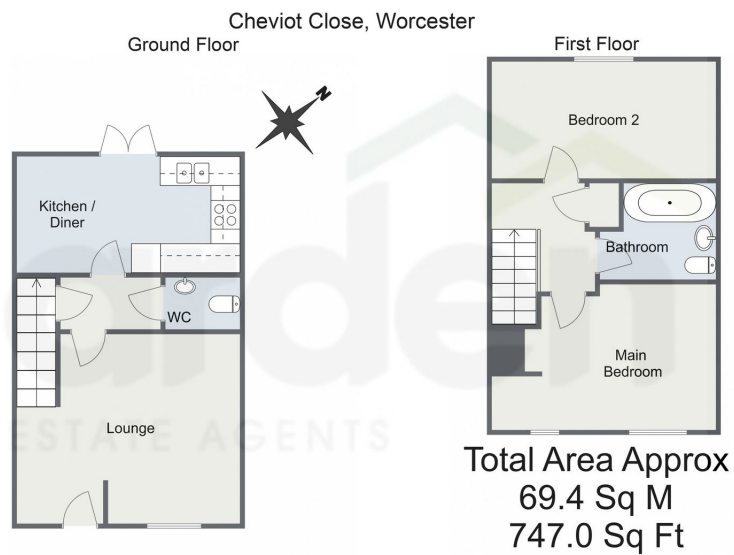
Entering the home, the lounge is tastefully decorated in neutral tones, offering a warm and inviting space ideal for relaxation or entertaining. The sleek white kitchen/diner is both stylish and functional, offering built in appliances with a dishwasher, washer dryer, gas hob and electric oven. There's room for a dining table that seats four, making it ideal for family meals. French doors open directly onto the garden, filling the space with natural light and seamlessly connecting indoor and outdoor living areas.

Upstairs, the property boasts two double bedrooms. The main bedroom benefits from natural light streaming through two windows, creating a bright and spacious atmosphere. The second bedroom offers versatile use as a second room, home office, or family space. The modern family bathroom features a shower over the bath, a basin, and a toilet, and is tiled in neutral tones in keeping with the rest of the property.

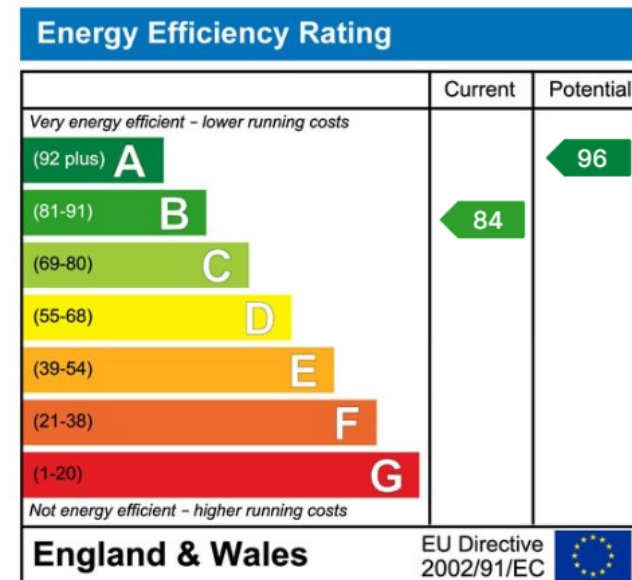
The rear garden is features a patio area perfect for outdoor dining. The rest is laid to lawn with a raised bed at the end of the garden. At the front, there is convenient off-road parking for two cars and side access to the rear of the property.

Location: Nestled in the picturesque area of Fernhill Heath, Worcestershire, this property offers scenic walks right on your doorstep. Perfectly located just three miles north of Worcester and three miles south of Droitwich, Fernhill Heath provides a range of local amenities, including two inviting pubs—The White Hart and The Bull—a sub-post office, three convenient shops, a primary school, and a Baptist church. For commuters, the village is ideally positioned just minutes from the M5, with excellent public transport links and easy access to rail stations in both Worcester and Droitwich. Additionally, the property is close to RGS The Grange and well-equipped fitness centres such as David Lloyd and Nuffield Health





- 4 Years NHBC Warranty
- Well Presented
- Kitchen Diner
- Downstairs WC
- Great for First Buyers
- Popular Fernhill Heath



For more information on this house or to arrange a viewing please call the office on:

01905 958 290

Alternatively, you can scan the QR to view all of the details of this property online.

