

Ash Tree Road, Batchley, Redditch B97 6JT

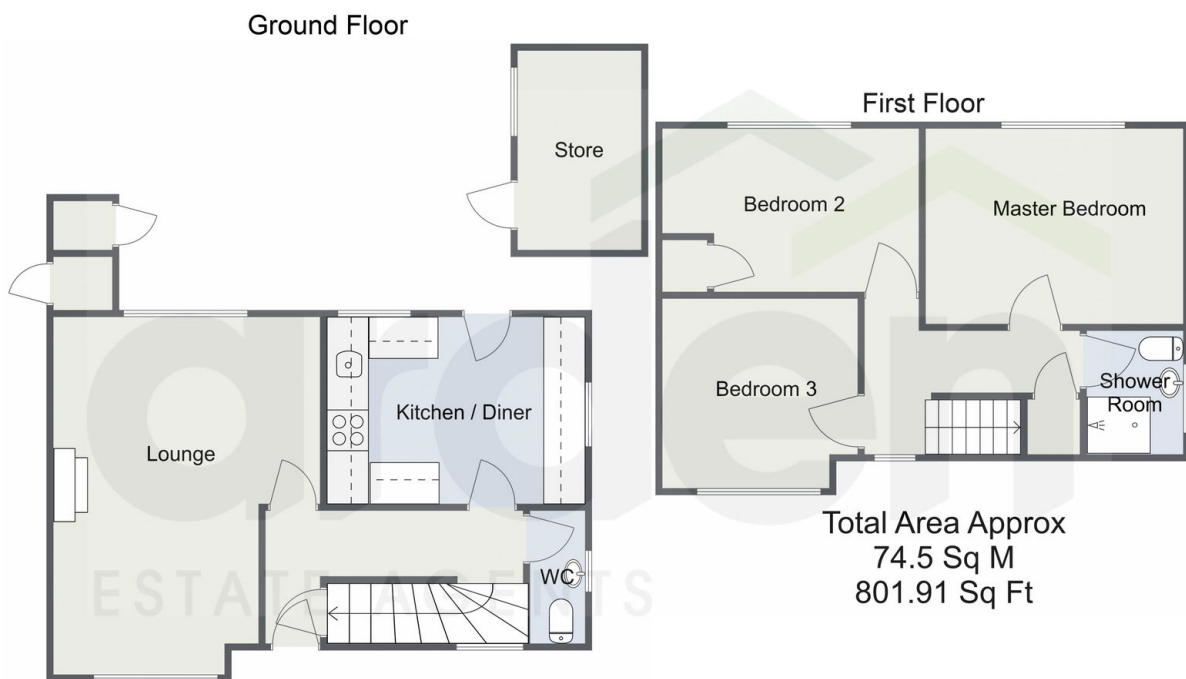
£190,000

3 1 1



- Well-Proportioned Semi-Detached House
- Spacious Dual Aspect Lounge
- Principal Shower Room and Guest WC
- Driveway Parking
- No Upward Chain
- Three Generous Bedrooms
- Breakfast Kitchen
- Generous Rear Garden with Outhouse
- Opportunity for Improvement
- Ideally Located Close to Town Centre

Ashtree Road, Redditch



For illustrative purposes only. Decorative finishes, fixtures & fittings do not represent the current state of the property. Measurements are approximate & not to scale. Floor Plans made using RoomSketcher.

A well-proportioned three-bedroom semi-detached house, offered for sale with no upward chain and ideally located in Batchley. The property presents an excellent opportunity for cosmetic modernisation and benefits from a generously sized rear garden and driveway parking.