



Dearmont Road, Longbridge, Birmingham, B31 4LZ

£260,000

🛏 2 🍳 1 🚿 1



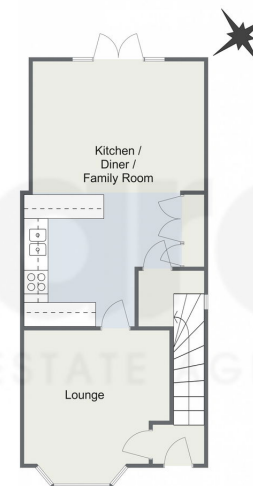
- Two Bedrooms
- Open Plan Kitchen / Diner and Family Room
- Cosy Lounge
- Modern Family Bathroom
- Rear Garden
- Ability to be transformed back into a three bedroom property.
- Vasts amount of storage
- Close to Transport Links





Discover this charming two-bedroom semi-detached home in Longbridge, Birmingham, offering off-road parking and a thoughtfully designed layout. The property boasts a spacious lounge, a stylish open-plan kitchen/diner with an adjoining family room, a contemporary family bathroom, and a generously sized rear garden—perfect for outdoor enjoyment.

Dearmont Road, Birmingham
Ground Floor



First Floor



Total Area Approx
76.5 Sq M
823.4 Sq Ft

For illustrative purposes only. Decorative finishes, fixtures & fittings do not represent the current state of the property. Measurements are approximate & not to scale. Floor plans made using RoomSketcher.

2022, 12:05 PM

Energy performance certificate (EPC) - Find an energy certificate - GOV.UK

Energy performance certificate (EPC)		
11, Dearmont Road BIRMINGHAM B15 4L2	Energy rating E	Valid until: 29 April 2027 Certificate number: 0358-2819-7045-5123-5435
Property type: Semi-detached house		
Total floor area: 64 square metres		
Rules on letting this property		
Properties can be let if they have an energy rating from A to E.		
You can read guidance for landlords on the regulations and exemptions https://www.gov.uk/guidance/domestic-private-rental-property-minimum-energy-efficiency-standard-landlord-guidance		
Energy rating and score		
This property's energy rating is E. It has the potential to be C.		
See how to improve this property's energy efficiency		
The graph shows this property's current and potential energy rating.		
Properties get a rating from A (best) to G (worst) and a score. The better the rating and score, the lower your energy bills are likely to be.		
For properties in England and Wales: the average energy rating is D the average energy score is 60		

<https://find-energy-certificate.service.gov.uk/energy-certificate/0358-2819-7045-5123-5435/print-flow>

1/5

For more information on this house or to arrange a viewing please call the office on:

0121 453 4349

Alternatively, you can scan the QR to view all of the details of this property online.



arden
ESTATE AGENTS