



Stonehouse Close, Headless Cross, Redditch B97 4LF
Offers In Region Of £185,000

2 1 1

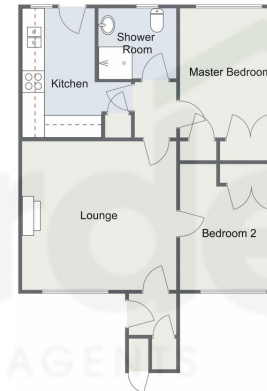


- Bungalow for Over 60's
- Spacious Lounge
- Accessible Wet Room
- Communal Parking and Gardens
- Warden Control
- Two Double Bedrooms with Built-in Wardrobes
- Modern Kitchen
- Private Patio
- No Upward Chain
- Popular Location





Stonehouse Close, Redditch
Ground Floor



Total Area Approx
55.5 Sq M
597.4 Sq Ft

For illustrative purposes only. Decorative finishes, fixtures & fittings do not represent the current state of the property. Measurements are approximate & not to scale. Floor Plans made using RoomSketcher.

A beautifully maintained two-bedroom bungalow, available for sale with no upward chain, for the over 60's. This residence comes with warden control for added support and features communal parking and gardens, situated in the ideal location of Headless Cross, Redditch.

For more information on this house or to arrange a viewing please call the office on:

01527 540 654

Alternatively, you can scan the QR to view all of the details of this property online.

