



Station Road, Fernhill Heath, Worcester, WR3 7UJ

Offers Over £425,000

4 2 1



A versatile and spacious bungalow located in the desirable village of Fernhill Heath, situated on a generous plot. Benefitting from four bedrooms, two bathrooms and an open plan kitchen diner family room, overlooking the rear garden. Designed with comfort and practicality in mind, this property is ideal for families or those looking for single-level living with plenty of space. The property also offers the option to reconfigure if desired.

The heart of the home is the impressive open-plan lounge/kitchen/diner, a bright and welcoming space perfect for entertaining or relaxing with family. The kitchen area provides ample storage and worktop space, while the lounge and dining zones ensure there's room for everyone to gather.

The property features four well-proportioned bedrooms, offering flexibility to meet your needs. The main bedroom boasts an en-suite, adding a touch of privacy. Bedrooms two, three and four provide space for family, guests, or even a home office. A sleek family bathroom serves the remaining bedrooms, ensuring convenience for all. The welcoming reception hall ties the layout together.

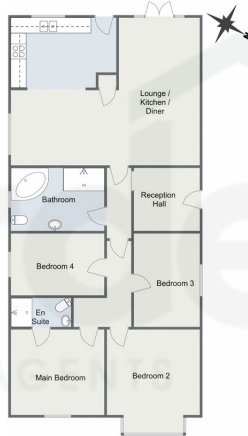
Outside, the patio area offers an excellent space for outdoor dining and entertaining, while the remainder of the garden is beautifully laid to lawn, complemented by a bordered section adding charm and character.

Location: Nestled in the picturesque area of Fernhill Heath, Worcestershire, this property offers scenic walks right on your doorstep. Perfectly located just three miles north of Worcester and three miles south of Droitwich, Fernhill Heath provides a range of local amenities, including two inviting pubs—The White Hart and The Bull—a sub-post office, three convenient shops, a primary school, and a Baptist church. For commuters, the village is ideally positioned just minutes from the M5, with excellent public transport links and easy access to rail stations in both Worcester and Droitwich. Additionally, the property is close to RGS The Grange and well-equipped fitness centres such as David Lloyd and Nuffield Health, ensuring convenience and an excellent quality of life.

Please read the following: These particulars are for general guidance



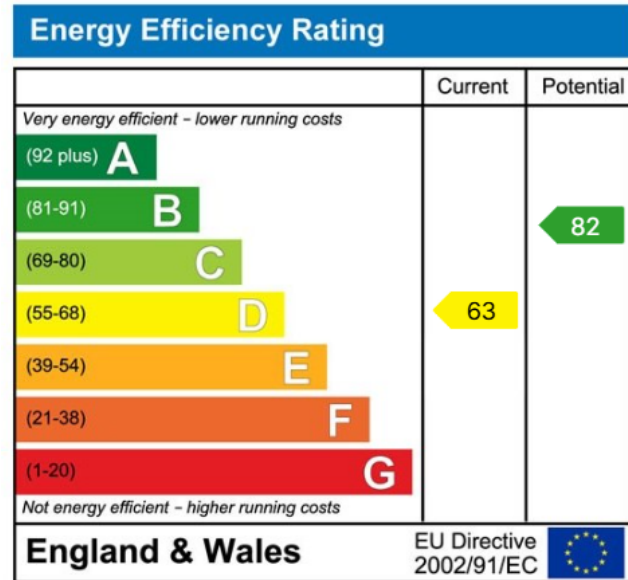
Station Road, Fernhill Heath, Worcester
Ground Floor



Total Area Approx
116.1 Sq M
1249.7 Sq Ft

For illustrative purposes only. Decorative finishes, fixtures & fittings do not represent the current state of the property. Measurements are approximate & not to scale. Floor Plans made using RoomSketcher.

- Large Rear Garden
- Open Plan Living
- Four Bedrooms
- Two Bathrooms
- Fernhill Heath Location
- Modern Finish



For more information on this house or to arrange a viewing please call the office on:

01905 958 290

Alternatively, you can scan the QR to view all of the details of this property online.

