



Epsom Close, Redditch, Headless Cross B97 5FD

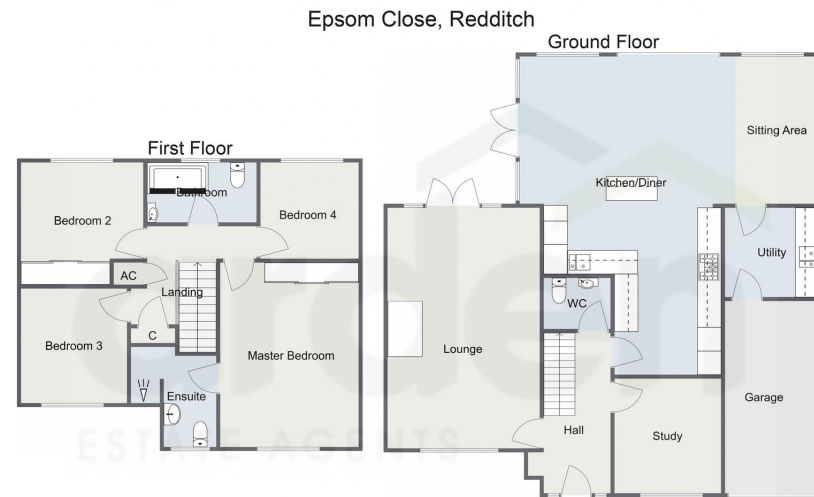
Offers In Region Of £510,000

🛏️ 4 🚿 2 🚗 2



- Beautifully Presented Detached Home
- Dual Aspect Lounge with Log Stove
- Fabulous Open Plan Kitchen, Dining and Family Room
- Attractive Low Maintenance Garden
- Four Well Proportioned Bedrooms
- Spacious Study
- Contemporary Bathroom, En-Suite to Master and Guest WC
- Driveway and Garage

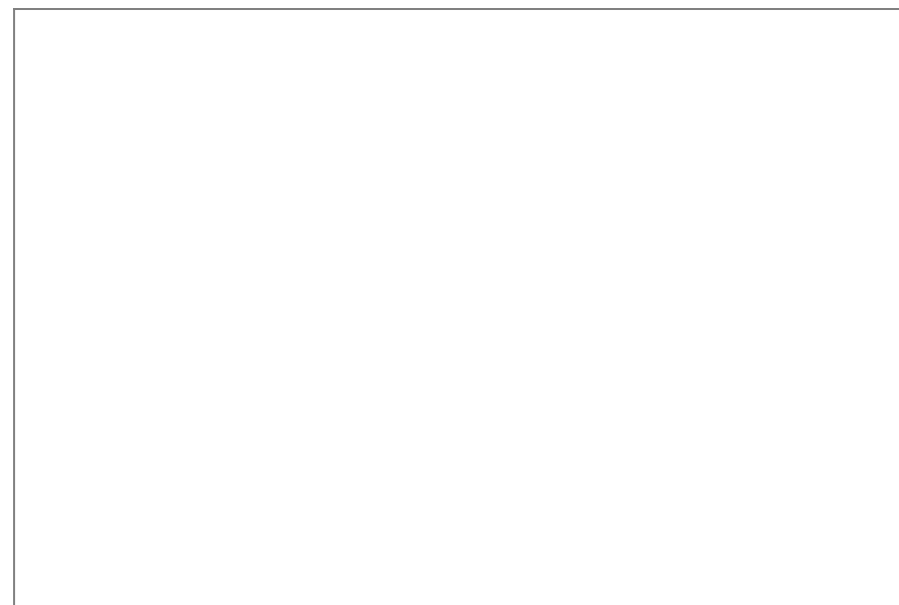




Total Area Approx:
163.1 sq metres (1756 sq ft)

For illustrative purposes only. Decorative finishes, fixtures & fittings do not represent the current state of the property. Measurements are approximate & not to scale. Floor Plans made using RoomSketcher.

A beautifully presented four-bedroom detached home, with a driveway and garage, offering generously proportioned contemporary interiors and a low-maintenance rear garden, situated in the popular suburb of Headless Cross in Redditch.



For more information on this house or to arrange a viewing please call the office on:

01527 540 654

Alternatively, you can scan the QR to view all of the details of this property online.

