

## Oakenshaw Road, Greenlands, Redditch B98 7PA

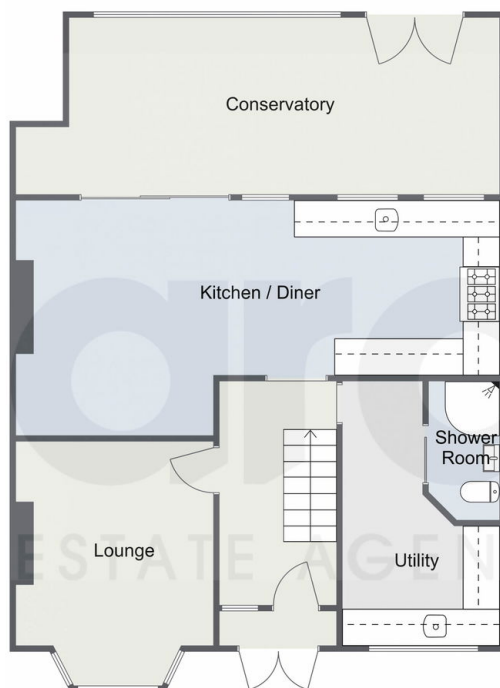
Offers In Region Of £300,000

🛏 3 🚿 2 🚗 2

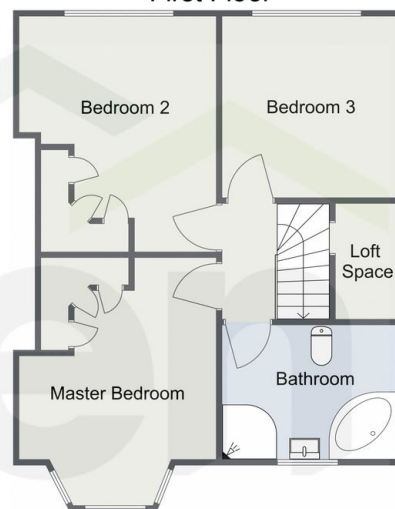


- Beautifully Appointed Semi-Detached House
- Formal Lounge
- Large Conservatory
- Bathroom and Ground Floor Shower Room
- Block Paved Driveway
- Three Double Bedrooms
- Open Plan Kitchen and Dining Room
- Separate Utility
- Generous Rear Garden
- No Upward Chain

Oakenshaw Road, Redditch  
Ground Floor



First Floor



Total Area Approx  
126.7 Sq M  
1363.78 Sq Ft

For illustrative purposes only. Decorative finishes, fixtures & fittings do not represent the current state of the property. Measurements are approximate & not to scale. Floor Plans made using RoomSketcher.

A beautifully appointed three double bedroom semi-detached home, being sold with no upward chain, ideally situated within walking distance to Arrow Valley Lake, in Greenlands. The property offers spacious accommodation with stylish modern décor, a generous rear garden and ample block-paved driveway.