



Austin House 25, School Close, Northfield, Birmingham, B31 2SH

£160,000

🛏️ 2 🪑 1 🚗 1



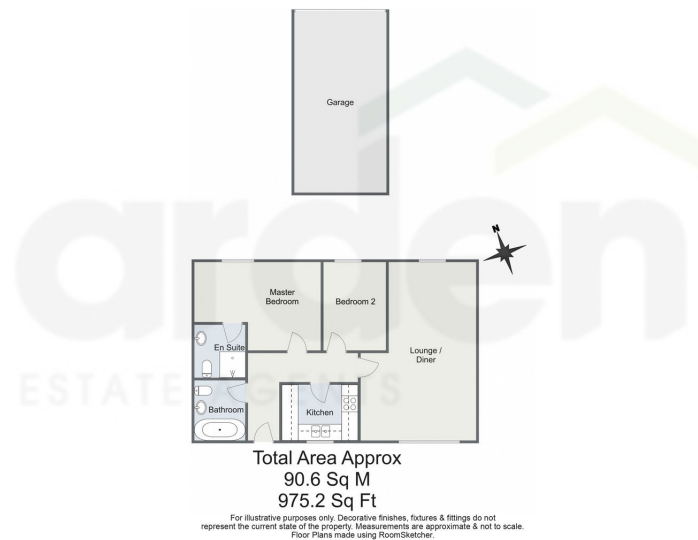
- Two Bedrooms
- Kitchen with Integrated Appliances
- En-Suite Shower Room to Master Bedroom
- Secured Gated Entrance to Allocated Parking and Garage
- Spacious Lounge / Diner
- Family Bathroom
- First Floor Apartment
- Entrance Hall





Introducing this charming two-bedroom, first-floor apartment located in the highly sought-after area of Northfield, Birmingham. This home boasts a spacious lounge and dining area, a well-appointed kitchen, a family bathroom, and the convenience of allocated parking and a private garage.

Austin House, School Close, Birmingham



12225, 10:18 AM Energy performance certificate (EPC) - Find an energy certificate - GOV.UK

Energy performance certificate (EPC)

Apartment 4 Austin House 25 School Close Birmingham B37 2SN	Energy rating B	Valid until 17 May 2031
Property type Mid-floor flat	Total floor area 67 square metres	Certificate number 2439-0125-1000-0028-2292

Rules on letting this property

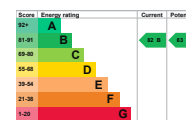
Properties can be let if they have an energy rating from A to E.

You can read [guidance for landlords on the regulations and exemptions](https://www.gov.uk/guidance/landlords-on-the-requirements-and-exemptions) (<https://www.gov.uk/guidance/landlords-on-the-requirements-and-exemptions>).

Energy rating and score

This property's energy rating is B. It has the potential to be B.

[See how to improve this property's energy efficiency.](#)



The graph shows this property's current and potential energy rating.

Properties get a rating from A (best) to G (worst) and a score. The better the rating and score, the lower your energy bills are likely to be.

For properties in England and Wales:
the average energy rating is D
the average energy score is 60

<https://find-energy-certificate.service.gov.uk/energy-certificates/2439-0125-1000-0028-2292?entry=true>

14

For more information on this house or to arrange a viewing please call the office on:

0121 453 4349

Alternatively, you can scan the QR to view all of the details of this property online.

