

Mulberry House, Inkberrow, WR7 4FG

Offers In Region Of £770,000

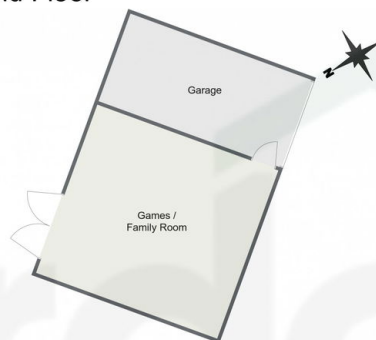
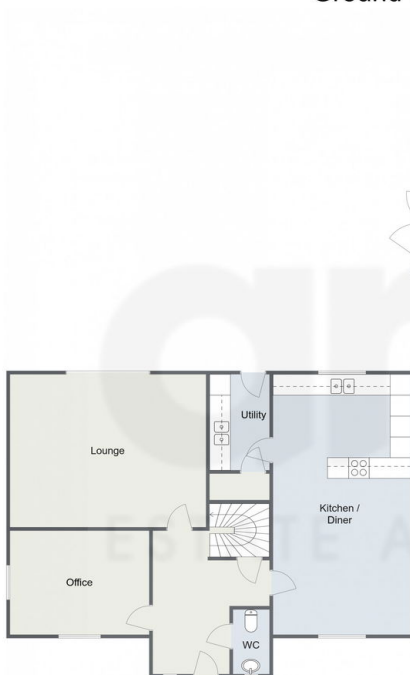
🛏 5 🚿 3 🚗 2



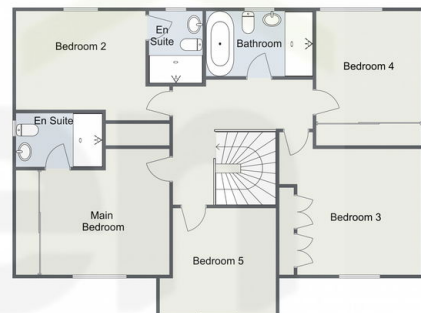
- Executive Double-Fronted Detached Home
- Spacious Lounge with Log Burner and Bi-Folding Doors
- Bathroom, 2x En-Suites and Guest WC
- Ample Driveway Parking
- Occupying a Large Corner Plot, Countryside Views
- Five Well-Proportioned Bedrooms
- Modern Kitchen/ Diner and Separate Utility
- Beautifully Lanscaped Wrap-Around Gardens
- Detached Triple Garage with Games Room
- Sought After Village Location

Ross Crescent, Inkberrow, Worcester

Ground Floor



First Floor



Total Area Approx
226.5 Sq M
2438.0 Sq Ft

For illustrative purposes only. Decorative finishes, fixtures & fittings do not represent the current state of the property. Measurements are approximate & not to scale. Floor Plans made using RoomSketcher.

A stunning and contemporary double-fronted five-bedroom executive detached home, occupying a generous corner plot in the sought-after village of Inkberrow, enjoying unrestricted views of the surrounding countryside and the Malvern Hills. This property showcases spacious living with stylish interiors, beautifully landscaped wrap-around gardens, ample driveway parking, and a detached triple garage with versatile games room.