

Devonport Close, Brockhill, Redditch B97 6TQ

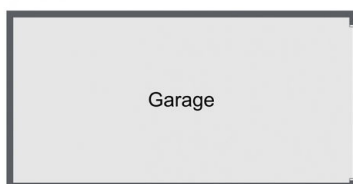
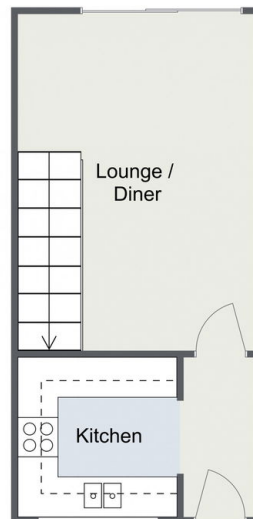
Offers In Region Of £200,000

🛏 2 🚿 1 🚗 1

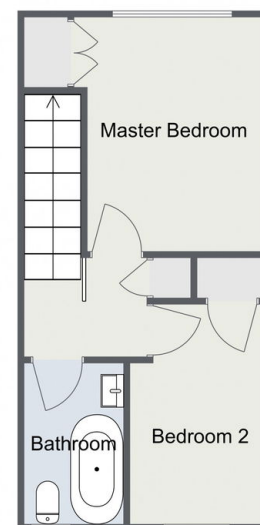


- Neatly Maintained Mid-Terrace House
- Spacious Lounge
- Low Maintenance Rear Garden
- No Upward Chain
- Two Bedrooms
- Fitted Kitchen
- Garage and Parking
- Popular Location

Devonport Close, Redditch
Ground Floor



First Floor



Total Area Approx
54.7 Sq M
588.78 Sq Ft
(Not including garage)

For illustrative purposes only. Decorative finishes, fixtures & fittings do not represent the current state of the property. Measurements are approximate & not to scale. Floor Plans made using RoomSketcher.

A neatly maintained two bedroom mid-terrace property, being sold with no upward chain, situated in the popular Brockhill area. The property benefits from having a garage and off road parking to the front.