



Eastbank Drive, Worcester, WR3 7EW

£170,000

🛏️ 1 🚿 1 🚿 1



We are delighted to present this spacious one-bedroom apartment located in the sought-after area of Northwick, within the prestigious Eastbank Court development.

This secure, gated retirement and assisted living complex is known for its vibrant community and offers an array of weekly social activities, including coffee mornings and afternoons, games afternoons, bingo and quiz nights. Residents enjoy access to exceptional facilities, including a cosy lounge, beautifully maintained communal gardens, a licensed bar, an on-site restaurant, a salon, a library and 24/7 on-site management to ensure comfort and peace of mind.

Access is gained via a communal entrance which leads to your front door.

The apartment features a spacious hallway, a combined lounge and dining area, a well-appointed kitchen which is equipped with ample storage, an integrated fridge-freezer and a built-in oven, making it both functional and stylish. The lounge features elegant French doors that open onto your own private patio offering a seamless blend of indoor and outdoor living. In the bedroom, the space is well thought out with the benefit of built in storage. Moving across the hallway to the bathroom, featuring a walk-in shower, a bath alongside a toilet and basin.

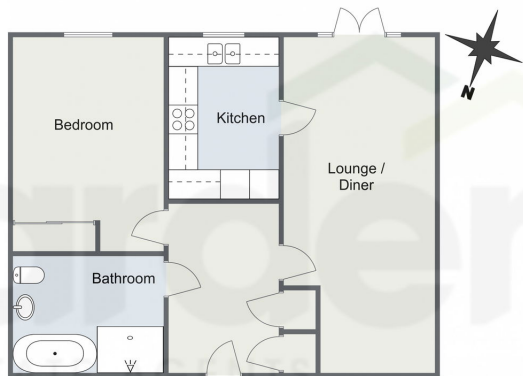
Agent's Note: We have been made aware the property is Leasehold. The Service Charge is approx. £7,680 per year and Ground Rent is £240 per year. There is approximately 112 years remaining on the lease and there is a reserve fund in place for the managed areas of this property. All of this information would need to be confirmed by your solicitor.

Services:

- 24/7 Duty Manager: Available on-site around the clock.
- Emergency Callouts: Service available between 10:30 PM and 7:30 AM.
- Weekly Service Time: One and a half hours provided per week.
- Dining Facilities: Restaurant offering a variety of lunches daily,



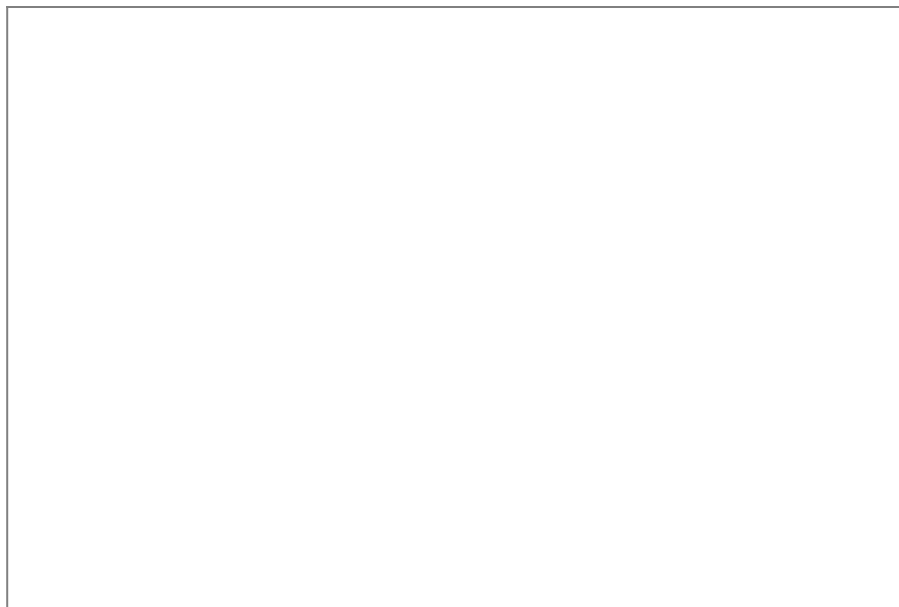
Eastbank Court, Worcester



Total Area Approx
59.8 Sq M
643.7 Sq Ft

For illustrative purposes only. Decorative finishes, fixtures & fittings do not represent the current state of the property. Measurements are approximate & not to scale. Floor Plans made using RoomSketcher.

- Popular WR3 Location
- Ground Floor Apartment
- No Onward Chain
- Private Patio
- Social Activities
- One Bedroom Apartment



For more information on this house or to arrange a viewing please call the office on:

01905 958 290

Alternatively, you can scan the QR to view all of the details of this property online.



arden
ESTATE AGENTS