

Kingsley Avenue, Lakeside, Redditch B98 8PL

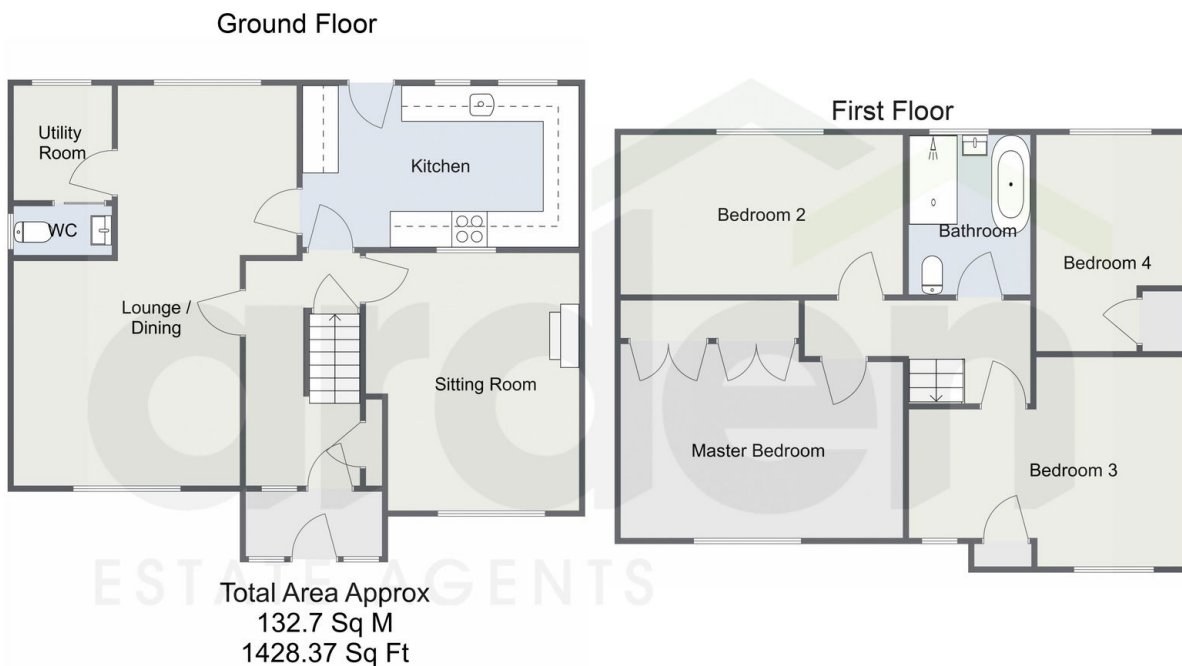
£250,000

🛏️ 4 🚿 1 🚗 2



- Extended Sem-Detached House
- Four Well-Proportioned Bedrooms
- Sitting Room
- Open Plan Lounge and Dining Room
- Modern Bathroom
- Utility
- Bathroom and Guest WC
- Good-Sized Rear Garden
- Off Road Parking
- No Upward Chain

Kingsley Avenue, Redditch



For illustrative purposes only. Decorative finishes, fixtures & fittings do not represent the current state of the property. Measurements are approximate & not to scale. Floor Plans made using RoomSketcher.

A deceptively spacious extended four-bedroom semi-detached house in Lakeside, offered with no upward chain. This property offers generous living spaces that would benefit from some cosmetic updating, a good-sized rear garden, and off-road parking.