



All Saints Place

BROMSGROVE

£250,000



Three Bedroom Mid-Terraced House

Features.

- THREE BEDROOMS
- EN SUITE, MAIN BATHROOM AND DOWNSTAIRS WC
- LOUNGE
- KITCHEN/DINER WITH INTEGRATED APPLIANCES
- SUNNY REAR GARDEN
- DRIVEWAY
- NEAR TO BROMSGROVE TOWN CENTRE

Description.

A well presented three bedroom mid-terraced house, offered with a lounge, kitchen/diner, en suite to the master bedroom, sunny rear garden and off road parking, situated near to Bromsgrove town centre.

The property is approached via a driveway providing off road parking. Once inside, the hall leads to; a downstairs wc; lounge; and kitchen/diner with French doors to the rear garden and integrated appliances including a fridge/freezer, oven, gas hob and extractor.

Stairs from the lounge lead up to the first floor landing with a handy storage cupboard, airing cupboard and doors radiating off to; the master bedroom with an en suite shower room; double bedroom two; bedroom three; and the bathroom with a shower over the bath.

Outside, the property enjoys a rear garden with a paved patio and lawn with a sunny garden shed and planted borders to fenced boundaries.

The property is conveniently located within particularly easy distance from the town centre offering a new leisure centre, a David Lloyd Gym, Bromsgrove Golf Course and a range of eateries, supermarkets as well as doctors, dentists, Health Centre and professional services. In addition, there are first, middle, and high schools, including the prestigious Bromsgrove School. Bromsgrove also provides easy access to the national motorway network and commuting to the West Midlands conurbation (from M5 and M42 junctions).



Room Dimensions:

Hall

Downstairs WC

Lounge: 16' 2" x 14' 3" (4.95m x 4.35m) max

Kitchen/Diner: 16' 2" x 10' 7" (4.95m x 3.23m)

Stairs To First Floor Landing

Master Bedroom: 9' 9" x 9' 3" (2.98m x 2.82m)

En Suite: 7' 0" x 4' 11" (2.15m x 1.50m) max

Bedroom Two: 9' 9" x 8' 5" (2.98m x 2.58m)

Bedroom Three: 9' 4" x 7' 2" (2.85m x 2.20m) max

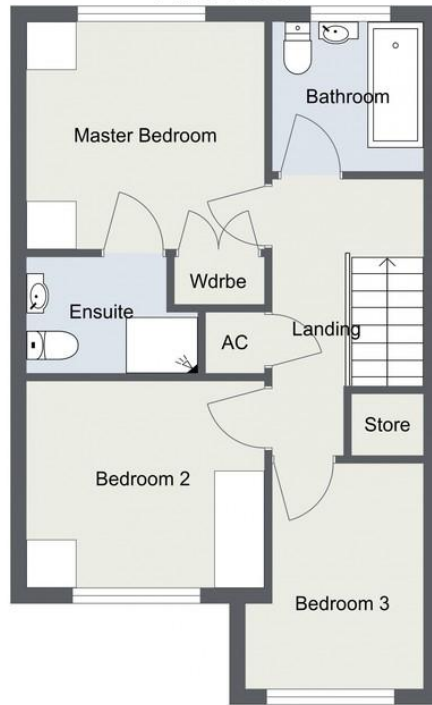
Bathroom: 6' 2" x 6' 2" (1.90m x 1.88m)



All Saints Place, Bromsgrove

Ground Floor

First Floor



Total Area Approx:
74.1 sq metres (798 sq ft)

For illustrative purposes only. Decorative finishes, fixtures & fittings do not represent the current state of the property. Measurements are approximate & not to scale. Floor Plans made using RoomSketcher.

EPC: B

COUNCIL TAX BAND: C

TENURE: Freehold

.....
For more information on this house or to arrange a viewing please call the Bromsgrove office on:

01527 872 479

.....
Alternatively, you can scan below to view all of the details of this property online.



Please read the following: These particulars are for general guidance only and are based on information supplied and approved by the seller. Complete accuracy cannot be guaranteed and may be subject to errors and/or omissions. They do not constitute a contract or part of a contract in any way. We are not surveyors or conveyancing experts therefore we cannot and do not comment on the condition, issues relating to title or other legal issues that may affect this property. Interested parties should employ their own professionals to make enquiries before carrying out any transactional decisions. Photographs are provided for illustrative purposes only and the items shown in these are not necessarily included in the sale, unless specifically stated. The mention of any fixtures, fittings and/or appliances does not imply that they are in full efficient working order and they have not been tested. All dimensions are approximate. We are not liable for any loss arising from the use of these details.

.....
14 Old Birmingham Road
Lickey End
Bromsgrove
B60 1DE