



Bilbury Close, Walkwood, Redditch B97 5XN

Offers Over £300,000

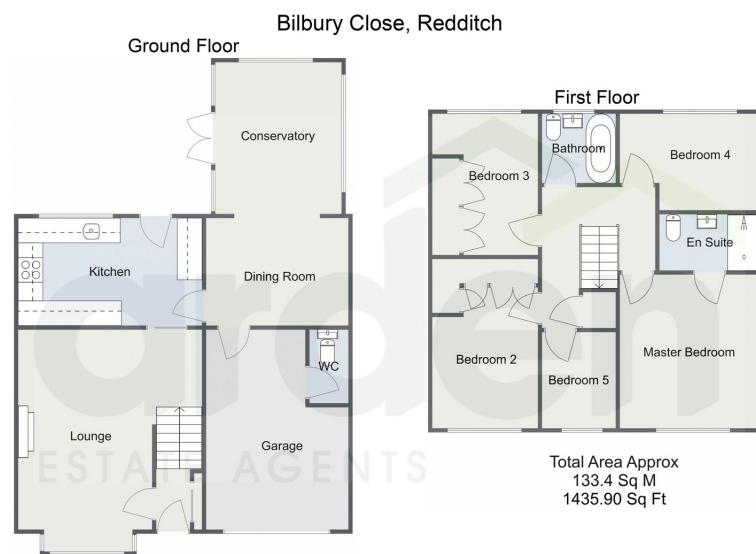
🛏️ 5 🚿 2 🚗 3



- Extended Semi-Detached House
- Two Reception Rooms and Conservatory
- Bathroom, En-Suite and Downstairs WC
- Ample Off Road Parking
- Five Well Proportioned Bedrooms
- Modern Kitchen
- Private Aspect Rear Garden
- Integral Garage



An extended and beautifully presented five bedroom semi-detached house, situated in Walkwood. The property offers generously-proportioned accommodation, a private rear garden, ample driveway parking and integral garage.



For illustrative purposes only. Decorative finishes, fixtures & fittings do not represent the current state of the property. Measurements are approximate & not to scale. Floor Plans made using RoomSketcher.

For more information on this house or to arrange a viewing please call the office on:

01527 540 654

Alternatively, you can scan the QR to view all of the details of this property online.

