



Gilbertstone Close, Southcrest, Redditch B98 7NQ

Offers In Region Of £450,000

🛏️ 4 🚿 2 🚗 2



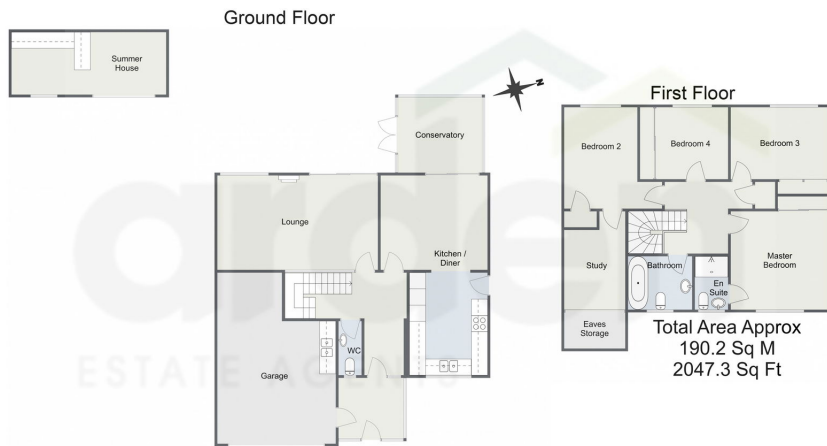
- Wonderfully Situated Detached Home
- Four Well-Proportioned Bedrooms
- Separate Study
- Spacious Lounge
- Open Plan Kitchen and Dining Room
- Conservatory
- Bathroom, En-Suite and Guest WC
- Attractive Landscaped Garden
- Driveway Parking and Double Garage
- Sought After Position



A wonderfully situated four bedroom detached family home, situated in a sought after location in Southcrest. The property offers generously proportioned and beautifully presented accommodation, an attractive landscaped rear garden with summerhouse, driveway parking and an integral double garage.



Gilbertstone Close, Redditch



For illustrative purposes only. Decorative finishes, fixtures & fittings do not represent the current state of the property. Measurements are approximate & not to scale. Floor Plans made using RoomSketcher.

For more information on this house or to arrange a viewing please call the office on:

01527 540 654

Alternatively, you can scan the QR to view all of the details of this property online.

