



It's who
you move
with.

Purshall Close, Southcrest, Redditch B97 4PD

Offers In Region Of £575,000

🛏️ 4 🚿 3 🚺 3



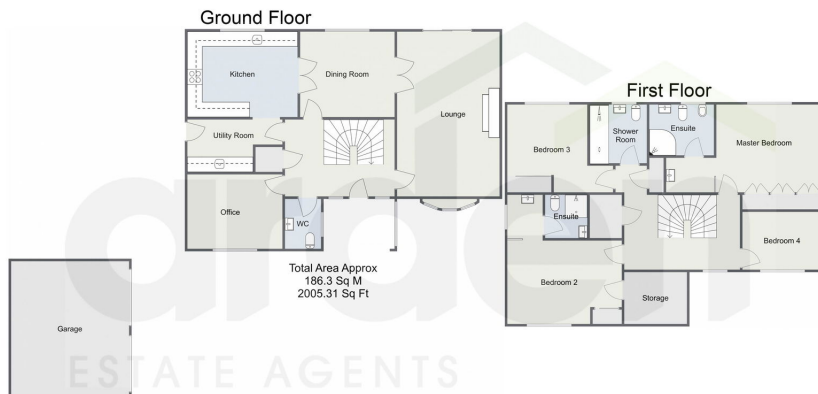
- Wonderfully Appointed Detached Home
- Two Reception Rooms and Office
- Bathroom, 2x En-Suites and Guest WC
- Well-Established Private Rear Garden
- Private Position Surrounded By Woodland
- Four Well-Proportioned Bedrooms
- Breakfast Kitchen and Separate Utility
- Beautifully Maintained
- Driveway Parking and Detached Double Garage
- Sought After Position



A wonderfully appointed four bedroom detached home, occupying a generous plot, situated in a sought after close in Southcrest, surrounded by the local woodland. The property boasts beautifully maintained and generously proportioned accommodation, a large wrap around private garden, driveway parking and a detached double garage.



Purshall Close, Redditch



For illustrative purposes only. Decorative finishes, fixtures & fittings do not represent the current state of the property. Measurements are approximate & not to scale. Floor Plans made using RoomSketcher.

For more information on this house or to arrange a viewing please call the office on:

01527 540 654

Alternatively, you can scan the QR to view all of the details of this property online.

