




ESTATE AGENTS

It's who
you move
with.

Rainbow Hill, Worcester, WR3 8NA

£275,000

🛏️ 2 🚿 1 🛋️ 2



A remarkable renovation has gone underway to create a stylish home on the edge of the city, with access to secure parking. Sympathetically restored and tastefully designed to bring a modern edge to a Victorian home. This property provides views of the Cathedral and the Malvern Hills, whilst being tucked away from the hustle and bustle of city life. Perfect for those who appreciate an artistic touch, the home offers two reception rooms and two double bedrooms, full of natural light and distinctive charm.

To the front of the property, a gorgeous landscaped garden welcomes you. With a variety of mature border plants and trees, this is a tranquil outlook from the living room. The checkerboard tiles are the first hint of the Victorian charm. As you step through the entrance, you'll find an inviting studio space, ideal for creative pursuits, a home office, or an additional living area. With its large bay window, it's a bright and flexible area that sets the tone for the rest of the property. Adjacent to the studio, the lounge provides a homely setting with a log burner and exposed brick fireplace.

The bespoke kitchen has been individually designed to offer an industrial style finish. The kitchen offers a Belfast sink, induction hob, range style oven and a dishwasher. Seamlessly leading on from the kitchen, the utility area provides convenience without compromising on style. The exposed brick is in keeping with the rest of the property and the utility provides additional storage, fridge-freezer and laundry facilities.

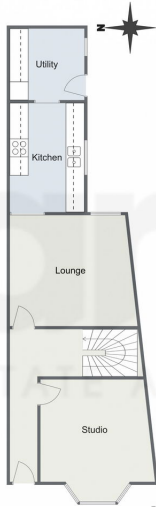
Upstairs, you'll find the master bedroom with high ceilings, abundant light, and an airy feel. Perfect for unwinding, this room combines comfort with the house's signature artistic flair. An equally charming second bedroom with a welcoming ambiance. The contemporary bathroom features a separate bath, freestanding waterfall shower, sink and w/c.

Outside, the rear garden is laid to patio for easy maintenance and perfect for enjoying warmer days. For parking, the vendors have a parking permit for Freemason Lodge, which is transferrable to the next owner.

With thoughtful updates and vintage-meets-industrial details, the



Crescent Villas, Rainbow Hill, Worcester
Ground Floor



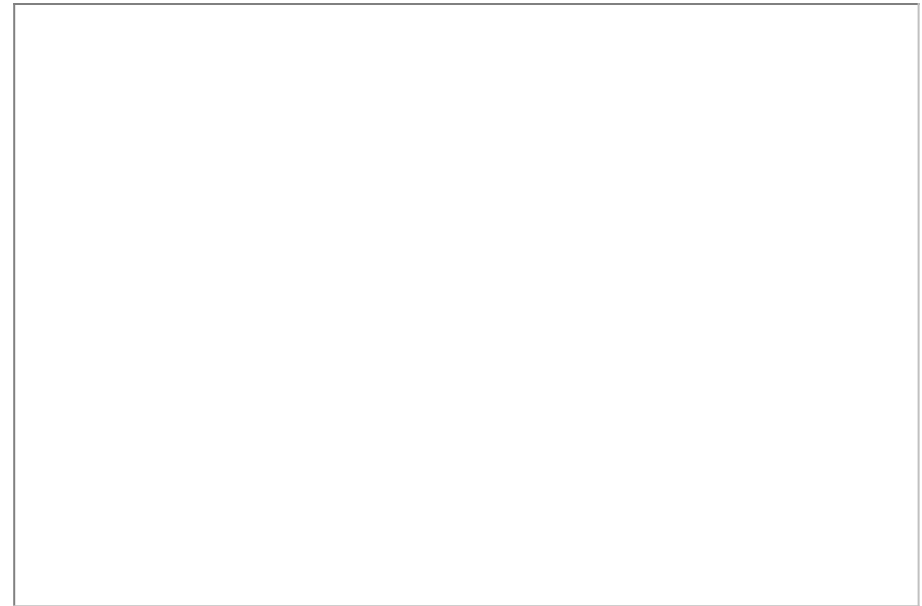
First Floor



Total Area Approx
99.6 Sq M
1072.1 Sq Ft

For illustrative purposes only. Decorative finishes, fixtures & fittings do not represent the current state of the property. Measurements are approximate & not to scale. Floor Plans made using RoomSketcher.

- Fully Renovated
- Rewired Throughout
- Log Burner
- Utility
- Front & Rear Gardens
- Secure Parking
- Tucked Away Location
- Two Double Bedrooms



For more information on this house or to arrange a viewing please call the office on:

01905 958 290

Alternatively, you can scan the QR to view all of the details of this property online.

