





# Chapel Road, Kempsey, Worcester, WR5 3JT

Offers Over £270,000

3 2 2





Located in the charming area of Kempsey, Worcester, this three-bedroom home on Chapel Road offers a fantastic opportunity for modernisation, allowing you to transform its classic layout into a contemporary home.

To the front of the property is the lounge, ideal for family gatherings or a cozy retreat. Adjacent to the lounge, the dining room provides a space for entertaining guests and could be reimagined as part of an open-plan layout. The kitchen, positioned for convenient access, is ready for customisation to suit your taste and could become the heart of the home. To the rear of the property, a large conservatory floods the space with natural light and offers relaxing garden views, perfect as a relaxation spot. The ground floor also includes a practical shower room, along with an integral garage that serves as additional storage.

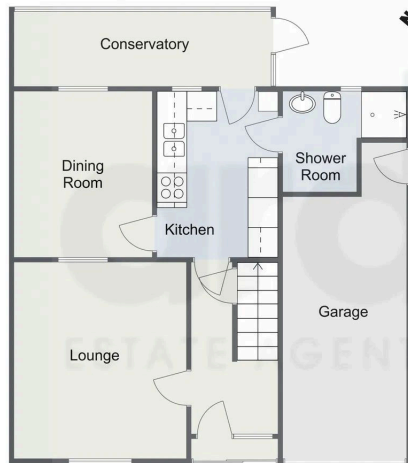
Upstairs, the first floor features a main bedroom, with a built in wardrobe for additional storage whilst two additional bedrooms provide flexible options. Completing the first floor is the family bathroom, featuring a corner bath, shower cubicle, toilet and sink.

This property is ideal for buyers looking to add their personal touch, with endless potential for customisation and modernisation throughout. With a versatile layout, there's room to create an open-plan ground floor or to enhance each room with modern finishes, depending on your vision. Situated in the picturesque Kempsey area, Chapel Road offers the charm of countryside living while being close to essential amenities and schools, making it a perfect blend of tranquillity and convenience.

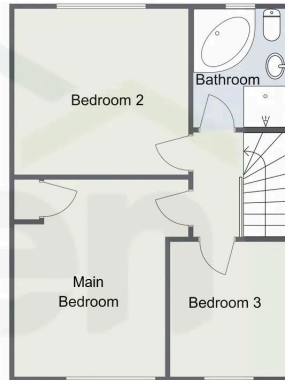
**Location:** Kempsey, located just south of Worcester, is a charming and sought-after village that combines rural beauty with modern conveniences, known for its friendly community atmosphere. Kempsey offers a peaceful lifestyle while being just a short drive from Worcester city centre and the property is a stone's throw away from Kempsey Common. The village boasts excellent local amenities, including Kempsey primary school, village hall, pubs, and shops, making it ideal for families. Other schools nearby are Littleworth & Red Hill Primary. There is also a school bus from Kempsey to Hanley High School & Kings High School, as well as RGS



Chapel Road, Kempsey, Worcester  
Ground Floor



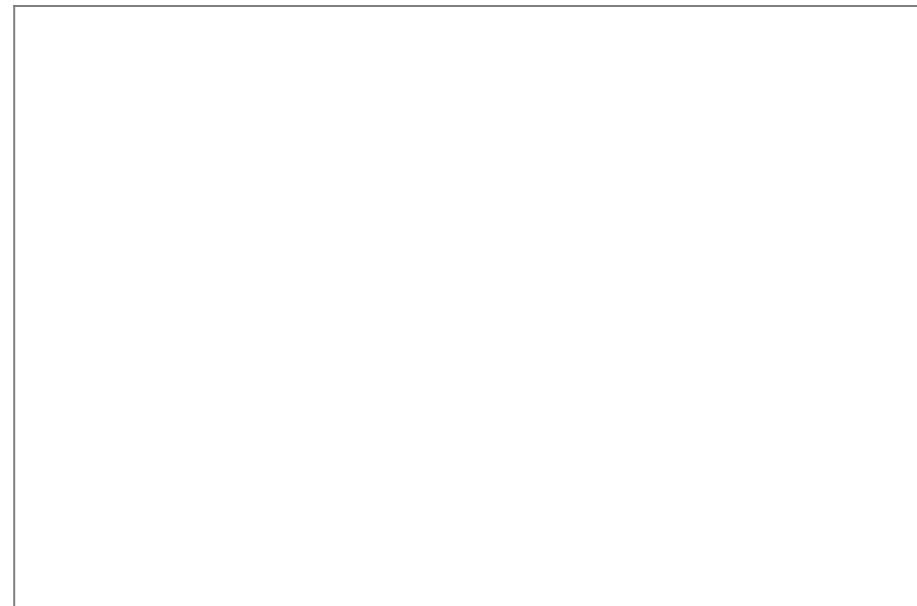
First Floor



Total Area Approx  
107.3 Sq M  
1155.0 Sq Ft

For illustrative purposes only. Decorative finishes, fixtures & fittings do not represent the current state of the property. Measurements are approximate & not to scale. Floor Plans made using RoomSketcher.

- Perfect for First Time Buyers or Downsizers
- Two Reception Rooms
- Conservatory
- Popular Kempsey Location
- Downstairs Shower Room
- Mature Garden



For more information on this house or to arrange a viewing please call the office on:

**01905 958 290**

Alternatively, you can scan the QR to view all of the details of this property online.

