

Malvern Road, Headless Cross, Redditch B97 5DP

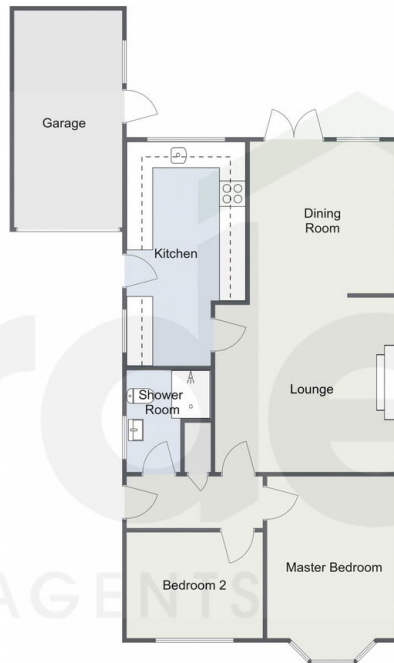
Offers Over £290,000

🛏 2 🚿 1 🚗 2



- Beautifully Presented Semi-Detached Bungalow
- Spacious Lounge and Open Plan Dining Room
- Modern Shower Room
- Driveway Parking
- Two Double Bedrooms
- Modern Kitchen
- Attractive Rear Garden
- Single Garage

Malvern Road, Redditch
Ground Floor



Total Area Approx
71.3 Sq M
767.47 Sq Ft

For illustrative purposes only. Decorative finishes, fixtures & fittings do not represent the current state of the property. Measurements are approximate & not to scale. Floor Plans made using RoomSketcher.

A beautifully presented two-double-bedroom bungalow located in the highly sought-after Headless Cross area. This property features modern, well-proportioned accommodation, an attractive rear garden, driveway parking, and a single garage.